

**BUKTI KORESPONDENSI ARTIKEL PADA
JURNAL INTERNASIONAL BEREPUTASI**



Pengusul:

Dr. Yeri Sutopo, M.T./NIDN: 0030076310

UNIVERSITAS NEGERI SEMARANG

Mei, 2022

Semarang, 27 Mei 2022

Kepada Yth.

Penilaian Usulan PAK

Ass. Wr. Wb.

Dengan hormat

Bersama surat ini kami sampaikan proses submit sampai dengan *publish* Karya Tulis Ilmiah saya ke CEJ Iran. Korespondensi yang pertama dengan Prof. M. R. Kavianpour pada tanggal 27 November 2021. Komunikasi dan korespondensi dilanjutkan dengan office C.E.J sampai dengan terbit. Demikian keterangan ini saya susun dengan sejujur-jujurnya.

Di samping itu, saya bermaksud menyertakan bukti bukti korespondensi proses artikel pada Jurnal Internasional dengan judul “The Effects of Spillway Width on Outflow Discharge and Flow Elevation for the Probable Maximum Flood (PMF)”, yang dimuat pada Civil Engineering Journal, edisi Vol 8, No 4 (2022), ISSN (p): 2676-6957, ISSN (e) : 2476-3055, hal : 723-733. Demikian pengantar ini saya sampaikan, agar dapat menjadi periksa. Terima kasih.

Hormat saya,



Dr. Yeri Sutopo, M.T.

Di bawah ini, saya sajikan susunan kronologi bukti korespondensi yang terdiri dari beberapa poin.

No	Tanggal	Aktivitas
1	26 Nopember 2021	Pembuatan akun
2	27 Nopember 2021	Submit abstrak pertama kali ke jurnal melalui sistem, yang mendapatkan balasan dari Pimpinan Redaksi, Prof. M. R. Kavianpour serta memperoleh <i>User Name</i> dan <i>Passwords</i> .
3	29 Nopember 2021; 9:08 PM	Mendapatkan balasan dari editor Office C.E.J (Civil Engineering Journal)
4	29 Nopember 2021; 6:42 AM	Mengirimkan surat balasan ke Editor, serta mengirimkan manuskrip lengkap yang pertama kali, melalui sistem
5	15 Januari 2022	Mendapatkan balasan dari editor Office C.E.J (Civil Engineering Journal) yang menyatakan bahwa : <i>Our decision is to: Revision Required</i> . Memperoleh masukan dari <i>reviewer 1</i> dan <i>2</i> serta masukan dari <i>Technical Editor</i> . Komentar dari <i>reviewer 1</i> sebanyak 15 butir dan <i>reviewer 2</i> sebanyak 6 butir. Komentar dari editor Teknik sebanyak 3 butir. Balasan melalui email.
6	25 Januari 2022	Mengirim revisi manuskrip ke 1 melalui sistem
7	5 Februari 2022	Mendapatkan balasan dari editor Office C.E.J (Civil Engineering Journal) yang menyatakan bahwa tata Bahasa Inggris masih manuskrip masih sangat buruk.
8	17 Februari 2022	Mengirim revisi manuskrip ke 2 melalui sistem.
9	20 Februari 2022	Mendapatkan balasan dari editor Office C.E.J (Civil Engineering Journal) yang

		menyatakan bahwa: <i>Our decision is to: Accepted.</i>
10	21 Maret 2022	Penulis membayar administrasi CEJ Iran
11	27 Maret 2022	Mendapatkan balasan dari editor Office C.E.J (Civil Engineering Journal) yang menyatakan bahwa administrasi jurnal telah dibayar.
12	1 Mei 2022	Permintaan proofread paper dari editor Office C.E.J (Civil Engineering Journal) dalam waktu 48 jam
13	7 Mei 2022	Permintaan <i>proofread</i> paper dari editor Office C.E.J (Civil Engineering Journal) dalam waktu 24 jam. Penulis setuju dengan perubahan judul yang dilakukan oleh Editor sehingga tidak mengirim balasan, karena ada keterangan yang menyatakan bahwa kalau tidak ada balasan maka manuskrip akan langsung dimuat atau <i>publish</i> . Di samping itu, editor menyertakan manuskrip yang akan <i>publish</i> .
14	10 Mei 2022	Manuskrip telah dimuat atau <i>publish</i> dimenu <i>current issues</i> di <i>Civil Engineering Journal</i> . Dimuat di <u>Vol 8, No 4 (2022)</u> .

KRONOLOGI KORESPONDENSI PUBLIKASI ARTIKEL PADA JURNAL INTERNASIONAL BEREPUTASI DAN BERFAKTOR DAMPAK

Judul	:	The Effects of Spillway Width on Outflow Discharge and Flow Elevation for the Probable Maximum Flood (PMF)
Jurnal	:	<i>Civil Engineering Journal Iran</i>
Volume	:	8
Nomor	:	4
Tanggal publikasi	:	10 Mei 2022
ISSN (p)	:	2676-6957
ISSN (e)	:	2476-3055
Halaman	:	723-733
Penerbit	:	Salehan Institute of Higher Education
SJR jurnal	:	0,98 (2021)
Quartile	:	Q1 (Scopus)
Cite Score	:	0,8 (2020)
Penulis	:	Yeri Sutopo; Karuniadi Satrio U.; Naufal Tinov

Bukti indexing journal:

Engineering | Civil and Structural Engineering | Iran | All types | 2021

Only Open Access Journals Only SciELO Journals Only WoS Journals

Display journals with at least 0 Citable Docs. (3years) [Apply](#)

[Download data](#)

1 - 7 of 7

Title	Type	SJR	H index	Total Docs. (2021)	Total Docs. (3years)	Total Refs. (2021)	Total Cites (3years)	Citable Docs. (3years)	Cites / Doc. (2years)	Ref. / Doc. (2021)
1 Civil Engineering Journal (Iran)	Journal	0.981 Q1	17	155	193	5452	1046	193	5.42	35.17
2 Asian Journal of Civil Engineering	Journal	0.397 Q3	25	112	288	4105	524	288	1.83	36.65
3 International Journal of Supply and Operations Management	Journal	0.334 Q3	7	21	84	1124	138	84	1.34	53.52
4 Scientia Iranica	Journal	0.306 Q3	57	277	831	11391	1228	826	1.41	41.12

Scopus Preview

Author Search Sources [Create account](#) [Sign in](#)

Source details

Feedback > Compare sources >

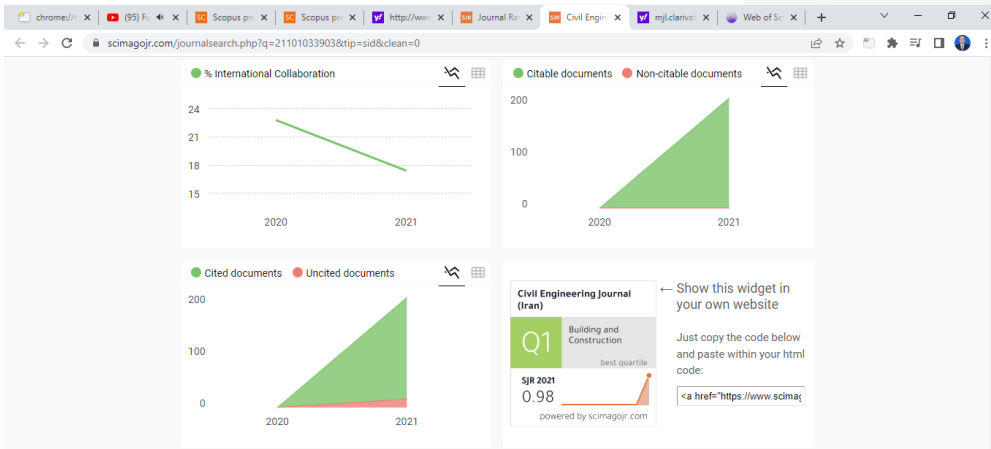
Civil Engineering Journal (Iran)
 Scopus coverage years: from 2020 to Present
 Publisher: Salehan Institute of Higher Education
 ISSN: 2676-6957 E-ISSN: 2476-3055
 Subject area: (Engineering: Building and Construction) (Earth and Planetary Sciences: Geotechnical Engineering and Engineering Geology)
 (Environmental Science: Environmental Engineering) (Engineering: Civil and Structural Engineering)

Source type: Journal

[View all documents >](#) [Set document alert](#) [Save to source list](#) [Source Homepage](#)

CiteScore 2020: 0.8

SNIP




**RINCIAN KRONOLOGI
KORSPONDENSI PUBLIKASI
ARTIKEL PADA JURNAL
INTERNASIONAL BEREPUTASI**

Pembuatan akun dan Submit abstrak pertama kali ke jurnal melalui sistem, yang mendapatkan balasan dari Pimpinan Redaksi, Prof. M. R. Kavianpour serta memperoleh *User Name* dan *Passwords*

chrome://newtab x (95) Pergilah Kasih - YouTube x Login x +

civilejournal.org/index.php/cej/login?source=%2Findex.php%2Fcej%2Fauthor

 **Civil Engineering Journal** ISSN (Online): 2476-3055
ISSN (Print): 2676-6957

Home About Submissions Login

Home / Login

Login


Username
yerl_30_7


Password
.....

Login

Forgot your password?

Not a user? Register with this site

Follow Us


Journal Imprint
JOURNAL IMPRINT
Indexing and Abstracting


Abstract

Title (original) : Relationship between Spillway Width, Inflow-outflow Discharge and Flow Elevation on Weir Crest in Cacaban

Flood routing will give you an idea of the relationship between flood design, reservoir basin, and outflow of spillway. The relationship between these three parameters can be used to determine the width of the spillway. The width of the spillway corresponding to the maximum outflow discharge and maximum water height above the weir can prevent overtopping of the dam. The purpose of this study was to analyze the effect of the width of the spillway on the flow elevation on above the weir crest based on the flood discharge design of the PMF return period using flood routing hydrologically at the Cacaban dam. The rainfall design $R_{\text{Probable Maximum Precipitation (PMP)}}$ used the Hershfield equation. The design flood discharge analysis Q_{PMF} was used of the Nakayasu Synthetic Unit Hydrograph (HSS). Flood routing was used hydrologic routing method. Cacaban Reservoir is located in Jati Village, Kedung Banteng District, Tegal Regency, Central Java Province. The result of the analysis of the research data found that when the width of the spillway is 48 m, the flow height above the weir is 1,787 m, while the maximum outflow is 229,349 m^3/s . When the spillway width is 58 m, the flow height above the weir is 1,721 m, while the maximum outflow is 261,833 m^3/s . It can be said that when the width of the spillway gets bigger, the flow height above the weir gets smaller, while the maximum outflow is even greater. Thus, if what is desired is a large volume of water storage in the reservoir, the width of the spillway is reduced, if the opposite is the width of the spillway is enlarged. The risk to be received by the reservoir is that the dam height must be increased.

Keywords: Flood routing; Inflow and outflow discharge; Flow elevation on the weir

[C.E.J] Submission Acknowledgement

External

Inbox



Prof. M. R. Kavianpour <kavianpour@civilejournal.org> Sat, Nov 27,
2021, 5:22 PM

to me

yeri Yeri Sutopo:

Thank you for submitting the manuscript, "Relationship between Spillway Width, Inflow-outflow Discharge and Flow Elevation on Weir Crest in Cacaban Dam, Tegal Regency, Indonesia" to Civil Engineering Journal. With the online journal management system that we are using, you will be able to track its progress through the editorial process by logging in to the journal web site:

Manuscript URL:

<https://www.civilejournal.org/index.php/cej/author/submission/3269>

Username: yeri_30_7

If you have any questions, please contact me. Thank you for considering this journal as a venue for your work.

Prof. M. R. Kavianpour
Civil Engineering Journal

Civil Engineering Journal
<http://civilejournal.org/index.php/cej>

Mengirimkan surat balasan ke Editor, serta mengirimkan manuskrip lengkap yang pertama kali, melalui sistem

[C.E.J] Relationship between Spillway Width, Inflow-outflow Discharge and Flow Elevation on Weir Crest in Cacaban Dam, Tegal Regency, Indonesia

External

Inbox



office C.E.J <office@civilejournal.org>

Mon, Nov 29, 9:08 PM
(3 days ago)

to me

Dear Dr. Sutopo,

We would like to inform you, Regular reviewing process takes 2.5-3 months and the article processing charge is 485 Euro which will ask after acceptance. But if you are in hurry, you can request for fast reviewing option which takes About 10 days (In this option the journal APC will increase to 795 (485 + 310) Euro due to the cost of the reviewers).

**It is important to pay attention there is not any guarantee to accept the articles with a fast option.

Regards,
Office C.E.J
Civil Engineering Journal

Civil Engineering Journal
<http://civilejournal.org/index.php/cej>

The screenshot shows the 'Active Submissions' page of the Civil Engineering Journal. The page includes a table of active submissions, a 'Start a New Submission' section, and a 'Rebacks' section. On the right side, there is a 'Journal Imprint' section with logos for Web of Science and Scopus, and a CiteScoreTracker 2021 score of 2.3.

Active Submissions

Active | Archive

ID	SubmitSec	Authors	Title	Status
3269	11-27 RA	Sutopo	Relationship between Spillway Width, Inflow-outflow...	In Editing Pay to Publish

1 - 1 of 1 Items

Start a New Submission

Click here to go to step one of the five-step submission process.

Rebacks

All | New | Published | Ignored

Date Added	Hits URL	Article	Title	Status	Action
There are currently no rebacks.					

Buttons: Publish, Ignore, Delete, Select All

Journal Imprint

JOURNAL IMPRINT

Announcement

It is a great honor for the Civil Engineering Journal to be indexed in **Web of Science (ISI)**.

It is a great honor for the Civil Engineering Journal to be accepted for inclusion in **Scopus**.

Indiced by **Scopus** **ELSEVIER**

CiteScoreTracker 2021

2.3 = 543 Citations to date
234 Documents to date

Yeri Sutopo <yerisutopo@mail.unnes.ac.id>

6:42 AM (5 minutes ago)

to office

Dear

Office C.E.J (Civil Engineering Journal)

Thank you for the information provided to me. Actually this offer is very attractive, but on this occasion I chose to follow the regular review process.

Best Regards,

Yeri Sutopo

Mendapatkan balasan dari editor Office C.E.J (Civil Engineering Journal) yang menyatakan bahwa : *Our decision is to: Revision Required*

[C.E.J] Editor Decision (Article #2021-3269)

External

Inbox



office C.E.J

Jan 15, 2022, 7:51 PM
(10 days ago)

to me

Dear Dr. Sutopo,

We have reached a decision regarding your submission to Civil Engineering Journal, "Relationship between Spillway Width, Inflow-outflow Discharge and Flow Elevation on Weir Crest in Cacaban Dam, Tegal Regency, Indonesia".

Our decision is to: Revision Required.

Please consider reviewer's comments, and revise that as soon as possible. If you do not submit the revision file, the article will be withdrawn within 20 days.

When you revise your manuscript please highlight the changes you make in the manuscript by using the track changes mode in MS Word or by using bold or colored text.

** Please upload the revised version into your user home> Review tab> Author Version.

Regards,
Editor in Chief: M. R. Kavianpour

Kavianpour@civilejournal.org

Reviewers' Comments:

Reviewer #1:

The topic is interesting and important. However, there are several key areas that need more work prior to publication. I have summarized the required changes in the hope that the feedback will be useful to you as you update the paper. I am not able to consider your manuscript for publication at the present time, but I hope you will consider the feedback provided by the following suggestions to revise your manuscript and re-submit.

- 1- The authors should ask the help of native English speaking proof reader, because there are too many typo and linguistic mistakes that should be fixed.
- 2- More suitable and general title should be selected for the article. "in Cacaban Dam, Tegal Regency, Indonesia" should be deleted from the title. Title should contain 10-12 words.
- 3- Abstract to modify: the abstract should contain Objectives, Methods/Analysis, Findings, and Novelty /Improvement. It is suggested to present the abstract in one 200 words paragraph.
- 4- The necessity and innovation of the article should be presented to the introduction.
- 5- Literature review is not enough. It is important to add some recent work (2017-2022) to the literature review. At least 9 new references should be added to article.
- 6- Authors have used to cite invalid references. It is important to replace them with some valid references from prestigious journals. (All of them except [5]!).
- 7- A flowchart should be added to the article to show the research methodology.
- 8- The exact location of the study area should be presented in a map. It is suggested to show the general view of the study area to detail (Country, city ...).
- 9- Provide further details on the case study specifications.
- 10- Provide more detailed specifications of the hydrology of the study area.
- 11- Provide annual rainfall charts.
- 12- Much more explanations and interpretations must be added for the result, which are not enough at all.
- 13- It is suggested to compare the results of the present study with previous studies and analyze their results completely.
- 14- It is suggested to organize Conclusion section much better. This section

should present in one 250-300 words paragraph.

15- It is important to add "Funding", "Author Contributions", "Data Availability" and "Conflict of Interest" statements at the end of the article.

Reviewer #2:

The main concern about the manuscript is its contribution to knowledge. It is expected that a critical gap analysis will be done in the introduction section to justify the necessity of doing this piece of research. It is partially done by the authors but it should consider all aspects of the problem including assumptions, limitations and constraints, pros and cons, and relative merits to the other publicly available studies and proposals.

- The manuscript needs language, grammar and syntactic editing. The English language usage should be checked by a fluent English speaker.

- However, the manuscript, in its present form, contains several weaknesses. Appropriate revisions to the following points should be undertaken in order to justify recommendation for publication.

- The research contributions of the paper should be articulated more clearly. The abstract is not representative of the content and contributions of the paper. The abstract does not seem to properly convey the rigor of research.

- Aside from the aim stated in the title, the research gap and the goals of the research are not specified which leads to the reader missing the significance of the research.

- The discussion section needs to be described scientifically. Kindly frame it along the following lines:

i. Main findings of the present study

ii. Comparison with other studies

iii. Implication and explanation of findings

iv. Strengths and limitations

v. Conclusion, recommendation, and future direction.

Technical Editor Comments:

- About 10 percent similarity has been detected in the present manuscript. I would ask you to re-paraphrase all sentences or paragraphs which have been copied from other resources. Source 1 should decrease less than 1 percent (See the attachment).

- If one of the referees has suggested that your manuscript should undergo English revisions, please address this issue during revision. We propose that you use editing services of the journal or have your manuscript checked by a native English-speaking colleague.
If you would like to use the journal English editing services, please send a request to the office email with subject "English Language Services request" and ask for this service. Please write the article ID and Title in it.

Civil Engineering Journal
<http://civilejournal.org/index.php/cej>

Mengirim revisi manuskrip ke-1 melalui system

Mendapatkan balasan dari editor Office C.E.J (Civil Engineering Journal) yang menyatakan bahwa tata Bahasa Inggris manuskrip masih sangat buruk

[C.E.J] Editor Decision (Article #2021-3269)-R1

External

Inbox



office C.E.J <office@civilejournal.org>

Sat, Feb 5,
9:48 PM

to me

Dear Dr. Sutopo,

We have reached a decision regarding your submission to Civil Engineering Journal, "Relationship between Spillway Width, Inflow-Outflow Discharge and Flow Elevation on Weir Crest".

Our decision is to: Revision Required.

Please consider reviewer's comments, and revise that as soon as possible. If you do not submit the revision file, the article will be withdrawn within 15 days.

When you revise your manuscript please highlight the changes you make in the manuscript by using the track changes mode in MS Word or by using bold or colored text.

** Please upload the revised version into your user home> Review tab>

Author
Version.

Regards,
Editor in Chief: M. R. Kavianpour
Kavianpour@civilejournal.org

Reviewers' Comments:

Authors should revise the article carefully. Please pay attention to the following comments:

- The authors should ask the help of native English speaking proof reader, because there are too many typo and linguistic mistakes that should be fixed. (e.g. The first line of the abstract is incomprehensible there is too many "on the" in it!).
- More suitable and general title should be selected for the article.
- Literature review is not enough yet. It is important to add some recent work (2018-2022) to the literature review. At least 5 new references should be added to article.
- Provide further details on the case study specifications (Type of the Spillway, Schematic view of Spillway and its geometrical parameters).
- Provide more detailed specifications of the hydrology of the study area.
- Provide annual rainfall charts.
- Much more explanations and interpretations must be added for the result, which are not enough at all.
- It is important to add "Funding", "Author Contributions", and "Data Availability" statements at the end of the article.

Technical Editor Comments:

- English is still weak and not acceptable. The authors should ask the help of native English speaking proof reader. We propose that you use one of the editing services listed at <https://www.euhera.org/language-editing-services/> or have your manuscript checked by a native English-speaking colleague.

Mengirim revisi manuskrip ke 2 melalui sistem



Yeri Sutopo <yerisutopo@mail.unnes.ac.id>

Thu, Feb 17,
10:19 AM

to office

Dear

Office C.E.J (Civil Engineering Journal)

Thank you for appreciating my manuscript. Today, Thursday, February 17, 2022, I have sent my second revision. Improvements have followed reviewers suggestions. The purple text is an additional discussion or references suggested by the reviewer. Please enlighten. Thank you.

Best Regards,

Yeri Sutopo

Attachments area

Judul artikel diubah atas saran dari reviewer menjadi “*The Effects of Spillway Width, Inflow-Outflow Discharge, and Flow Elevation on Weir Crest*”



Tulisan penulis di *Accepted*, ditawarkan dimuat di dalam *special issue*, namun penulis menolak

[C.E.J] Editor Decision (Article #2022-3269)

External

Inbox

office C.E.J

Sun, Feb 20, 3:07 PM
(15 hours ago)

to me

Dear Dr. Sutopo,

We have reached a decision regarding your submission to Civil Engineering Journal, "The Effects of Spillway Width, Inflow-Outflow Discharge, and Flow Elevation on Weir Crest".

Our decision is to: Accepted

If you want to publish your article into Special Issue "Innovative Strategies in Civil Engineering Grand Challenges" please pay the APC (Article Processing Charge) of the Civil Engineering Journal till 23rd of February.

PayPal (VAT (15%) Included):

Account Holder: Omid Aminoroayaieyamini (an invoice has been sent to you)

Amount: 631.2 USD (equivalent to 485 Euro + 15% VAT)

Kind Regards,

Editor in Chief: M. R. Kavianpour

Kavianpour@civilejournal.org

Civil Engineering Journal

<http://civilejournal.org/index.php/cej>

Surat penolakan penulis atas tawaran yang diajukan oleh CEJ

Feb 21, 2022,
7:33 AM

Yeri Sutopo <yerisutopo@mail.unnes.ac.id>

to office

Dear

Office C.E.J (Civil Engineering Journal)

Thank you for appreciating my manuscript entitled "The Effects of Spillway Width, Inflow-Outflow Discharge, and Flow Elevation on Weir Crest".

I also thank you for the decision that my manuscript with the above title was accepted for publication. However, I do not agree if it is published in special issues, because in Indonesia, manuscripts published in special issues cannot be used for academic promotions. Usually, lecturers in Indonesia write in Reputable Journals to increase their academic positions. Therefore, I request Office C.E.J to publish my manuscript in regular issues.

Best Regards,

Yeri Sutopo

Lapor yang ke-1, kepada Pimpinan Redaksi agar dikirim *account* baru dalam rangka memenuhi administrasi *Article Processing Charge*

Yeri Sutopo <yerisutopo@mail.unnes.ac.id>

Sun, Mar 20,
9:52 AM

to Kavianpour

Dear

Prof. M. R. Kavianpour

With this email I would like to ask if I could pay the Article Processing Charge for Vol. 8; Issue 03, 2022 to C.E.J through Omid Aminoroayaieyamini's account invoice No#:0531, Feb 20,2022? If possible then Article Processing Charge for Vol. 8; Issue 03, 2022 I would pay immediately. If not, then please give me a new PayPal account. Sorry if I ask a lot of questions. Please provide feedback. Thank you.

Best Regards,

Yeri Sutopo

Tanggapan yang kurang sesuai dengan pertanyaan namun hal ini bersangkutan paut dengan akan diterbitkannya manuskrip penulis di isu yang ke-3 atau bulan Maret

office@civilejournal.org

Feb 21, 2022,
12:42 PM

to me

Dear Dr. Sutopo,

Thank you for your email.

No matter. It is possible to assign your article to the regular issue
(Vol. 8; Issue 03)

Regards,
Office C.E.J
Civil Engineering Journal

Lapor yang ke-2, kepada Pengelola Jurnal agar dikirim *account* baru dalam rangka memenuhi administrasi *Article Processing Charge*

Yeri Sutopo <yerisutopo@mail.unnes.ac.id>

Feb 21, 2022,
4:02 PM

to office

Dear

Office C.E.J (Civil Engineering Journal)

Based on information that the payment of the article processing fee is no later than February 23, 2022. I have hope that the payment can be delayed until February 28, 2022, because I have to contact the Bank for payment via PayPal. In Indonesia, not all banks can help with payment processing via PayPal.

Based on the Office C.E.J email that the total fee I have to pay is 631.2 USD (equivalent to 485 Euro + 15% VAT). I will pay this amount in the period between 22 February 2022 to 28 February 2022.

This is the request that I submitted to the Office C.E.J. Thank you very much for the appreciation of my manuscript.

Best Regards,

Yeri Sutopo

**Lapor yang ke-3, kepada Pimpinan Redaksi
agar dikirim *account* baru dalam rangka
memenuhi administrasi *Article Processing
Charge***

Mar 20, 2022,
9:52 AM

Yeri Sutopo <yerisutopo@mail.unnes.ac.id>



Yeri Sutopo <yerisutopo@mail.unnes.ac.id>

to Kavianpour

Dear

Prof. M. R. Kavianpour

With this email I would like to ask if I could pay the Article Processing Charge for Vol. 8; Issue 03, 2022 invoice No#:0531, Feb 20,2022? If possible then Article Processing Charge for Vol. 8; Issue 03, 2022 I will use my PayPal account. Sorry if I ask a lot of questions. Please provide feedback. Thank you.

Best Regards,

Yeri Sutopo

Jawaban dari Pengelola Jurnal yang memberikan al *Article Processing Charge* yang baru



office@civilejournal.org

to me

Dear Dr. Sutopo,

Thank you for the email.

You can now cover the journal APC by the use of following link:

<https://buy.stripe.com/cN26qE41p7gX7ReaHT>

Regards,
Office C.E.J
Civil Engineering Journal

On 2022-03-20 09:24, kavianpour@civilejournal.org wrote:

> ----- Original Message -----

> Subject: Re: [C.E.J] Submission Acknowledgement

> Date: 2022-03-20 06:22

> From: Yeri Sutopo <yerisutopo@mail.unnes.ac.id>

> To: "Prof. M. R. Kavianpour" <kavianpour@civilejournal.org>

>

> Dear

>

> PROF. M. R. KAVIANPOUR

Mar 22, 2022, 3:07 AM



office@civilejournal.org

to me

Dear Dr. Sutopo,

Thank you for the email.

You can now cover the journal APC by the use of following link:

<https://buy.stripe.com/cN26qE41p7gX7ReaHT>

Regards,

Office C.E.J

Civil Engineering Journal

On 2022-03-20 09:24, kavianpour@civilejournal.org wrote:

> ----- Original Message -----

> Subject: Re: [C.E.J] Submission Acknowledgement
> Date: 2022-03-20 06:22
> From: Yeri Sutopo <yerisutopo@mail.unnes.ac.id>
> To: "Prof. M. R. Kavianpour" <kavianpour@civilejournal.org>

> Dear

> PROF. M. R. KAVIANPOUR



Mar 22, 2022, 1:53 PM

Yeri Sutopo <yerisutopo@mail.unnes.ac.id>
to office

Dear

Prof. M. R. Kavianpour

With this email, I inform you that I have paid the APC, below I attach the proof. In addition, I have also thank you.

Best Regards,

Yeri Sutopo

Attachments area



ReplyForward

Permintaan yang ke-1 proofread paper dari editor *Office C.E.J (Civil Engineering Journal)* dalam waktu 48 jam

May 1, 2022, 6:20 PM

office@civilejournal.org

to me

Dear Dr. Sutopo,

I would ask you to check the pre-publication format of your article in Civil Engineering Journal.
You have 48 hours to confirm it.

If we do not get your feedback, the publication process will start.

Regards,

Office C.E.J

Civil Engineering Journal



Perubahan judul yang ke-2 yang pada awalnya adalah “Relationship between Spillway Width, Inflow-outflow Discharge and Flow Elevation on Weir Crest in Cacaban Dam, Tegal Regency, Indonesia “, berubah menjadi “*The Effects of Spillway Width, Inflow-Outflow Discharge, and Flow Elevation on Weir Crest*”, berubah lagi menjadi “The Effects of Spillway Width, Inflow-Outflow Discharge, and Flow Elevation on Weir

Crest”. Penulis menyetujui perubahan ini karena lebih sesuai dengan substansi isi karya tulis ini.

Permintaan yang ke-2 proofread paper dari editor *Office C.E.J (Civil Engineering Journal)* dalam waktu 24 jam

office@civilejournal.org

May 7, 2022,
8:58 PM

to me

Dear Dr. Sutopo,


I would ask you to check the pre-publication format of your article in Civil Engineering Journal.

You have 24 hours to confirm it.



Manuskrip telah dimuat atau *publish* dimenu *current issues* di *Civil Engineering Journal*. Dimuat di Vol 8, No 4 (2022) Tanggal 10 Mei 2022

← → ↻ civilejournal.org/index.php/cej/issue/view/88 🔍 🌐 📄 📁 📧 📧 📧 📧 📧 📧



Civil Engineering Journal

ISSN (Online): 2476-3055
ISSN (Print): 2676-6957

🏠 Home 👤 About 🗑️ Editorial Team 📄 Issue ↗️ Submissions 📣 Announcements 📧 Contact 🔍 Focus & Scope 🔍 📄 Login

Home / Archives / Vol 8, No 4 (2022)

Vol 8, No 4 (2022)

April

Research Articles

Numerical Analysis of the Carrying Capacity of a Piled Raft Foundation in Soft Clayey Soils
Danish Ahmed, Siti Noor Linda bt Taib, Tahar Ayadat, Alsidiq Hasan
[PDF](#) | 622-636

Robust Open-Source Solution for Bridge Decrement Estimation for Data with Outliers
Tomasz Owerko, Piotr Owerko, Karolina Tomaszkiwicz
[PDF](#) | 637-653

Flexural Behavior of One-Way Slabs Reinforced with Welded Wire Mesh under Vertical Loads
El-Sayed S. Ewida, Rasha T. S. Mabrouk, Nasser El-Shafey, Akram M. Torkey
[PDF](#) | 654-670

Characteristics of Combined Rice and Wheat Husk Ashes as a Partial Replacement for Cement in Mortar
Damas Nangi Masanja, Mgaza Somo Muya, Patrice Nyangi
[PDF](#) | 671-682

Durability and Microstructure Characteristics of Concrete with Supplementary Cementitious Materials
K. J. Bramha Chari, V. Ranga Rao
[PDF](#) | 683-694

Applications of Nearest Neighbor Search Algorithm Toward Efficient Rubber-Based Solid Waste Management in Concrete
Yazan Alzubi, Hasan Alqawasmeh, Buthainah Al-Kharabsheh, Dana Abed
[PDF](#) | 695-709

Prediction of Urban Spatial Changes Pattern Using Markov Chain
N. AbdulRazak Hasach Albasri, S. M. Al-Jawari, O. Jassim Al-Mosherefawi
[PDF](#) | 710-722

The Effects of Spillway Width on Outflow Discharge and Flow Elevation for the Probable Maximum Flood (PMF)
Yeri Sutopo, Karuniadi Satrio Utomo, Naufal Tinov
[PDF](#) | 723-733



Follow Us



[in](#) [R⁶](#) [G](#) [A](#)

Journal Imprint

JOURNAL IMPRINT

Indexing and Abstracting

Indexed by  

Civil Engineering Journal (Iran)
Q1 Building and Construction
best quartile
SJR 2021 0.98
powered by scimagojr.com

Civil Engineering Journal is now the member of Committee on Publication Ethics (COPE).

COPE
Member since 2017
JM12538