

Jurnal_IJSDP_Fafurida_Publishe d.pdf *by*

Submission date: 12-May-2022 11:06AM (UTC+0700)

Submission ID: 1834353171

File name: Jurnal_IJSDP_Fafurida_Published.pdf (1.11M)

Word count: 4104

Character count: 23579

Implementation Model of Community Based Tourism on Rural Tourism



Fafurida Fafurida^{1,2*}, Ahmad Daerobi², Guntur Riyanto²

¹ Faculty of Economics, Universitas Negeri Semarang, Semarang, Central Java 50229, Indonesia

² Faculty of Economics and Business, Universitas Sebelas Maret, Surakarta, Central Java 57126, Indonesia

Corresponding Author Email: fafurida@mail.unnes.ac.id

<https://doi.org/10.18280/ijstdp.170215>

ABSTRACT

Received: 19 October 2021

Accepted: 23 November 2021

Keywords:

community based tourism, rural tourism, rural development

One effort of increasing rural economy can be conducted by developing rural tourism. Tourism sector is considered to be capable to encourage the development of other economy sectors. Tourism also contributes in increasing job opportunity and income. The bottom up planning paradigm expects the community to take roles as both subject and object of development. Dieng Plateau as a tourist attraction has various kinds of attractions. Rural tourism is designed by the local community to the tourist attraction in Dieng. This research aims at identifying how the implementation model of Community Based Tourism has been conducted to the development of Dieng Kulon rural tourism. This research is a qualitative one, which uses the primary data taken from Observation Technique and Focus Group Discussion. The analysis used in this research is descriptive qualitative and Participatory Rural Appraisal (PRA). This research has found a model of Community-Based Tourism that has been conducted in the development of Dieng Kulon rural tourism through *Pokdarwis* (Tourism Awareness Group) and *Pokja* (Workgroup) establishment on eight fields. The Community Based Tourism model that has been tested and implemented in this research may complement the models in the previous research findings, which show the roles and functions of each actor of tourism development.

1. INTRODUCTION

One alternative to develop the rural economy is by developing the rural tourism. Tourism sector nowadays is considered to be capable to encourage the development of other economy sectors either directly or indirectly [1]. Tourism also contributes in increasing job opportunity and income [2] in which when a tourism development occurs in a region, this may encourage the emergence of job opportunities for the surrounding community because the potential business emerges in line with tourism development. The income of community living around the tourism development will increase with those job opportunities.

Indonesia has rural natural charm and abundant culture in every region with its different uniqueness. It makes Indonesian tourism become one industry which development should be encouraged. According to Teodoro et al. [3], rural tourism is viewed as a strategy for rural development. Tourism is a program that directly touches and involves the community so that it brings many impacts on the local community. This has been proved by Ibanescu et al. [4] in a research conducted in rural area in Rumania, which found that tourism can really contribute to the sustainable growth in rural areas.

The importance of participation of all elements of society including local community in tourism development is stated in the Government Regulation of the Republic of Indonesia Number 50 of 2011 on the National Tourism Development Master Plan for 2010-2025. This regulation states that "Community empowerment is an effort to increase awareness, capacity, access, and community's role, either individually or in groups, in improving the quality of life, independence and

welfare through tourism activities. This is strengthened by the findings from [5] research, which shows that local community participation in decision-making, community empowerment, and community knowledge about tourism affect the sustainability of rural tourism development.

According to Soekarya, tourist attraction potential either with natural or cultural nuances commonly exists in rural areas, in line with the Indonesian society who mostly live in rural areas [6]. Therefore, various potential attractions of tourism should be developed so that the community will get the great benefit related to the existing rural potential by creating the rural tourism area.

In many regions, the government develops rural tourism that in the future hopefully will give high multiplier effect on the village or the surrounding areas. This is in accordance with a research conducted by Škuflić and Štoković [7], which mentions that tourism industry may become a driving force in overcoming the economy problem in a region. Rural tourism and various related programs can be considered as the main axis of village development strategy that can protect the fragile socio-economic order in a short-term, and create the sustainable development in a long-term [8]. The development of rural tourism is considered to be able to boost the community's economy.

The community's active involvement can be conducted in rural tourism management as an effort to increase the rural community's economy by utilizing the existing potentials so that the community-based tourism concept will be very suitable to implement. Community-based tourism is proved as one effort to increase the rural economy [9]. The local community's involvement in developing the rural tourism is

significant as they recognize and understand the potential of their region well. Besides, this involvement is very important to get support and to ensure that the local community will find the appropriate needs and benefit from this program. The implementation of the use of community-based tourism concept is also in line with The Regulation of Minister of Villages, Development of Disadvantaged Regions and Transmigration Number 13 in 2020 on the priority of using village funds in 2021, which has divided villages into 8 village typologies and 18 village SDGs objectives starting in 2021-2030.

Dieng Plateau is one area with a lot of natural tourism potentials in Central Java. Located at an altitude of 2,100 masl with a beautiful landscape, this area becomes the choice of rest area since the colonial era until now. The cool area, the natural environment, supported by various kinds of natural and cultural potentials magically invite people to come. There are some rural tourism in this area that become the destinations for both domestic and foreign tourists. Dieng Kulon Rural tourism, as one of rural tourism in this area, is located in Batur District, Banjarnegara Regency. The location borders Pranten Village, Batang Regency, in the North, and borders Dieng Wetan Village and Sikunang Village, Wonosobo Regency in the East and South, while in the West it borders Karang Tengah Village. Dieng Kulon having an area of about 337,846 Ha with the dominant landscape is the hills that previously were a conservation area but now some have been transformed into potato gardens. There are about 163,603 Ha for agricultural area and 186,9 Ha of protected forest. Specifically, Dieng Kulon Village is located at an altitude of 2093 masl. It is about 55 km far from Banjarnegara city.

The planning of rural tourism in Dieng Plateau area has started from Dieng Kulon Village, which is seen as a place with relatively developed access and availability of facilities compared to other village areas. Besides its strategic location because it is very close to the "main" objects included in zone one in Dieng Plateau tourist zoning map, there are also supporting facilities such as homestays, souvenir stalls, parking area, information facilities, and so on. Some of the existing facilities have been provided by the Dieng UPTD manager under the Tourism Office of Banjarnegara Regency, but there are also other facilities that are prepared by the local community, such as home stays, tourist transportation, etc.

The "Conventional" objects as the tourist attractions to visit Dieng Kulon Rural tourism can be seen in details as follows:

a) Natural tourist attractions: Bale Kambang Lake, Temple Complex, Sikidang Crater, Gasiran Aswotomo, Sendang Sedayu, and Semurup Lake.

b) Cultural tourist attractions: Agrotourism & Living Culture of Dieng community, Frizzy Hair Treatment Cultural Performance (Dieng Culture Festival), Kayu Dewa Batik, Dieng Temple Miniature, Dieng Culinary Tour.

c) Artificial attraction: Adventure Tour.

A lot of attractions in this rural tourism has invited either many domestic or foreign tourists. This certainly brings impact on the increase in economy activities in this rural tourism. The role of Community-Based Tourism in this rural tourism has supported the local community's welfare. Community-Based Tourism (CBT) Management is also in accordance with the principles in sustainable tourism, which has small scale but is capable to bring great benefit for the local community [10]. This is also delivered by the studies of [11-18]. The community has a big role in the management and providing facilities for the visiting tourists. This certainly becomes a very

good example for rural tourism management. Therefore, the aim of this research is to identify the implementation model of Community-Based Tourism that has been conducted in developing Dieng Kulon rural tourism.

2. METHOD

This is a qualitative research, which uses primary data taken from Observation Technique and Focus Group Discussion. The data information source in this research is the information from key persons. The key persons are selected based on the selection of actors involved in the development of rural tourism areas. The key persons of this research are the head of Dieng tourism cluster, the head of LPP on entrepreneurship and employment, community tourist activists, community representatives, tourists, and academics. The analysis used to identify the implementation of Community-Based Tourism in this research are descriptive qualitative analysis and Participatory Rural Appraisal (PRA). The qualitative analysis is used in this research because it can provide clear description about how the implementation of Community Based Tourism model is conducted. Various information collected from the key persons are described in flow chart model that explains the implementation of this model.

The Participatory Rural Appraisal (PRA) analysis is also used in this research in which PRA is an approach method to learn the rural condition and life, from, with, and by the rural community. Or in other words, it can be called as a group of approach method that enable the rural community to share each other, to increase and analyze their knowledge about the rural condition and life, and to make plan and to act [19]. The basic concept of PRA view is an approach that emphasizes on the community involvement in the whole programs. So this method is believed to be able to present the valid information from the phenomena occurring in the research object environment.

3. RESULT AND DISCUSSION

The efforts to recognize self-potential have been conducted by the community of Dieng Kulon. This is a very good beginning for them. Various kinds of attractions as the capital in developing tourism such as arts, traditional food, handicrafts, agricultural activities, and traditional children play are "something" that can be packaged as a community tourism offer. The attraction capital should be supported by the community's awareness to participate and take roles in developing tourism in this area through local tourist institution such as *Kelompok Sadar Wisata/Pokdarwis* (Tourism Awareness Group). The government should support to establish *Pokdarwis* in every district or tourist area. *Pokdarwis* is a social institution bottom-up established as the initiative of the community to seriously manage the tourism in their region. The awareness in seeing themselves and their environment is the basic supply to run the tourist business more seriously in the village. However, it is not easy to make a new step by moving from agricultural economy to service economy. The community should be invited to critically identify various problems either internally or externally.

The results of identifying various potential resources in Dieng Kulon can be classified covering physical, biotic, and socio-cultural components, as seen in the Table 1.

Table 1. Classification of tourism potentials and development opportunities

Types	Attraction Potentials	Development Opportunities
Physical/Natural	Hill Landscape	Programs of tracking, outbound, tourist guide
	Scater	Binocular rental, tourist guide
	Waterfall	Programs of tracking, outbound, tourist guide
	Lake	Fishing rod rental, water tour (boats)
Biotic/Vegetation	Temple Complex	Dieng specialty crops sales area
	Carica	Carica garden Demplot, Carica processed business
	Purwaceng	Purwaceng garden Demplot, Purwaceng processed business
	Dutch Eggplant	Dutch Eggplant garden Demplot, Dutch Eggplant processed business
Socio-Cultural	Bunut Guava	Bunut Guava garden Demplot
	Arts: Rampak Yakso dance, Fizzly Hair	Cultural performance, dance studio, Dieng specialty cultural event
	Cut Treatment	
	Museum	Education Tour: archeology, history, Dieng culture and geothermal learning

From the above table, there is a “collective awareness” of the potentials that can be developed, not only opening the homestays. This awareness will make it easier to invite the community to make a plan of rural tourism model in accordance with the locality principle. This will also encourage the roles and readiness of the rural community to be the service business actors, not only become the potato farmers. They are also invited to think that the programs that can be developed in the future do not only rely on the Dieng specialty objects, such as lakes, temples, and craters, but can also be conducted by inviting the tourists on site to the potato garden, to the kitchen, to the farm, and so on, so that there will be an integration between the agricultural and tourism sectors. It means that tourism entering villages does not replace the community’s main economy activity, but even it gives additional alternatives for the farmers’ household to develop the service sector [20]. For the tourists themselves, as long as they live in homestay, socialize, and enjoy the Dieng farmers’ life, they will get new experience they have not got before. In developing the village as tourist object, it should be understood from the beginning that the local community is not the passive object but even the active one. It is in accordance with the applied Community-Based Tourism concept.

A rural environment can be seen both as tourist object and subject. As an object, the village is the aim of tourism activities, while as a subject, it is an organizer in which whatever produced by the village will be directly enjoyed by its community and their active role determines its continuity [21]. The interaction activity intertwined between the tourists as the guests and the community as the host will arise cultural experience. Such a cultural interaction can be intertwined in social community activity, community housing activity either private or communal, coaching and management activity to increase the human resources in skills and administrative management aspect for the rural activities or the tourism activity itself, and the last tourism activity. Tourism activities may include attractions and accomodation [22]. Attraction programs include traditional ceremony program, rural art program, sport program, eating and drinking program, and so on. While for accomodation it needs residence for tourists who want to stay for a while, and this also needs to be considered. Some special residence can possibly be developed as accomodation means by conducting improvement, keeping cleanliness, so that it can fulfill the minimum standard of accomodation seen from health and convenience, covering air circulation, lighting, sanitation, and provision of toilet means.

Participatory Rural Appraisal (PRA) method was used to produce attraction mapping in rural tourism, which was conducted by the community. The provision of tourist

object/attraction is the main thing encouraging the emergence of tourism activity. “Something to see” in the form of attraction should be available to make it tourist object [23]. It is the same thing as what can be presented/offered to the tourists when they stay in a homestay. Through discussions with the community it appears that the community understand about the tourist object as the attraction all this time and also the potential distribution that can be upheld as agricultural-based attraction in Dieng Kulon village. This village that is included in the “shaft” area of Dieng Plateau tourism actually has strategic position supported by the tourism supporting means most of which exist in the area, such as sub terminal, Arjuna Temple complex, food stalls, Withliem meeting hall, and other means. The area of Arjuna Temple complex can be said as the “zero point” of the beginning of tourist service center in Dieng Plateau. The discussion results have found that the community have understanding on resources/attractions frequently visited by the tourists or places where the local guides often ask their tourists to go there, such as Arjuna Temple, Bale Kambang, Kailasa Museum, Bima Temple, and Sikidang Crater. Merdada Lake and other natural objects still belong to Banjarnegara Regency area. This tourist attraction mapping result also provides knowledge about alternative potential of attractions existing in rural areas or by utilizing the local agricultural resources to be upheld as the tourist attraction. It includes Purwaceng agriculture, Bunut guava agriculture, Dutch eggplant, Dieng sheep farm characterized with thick fur, and also manufacturing attraction centers of potato chips, carica pickles, and others. The mapping result with the community then is processed and graphically performed as tourist object distribution map of Dieng Kulon Village area, as presented in Figure 1.

In identifying the Community-Based Tourism implementation, the role connection among the institutions related to rural tourism development should be identified [24]. This step is conducted to give understanding that establishing tourism is not only the community’s responsibility, but the collaboration and partnership can be developed to encourage the acceleration of implementing the tourism development. The environment of Dieng Kulon village is included, too. From the identification that has been successfully developed, Dieng Kulon rural community has also formed a tourist management institution called Dieng Pandawa. Tourism Awareness Group (*Pokdarwis*) functions as the government partner and the facilitator in implementing and monitoring the tourism activities in Dieng area, particularly those included in Batur District, Banjarnegara Regency. At the beginning the motivation to arrange and establish the tourism activities is more oriented in agricultural tourism. What the Dieng Kulon

community has conducted is still an “embryo” including the establishment of Tourism Awareness Group (*Pokdarwis*) called Dieng Pandawa. Some programs included in *Pokdarwis* are: tourism order safety *Pokja*, home industry *Pokja* (special food), homestay *Pokja*, tour guide *Pokja*, art and culture *Pokja*, agrotourism *Pokja*, handicraft/souvenir *Pokja*, marketing *Pokja*.

Besides *Pokdarwis*, the result of Focus Group Discussion

also produces the identification of other institutions having direct or indirect connection with the community in Dieng Kulon village. When examined further, it can be presented in a matrix (Table 2).

From various identifications conducted through research process, the model of rural tourism development applied in Dieng Kulon that has brought success in this rural tourism can be described in Figure 2.



Figure 1. Tourism attraction mapping of Dieng Kulon rural tourism

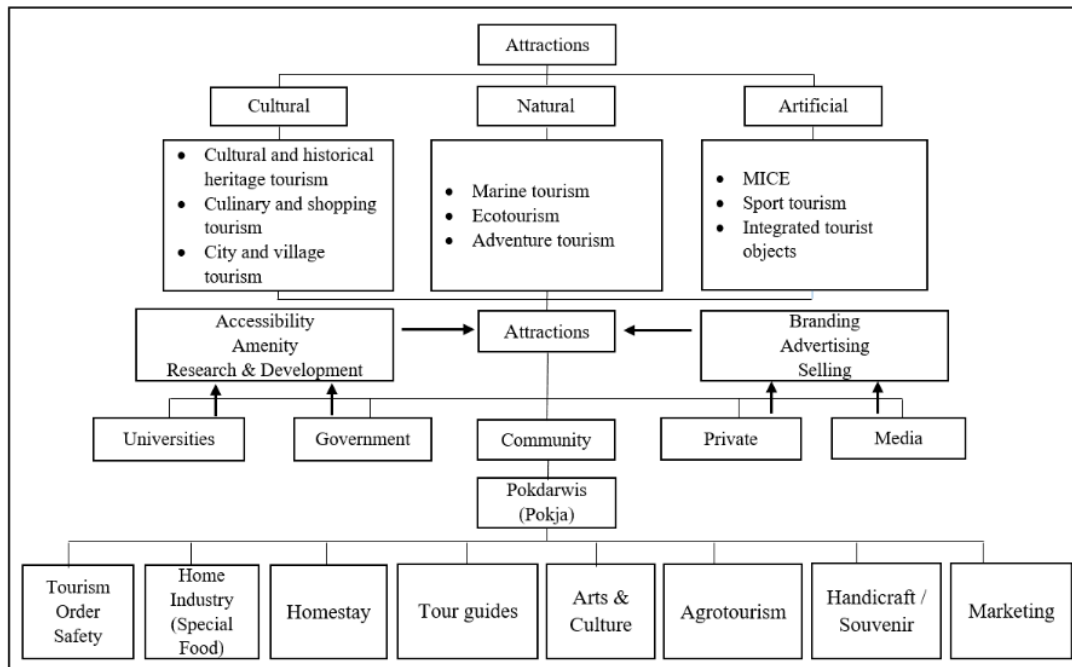


Figure 2. Implementation model of community-based tourism in developing rural tourism in Dieng area

Table 2. The roles of actors supporting Dieng Kulon rural tourism development

Actors	Roles
Government	<ul style="list-style-type: none"> • Supporting fund and programs to increase the HRD capacity of tourist actors <ul style="list-style-type: none"> • Holding events and festivals • Policies related to the development of tourism areas <ul style="list-style-type: none"> • Partners of rural tourism management • Facilitating the physical and non-physical facilitation development of rural tourism area <ul style="list-style-type: none"> • Branding, Advertising, Selling • Research and dedication
Universities	<ul style="list-style-type: none"> • KKN Program (Community Service Program) <ul style="list-style-type: none"> • Training of tourist actor HRD • Business assistance • Investment • Tourist business opening • Corporate Social Responsibility
Private / Industry	<ul style="list-style-type: none"> • Establishment of <i>Pokja</i> or <i>Pokdarwis</i> <ul style="list-style-type: none"> • Rural tourism management • Provision of homestay
Community	<ul style="list-style-type: none"> • Tourism business (culinary, transportation service, home industry, safety service, agrotourism, handicrafts)
Media	<ul style="list-style-type: none"> • Branding, Advertising, Selling

The development of various kinds of attractions either natural, cultural, or artificial in Dieng area are supported by the roles of community, government, private sectors, universities, and media. The implementation model of Community-Based Tourism in developing Dieng Kulon rural tourism is conducted through maximizing the community's role in *pokdarwis* and *pokja* in eight fields. The *pokja* includes tourism order safety *pokja*, home industry *pokja* (special food), homestay *pokja*, tour guide *pokja*, art and culture *pokja*, agrotourism *pokja*, handicraft/souvenir *pokja*, marketing *pokja*.

3. CONCLUSION

This research applied participatory approach. It was specifically applied in rural tourism in Dieng Plateau, exactly in Dieng Kulon Village, Batur District, Banjarnegara Regency. The study departed from an assumption that the development success in any forms including tourism should involve the community as the subject. Besides, this method is applied so that there is no failure as the previous development model that tended to be not participatory. Therefore, the participatory development in this approach is viewed as strategic method to improve the previous planning process, or to put forward the learning process from and with the local community. The research result has produced a formulation that the existence of Dieng area as a national even an international destination is able to attract the tourists' attention. Although the model of conventional tourism in massive tourism form still dominates, it does not close opportunities to catch the tourists' attention who have special interest on learning closer to the rural community life. There are motivation and collective encouragement from most of community in Dieng village to manage the tourism as a response to the uncertainty of agriculture. In community level, there has been rural-based tourism management. This study has also produced a participatory planning model which results are understanding various potentials and problems covering the tourism development in Dieng, and the connection of roles and function among the institutions considered to give contribution to tourism in Dieng Kulon in particular and in Dieng Plateau in general, also the implementation of Community-Based Tourism applied in developing Dieng

Kulon rural tourism by maximizing the community's role in *pokdarwis* and *pokja* in eight fields.

The Community-Based Tourism model that has been tested and implemented in this research may complement the models in the previous research findings, which have not shown yet the roles and functions of each actor of tourism development. For the future policies, this model can be implemented in many regions that have the same characteristics by prioritizing the rural tourism.

REFERENCES

- [1] Dwyer, L., Forsyth, P., Spurr, R. (2006). Assessing the Economic impacts of events: A computable general equilibrium approach. *Journal of Travel Research*, 45(1): 55-66. <https://doi.org/10.1177/0047287506288907>
- [2] Lee, C.C., Chang, C.P. (2008). Tourism development and economic growth: A closer look at panels. *Tourism Management*, 29(1): 180-192. <https://doi.org/10.1016/j.tourman.2007.02.013>
- [3] Teodoro, A., Dinis, I., Simões, O., Gomes, G. (2017). Success factors for small rural tourism units: An exploratory study in the Portuguese region of Serra da Estrela. *European Journal of Tourism Research*, 17: 136-148.
- [4] Ibanescu, B.C., Stoleriu, O.M., Munteanu, A., Iașu, C. (2018). The impact of tourism on sustainable development of rural areas: Evidence from Romania. *Sustainability*, 10(10): 3529. <https://doi.org/10.3390/su10103529>
- [5] Fong, S.F., Lo, M.C. (2015). Community involvement and sustainable rural tourism development: Perspectives from the local communities. *European Journal of Tourism Research*, 11: 125-146.
- [6] Soekarya, T. (2011). Improving the people's economy through the development of tourist villages: An input for development in kakaskapen two, barnacles and punten. Ministry of Culture and Tourism, Jakarta.
- [7] Škuflić, L., Štoković, I. (2011). Demand function for Croatian tourist product: A panel data approach. *Modern Economy*, 2: 49-53. <https://doi.org/10.4236/me.2011.21008>
- [8] Giannakis, E. (2014). The role of rural tourism on the

- development of rural areas: The case of Cyprus. *Romanian Journal of Regional Science*, 8(1): 38-53.
- [9] Johnson, P.A. (2010). Realizing rural community based tourism development: Prospects for social-economy enterprises. *Journal of Rural and Community Development*, 5(1): 150-162.
- [10] Murphy, P.E. (1985). *Tourism: A Community Approach*. 1st Edition, London.
- [11] Inskip, E. (1994). National and regional tourism planning: methodologies and case studies. *Journal of Vacation Marketing*, 2(4): 382-384. <https://doi.org/10.1177/135676679600200409>
- [12] Neil, J., Wearing, S. (1999). *Ecotourism: Impacts, Potentials and Possibilities*. Butterworth-Heinemann, Linacre House, Jordal Hill, Oxford.
- [13] Hatton, M.J. (1999). *Community-based tourism in the Asia-Pacific*. Humboldt College, School of Media Studies, Toronto.
- [14] Garrod, B. (2003). Local participation in the planning and management of ecotourism: A revised model approach. *Journal of Ecotourism*, 2(1): 33-53. <https://doi.org/10.1080/14724040308668132>
- [15] Potjana, S. (2003). *Community Based Tourism Handbook*. Rest Project, Thailand.
- [16] Hausler, N., Stradas, W. (2003). *Training Manual for Community-Based Tourism*. Inwent, Zschortau.
- [17] Beeton, S. (2006). *Community Development through Tourism*. Landlinks Press, 150 Oxford Street, Collingwood VIC 3066, Australia. <https://doi.org/10.1071/9780643093881>
- [18] Simpson, M.C. (2008). Community Benefit Tourism Initiatives-A conceptual oxymoron? *Tourism Management*, 29(1): 1-18. <https://doi.org/10.1016/j.tourman.2007.06.005>
- [19] Chambers, R. (1996). PRA (Participatory Rural Appraisal) Memahami Desa Secara Partisipatif. Kanisius, Dwiipayana, Yogyakarta.
- [20] Vital, K., Uladzimir, G., Alena, P., Ina, S. (2020). Sustainable development modeling of agritourism clusters. *Management Theory and Studies for Rural Business and Infrastructure Development*, 42(2): 118-127. <https://doi.org/10.15544/mts.2020.12>
- [21] Pretty, J. (1995). The Many Interpretations of Participations. *Focus* 16.
- [22] Capone, F. (2015). *Tourist Clusters, Destinations and Competitiveness*. Routledge.
- [23] Oka, Y. (1996). *Introduction to Tourism Science*. Angkasa, Bandung.
- [24] Fafurida, F., Oktavilia, S., Prajanti, D.W.P., Maretta, Y. A. (2020). Tourism and economic development in Indonesia. *International Journal of Scientific & Technology Research*, 9(3): 6476-6479.

Jurnal_IJSDP_Fafurida_Published.pdf

ORIGINALITY REPORT

3%

SIMILARITY INDEX

3%

INTERNET SOURCES

2%

PUBLICATIONS

1%

STUDENT PAPERS

PRIMARY SOURCES

1

pdfs.semanticscholar.org

Internet Source

2%

2

E Firdaus, S Andrikasmi. "Women's Role in Smoke Fish Processing Business in Koto Mesjid Village XIII Koto Kampar Kampar District, Riau Province", IOP Conference Series: Earth and Environmental Science, 2021

Publication

1%

3

Submitted to University of Ulster

Student Paper

1%

4

ijicc.net

Internet Source

1%

Exclude quotes On

Exclude matches < 1%

Exclude bibliography On

Jurnal_IJSDP_Fafurida_Published.pdf

GRADEMARK REPORT

FINAL GRADE

/0

GENERAL COMMENTS

Instructor

PAGE 1

PAGE 2

PAGE 3

PAGE 4

PAGE 5

PAGE 6
