

Antiproliferative and apoptosis effect of hyptolide from *Hyptis pectinata* (L.) Poit on human breast cancer cells

by Nur Amalina

Submission date: 27-Apr-2022 11:11AM (UTC+0700)

Submission ID: 1821563997

File name: iproliferative_and_apoptosis_effect_of_hyptolide_from_Hyptis.pdf (817.78K)

Word count: 4559

Character count: 25008



Antiproliferative and apoptosis effect of hyptolide from *Hyptis pectinata* (L.) Poit on human breast cancer cells

Meiny Suzery^{1*}, Bambang Cahyono¹, Nur Dina Amalina²

¹Chemistry Department, Faculty of Sciences and Mathematics, Diponegoro University, Semarang, Indonesia.

²Pharmacy Study Program, Chemistry Department, Faculty of Mathematics and Natural Sciences, Semarang State University, Semarang, Indonesia.

ARTICLE INFO

Received on: 26/09/2019
 Accepted on: 24/12/2019
 Available online: 05/02/2020

Key words:

Hyptis pectinata (L.)
 Poit, hyptolide, cytotoxic,
 apoptosis, antiproliferative,
 MCF-7 cells.

ABSTRACT

Hyptolide was isolated from the leaves of *Hyptis pectinata* (L.) Poit and was studied in order to discover and develop an anticancer drug. Hyptolide was obtained as a crystal of 87°C–88°C melting point. Spectroscopic identification results show a wave number at 1,735 cm⁻¹ indicating the presence of α,β -unsaturated δ -lactone. Gas chromatography-mass spectrometry (GC-MS) analysis provides a single peak in the retention time of 11.701 by m/z value at 239, which indicates explicitly hyptolide. The objective of this research was to evaluate the hyptolide's mechanism of cytotoxic on MCF-7 human breast cancer cells in positive estrogen receptor. The assay test to 3-(4,5-dimethylthiazol-2-yl)-2,5-diphenyl tetrazolium bromide (MTT) showed that hyptolide exhibited cytotoxic effects on MCF-7 and T47D breast cancer cells with an IC₅₀ value of 76.76 and 181.55 μ g/ml, respectively. Interestingly, the treatment of hyptolide for 24, 48, and 72 hours decreased cell viability on MCF-7 with dose- and time-dependent manner compared to untreated cells. Results of acridine orange-ethidium bromide multiple staining assay revealed that hyptolide induced apoptosis in a dose-dependent manner. It can be concluded that hyptolide possesses antiproliferative effects through apoptosis induction.

INTRODUCTION

Breast cancer frequently occurs among women, impacting 2.1 million women each year. It also causes the highest number of women with cancer-related death (Sasco, 2003; WHO, 2018). Breast cancer is the most common cancer in Indonesia and is a leading cause of mortality, where 21.5 deaths in every 100,000 persons are caused by breast cancer (Mardela *et al.*, 2017; Sinaga *et al.*, 2018). The most effective treatments for breast cancer are chemotherapy, radiation therapy, and surgery or in special cases, they used in combination (Takimoto and Calvo, 2005). Unfortunately, long-term effects of these cancer treatments have several side effects such as anemia, appetite loss, fatigue, alopecia, toxicity, and drug resistance (Kayl and Meyers, 2006; Tacar *et al.*, 2013). Over the past 30 years, the estrogen receptor (ER) has been the most critical target and implicated to breast cancer

progression (Ariazi and Jordan, 2006; Paruthiyil *et al.*, 2004; Roy and Vadlamudi, 2012). Blocking the action of estrogen has been shown to reduce breast cancer proliferation and incidence in high-risk women by 50%–75% (Lewis-Wambi and Jordan, 2009; Tian *et al.*, 2018). The previous study also found that estrogen administration causes breast cancer while antiestrogen prevents it (Hollingsworth *et al.*, 1998; Jenie *et al.*, 2019). Those findings provide compelling evidence that estrogen and ER have a significant role in the progression of breast cancer. Therefore, based on this reason, the development of new cytotoxic activity in a natural product is significantly crucial for the discovery of safer and more effective chemotherapy agent on ER-positive breast cancer.

One of the herbal plants *Hyptis pectinata* (L.) Poit – popularly known in Brazil as “sambacaita” or “canundiho” (Franzotti *et al.*, 2001) – belongs to one of the family lamiaceae and easily found in another tropical as America, Africa, India, and Indonesia. *Hyptis pectinata* (L.) Poit has been proven to have several kinds of effects, such as antinociceptive, antiedematogenic, analgesic, anti-inflammatory, and anticancer (Arrigoni-blank *et al.*, 2008; Lisboa *et al.*, 2006; Raymundo *et al.*, 2011). The

*Corresponding Author

Meiny Suzery, Chemistry Department, Faculty of Sciences and Mathematics, Diponegoro University, Semarang, Indonesia.
 E-mail: meiny_suzery@yahoo.com

previous study also reported that *Hyptis pectinata* (L.) poit extract inhibits cancer cell growth on HCT-8, MDA-MB-231, and MCF-7 cells (Barbosa *et al.*, 2012; Santana *et al.*, 2019; Suzery and Cahyono, 2014). The major compound of this plant is hyptolide (α,β unsaturated δ - lactone) with 2% yield and minor compounds are pectinolide A-G, sambacaitaric acid, and 3-O-methyl-sambacaitaric acid (Falcao *et al.*, 2013; Miranda *et al.*, 1993). Pectinolide A-C exhibit significant antimicrobial and cytotoxic activities on many types of cancer, specifically human breast cancer cells (Miranda *et al.*, 1993). That demonstrates the antitumor potential of this secondary metabolites class. To date, no studies have reported the primary compound of this plant (hyptolide isolated from *Hyptis pectinata* (L.) Poit), which concerns on antitumor activities and suggests hyptolide as an anticancer agent. In this research, we observed the effect of hyptolide isolated from *Hyptis pectinata* (L.) Poit on the cell viability, proliferation, and apoptosis on ER-positive breast cancer cells.

MATERIALS AND METHODS

Plant material

Hyptis pectinata (L.) Poit was collected in October 2014 in Kanayakan village, Bandung West Java, Indonesia (Latitude -7.0460282 ; Longitude 107.7915393). For biological studies, the leaves were dried in a renewal air oven and circulated at 40°C until it is completely dehydrated. The Biologist at Ecology and Biosystematics Laboratory, Faculty Science and Mathematics, Diponegoro University, Semarang, Indonesia confirmed the identification of the plant (USDA, 2016). A Voucher specimen (MS 100562) was deposited at the Herbarium Biology, Faculty Science and Mathematics, Diponegoro University, Semarang, Indonesia.

Extraction and isolation procedure

Dried powdered leaves (0.710 kg) were extracted by the maceration method using methanol at room temperature. After filtration, the solvent was evaporated to result in the crude extracts of the plant under reduce pressure in a rotary vacuum evaporator. The crude extracts were dissolved in water for 24 hours, and the partitioned water-methanol was evaporated until dry. Hyptolide was isolated in 1.7% yield from extracts of methanol (Achmad *et al.*, 1987; Suzery *et al.*, 2012).

Cell culture

Michigan Cancer Foundation (MCF-7) and T47D cells were collected from the American Type Culture Collection. MCF-7 and T47D cells were particularly cultured in Dulbecco's Modified Eagle's Medium (Gibco, USA) with 10% (v/v) fetal bovine serum (Gibco, USA), 12.5 $\mu\text{g}/\text{ml}$ Amphotericin B (Gibco), 150 $\mu\text{g}/\text{ml}$ Streptomycin, and 150 IU/ml penicillin (Gibco). Cells were cultivated at 37°C with 5% CO_2 in a humidified atmosphere.

Cytotoxic assay

The cytotoxicity of hyptolide was tested using MTT (3-(4,5-dimethylthiazol-2-yl)-2,5-diphenyl tetrazolium bromide) with slight modifications (Mosmann, 1983). MCF-7 and T47D cells (2×10^4) were seeded in a 96-well microplate and divided into the untreated and treated group. The medium substituted after

24 hours of incubation with a series of hyptolide concentrations. Cells were treated with hyptolide (1,562–100 $\mu\text{g}/\text{ml}$). Untreated cells were regarded as negative controls. After 24-hour-treatment, the medium was removed and substituted with 0.5 mg/ml of MTT (Biovision) and incubated for approximately four hours at 37°C , 5% CO_2 . Cells were lysed using 10% stopper of sodium dodecyl sulfate containing 0.01 N HCl and incubated overnight in the dark condition to dissolve formazan salt. After incubation, the absorbance was measured by Enzyme-linked Immunosorbent Assay reader plate at λ 550 nm. The absorbance was transformed to % cell viability by comparing the treated group with the untreated at a particular time course. Linear regression between concentration and % viability of cells giving the equation $y = Bx + A$ was used to calculate IC_{50} value, which was the concentration inhibiting 50% cell proliferation.

Proliferation assay

In the experiments of proliferation level measurement, 5×10^4 MCF-7 cells were seeded in 96-well microplate and treated with hyptolide at several concentrations (1,562–100 $\mu\text{g}/\text{ml}$) for 24, 48, and 72 hours before MTT.

Apoptosis assay

MCF-7 cells grown on coverslips determined the apoptosis induction of hyptolide on MCF-7 cells were included in the 24 microplate wells to obtain a density of 5×10^4 cells/wells and incubated until 50%–60% confluent. Cells were incubated with hyptolide for 48 hours. Culture medium was discarded, and cells were washed with Phosphate Buffer Solution. Coverslips were placed into object-glass and added with 10 ml 1x working solution acridine orange (Sigma)-ethidium bromide (Sigma) and then allowed to stand for 5 minutes. Cell immediately fluorescent observed under a microscope (Zeiss MC 80). Apoptosis cells that had lost their integrity of membrane appeared orange and showed morphological features of apoptosis. Cells have been classified as apoptosis based on specific morphological criteria, comprising chromatin condensation and fragmentation, and apoptosis body formation. Living cells fluorescence green (with acridine orange) (Amundson *et al.*, 2000).

Statistical analysis

The data presented the mean \pm standard error of the mean (SE). The statistical analysis was used a one-way analysis of variance followed by the least significant difference test (Excel 2016 software; Microsoft, Redmond, WA). Statistically significant was the p -value less than 0.05.

RESULTS AND DISCUSSION

Results

Isolation of hyptolide from *Hyptis pectinata* (L.) Poit extract

Hyptolide compounds isolated from the leaves of the plant *Hyptis pectinata* (L.) Poit have a melting point of 88°C – 89°C . The melting point of hyptolide does not make much difference from the melting point of the compound hyptolide previously reported that are 88.5°C , 88.5°C , and 87°C – 88°C (Achmad *et al.*, 1987). As we all know the physical constants such as melting points are still used identifying compounds, but many compounds

have the same melting point but different in structure. Infrared spectrophotometer analysis has absorption bands at wave number $1,735\text{ cm}^{-1}$. It is indicating the presence of clusters α,β unsaturated δ -lactone as the basic framework of the compound hyptolide. Strong type at wave number $1,735\text{ cm}^{-1}$ is the carbonyl group in ketones or esters of conjugated. The results of GC-MS analysis are one peak with a retention time of 11.701 minutes and m/z at 239 (approximate of molecular weight of hyptolide). Thus, the isolated compounds are hyptolide with the structure are shown in Figure 1.

Cytotoxic activity of hyptolide on MCF-7 and T47D cells

Cytotoxicity assay was performed to measure the potency of hyptolide-induced cytotoxicity on MCF-7 and T47D cells. The cytotoxic effect of hyptolide was presented the IC_{50} value and was used to determine the dose for other assays. The results showed that the treatment of hyptolide for 24 hours significantly decreased the viability of the cells with the degree of depletion in a dose-dependent manner on the MCF-7 and T47D. However, the cytotoxic effect was stronger on MCF-7 than on T47D with an IC_{50} value of $76.76\text{ }\mu\text{g/ml}$ and $181.55\text{ }\mu\text{g/ml}$, respectively (Fig. 2A). This result suggested that the differential expression of protein marked that involved in the cell growth stimulation is more strongly influenced by hyptolide in MCF-7 cells.

Antiproliferation effect of hyptolide on MCF-7 cells

The cytotoxicity data indicate that MCF-7 is more susceptible to be treated with hyptolide than T47D. Therefore, based on these data, we evaluated the effect of hyptolide on MCF-7 cells with variation in time for treatment. Interestingly, the presence of hyptolide on the medium causes highly suppressed cell proliferation with an IC_{50} value of 63.27 and $33.94\text{ }\mu\text{g/ml}$ for 48 and 72 hours, respectively (Fig. 2B). Therefore, we concluded that hyptolide exhibits strong cytotoxic activity in a dose- and time-dependent manner on MCF-7 cells.

Apoptosis induction by hyptolide on MCF-7 cells

To verify the mechanism underlying the cytotoxic effect of the hyptolide treatment on MCF-7 cells, we conducted apoptosis assay with acridine orange-ethidium bromide (AO/EB) multiple staining. In this research, we used one-eighth, one-fourth, half, and IC_{50} value as the concentration of hyptolide. Based on the apoptosis analysis, cells exposed to hyptolide for 48 hours were capable of inducing apoptosis at dose-dependent manner (Fig. 3). Based on the findings, it was evident that the increasing concentration of hyptolide causes a significant reduction in the number of viable cells. In addition, some cells had typical apoptotic characteristics such as plasma membrane blabbing. However, the number of cells

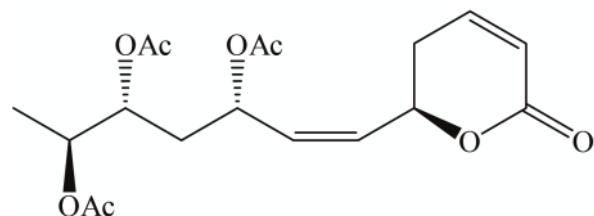


Figure 1. Chemical structures of hyptolide compounds isolated from *Hyptis pectinata*.

stained red increases. This finding suggests that most of the cell deaths occurred primarily through apoptosis.

DISCUSSION

The purpose of this research was to introduce hyptolide as a natural chemotherapeutic agent to inhibit the proliferation of ER-positive breast cancer cells. The concepts of natural chemotherapy are to improve efficacy and reduce the side effects of a chemical chemotherapeutic agent. Hyptolide is among the natural agents that can be potentially developed to be anticancer. However, studies of the anticancer activity of hyptolide have never been attempted. On the other hand, exploration of the anticancer activity of hyptolide extract was reported in several cancer cells. *Hyptis pectinata* extract has been shown to prevent cancer growth in several cancer cells such as MDA-MB-231 (Santana et al., 2019) and HCT-8 cells (Barbosa et al., 2012). However, hyptolide, one of the major isolates compound from *Hyptis pectinata*, has not been observed for cytotoxic activity. Thus, based on this result,

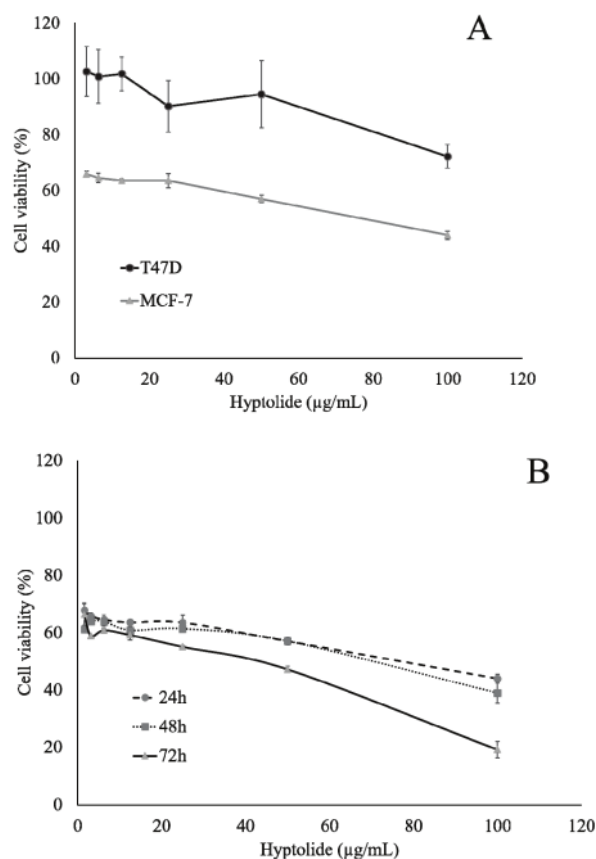


Figure 2. Effect of Hyptolide on the proliferation of MCF-7 and T47D cells. (A) MCF-7 cell (2×10^4 cells/ml) and T47D cell were culture in presence of hyptolide ($3.125 - 100\text{ }\mu\text{g/ml}$) for 24 hours. (B) MCF-7 cell (2×10^4 cells/ml) in 96-well plates for 24 hours to adapt, then treated with hyptolide concentrations of $1.5625 - 100\text{ }\mu\text{g/ml}$, then incubated again for 24, 48, and 72 hours. Profiles of cell viability expressed mean \pm SD of three experiments. IC_{50} obtained from the linear regression calculation of cell viability versus log concentrations with $p < 0.05$.

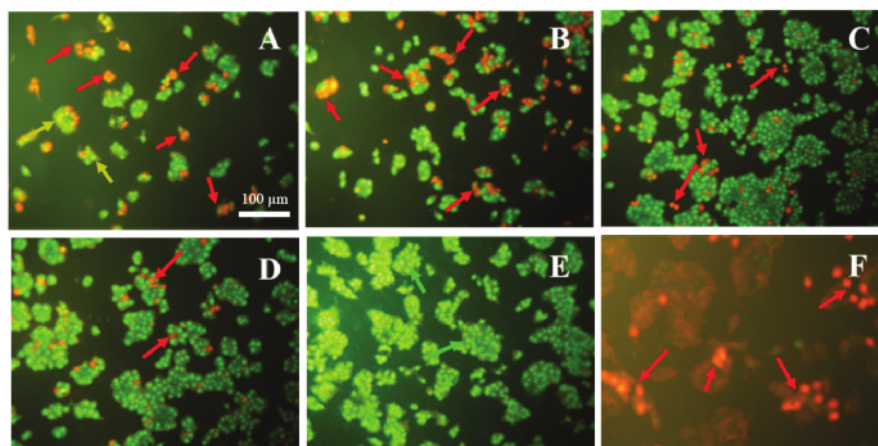


Figure 3. Apoptosis induction of hyptolide on MCF-7 cells. Apoptotic morphology detection by AO/EB fluorescent staining of MCF-7 cells treated with the Hyptolide. A 1 IC_{50} ; b $\frac{1}{2}\text{ IC}_{50}$; c $\frac{1}{4}\text{ IC}_{50}$; d $\frac{1}{8}\text{ IC}_{50}$; e-negative control; f-positive control. Green arrows: live cells, greenish yellow: early apoptotic cells, orange red: late apoptotic cells, red: dead cells (some cells are fragmented and become faded). This figure denotes the results of at least 3 independent experiments (Original magnification $40\times$).

our group had successfully isolated the hyptolide from *Hyptis pectinata* (L.) Poit extract, and we evaluated the cytotoxic activity of hyptolide using MCF-7 and T47D ER-positive human breast cancer cells. First, we tested the cytotoxic activity of hyptolide in different concentrations and incubation time on two models of ER-positive breast cancer cells. The single hyptolide treatment showed the cytotoxic effect on MCF-7 cells with an IC_{50} value of $76.76\ \mu\text{g/ml}$ for 24 hours. We then compared the growth inhibitory actions of hyptolide on another breast cancer cells that is T47D (the ER-positive breast cancer reportedly p53 mutant, while MCF-7 are p53 wild-type) (Holliday and Speirs, 2011). Interestingly, cytotoxicity of hyptolide is more effective in MCF-7 than in T47D cells (IC_{50} $181.55\ \mu\text{g/ml}$) (Fig. 2A). In this study, two types of breast cancer cells showed different responses to treatment with hyptolide. In the same treatment level, $50\ \mu\text{g/ml}$ of hyptolide, cell viability of MCF-7 is lower than T47D. The results suggest that MCF-7 is more susceptible than T47D to be treated with hyptolide. It shows that characteristics of MCF-7 are sensitive to the hyptolide. Perhaps this is due to the effect of ER expression (ER), expression of p53 protein wild type, and over-expression of Bcl-2 one of protein marked on apoptosis (Amundson *et al.*, 2000; Berger *et al.*, 2013; Butt *et al.*, 2000; Li *et al.*, 2004; Ma *et al.*, 2013).

Thus, based on these results, we observed cytotoxicity in time variation on MCF-7 cells. Interestingly, the presence of hyptolide on the medium, for 48 and 72 hours, causes highly suppressed cell proliferation and exhibits strong cytotoxic activity in dose- and time-dependent manner on MCF-7 cells (Fig. 2B). One explanation is that there might be a decrease in cell viability caused by the presence of unfunctional ER, induction of p53 protein and caspase 3 (Amaral *et al.*, 2010; Jamalzadeh *et al.*, 2017; Schüler-Toprak *et al.*, 2017). Another report said that α -tubulin inhibition is also caused by hyptolide treatment related to its activity on cell proliferation (Asy *et al.*, 2019). However, this phenomenon by which hyptolide suppresses cell proliferation

through α -tubulin inhibition causing the induction of tumor suppressor gene p53 should be clarified further.

To obtain a further investigation of the cytotoxicity' mechanism of hyptolide, we observed apoptosis induction of hyptolide by AO/EB multiple staining. AO/EB multiple staining showed that the differential absorption of the AO and EB fluorescent DNA-binding dyes was to determine apoptosis (nonviable) and viable cells. These dyes were used to identify apoptosis cells and to distinguish between cells in the early or late stages of apoptosis stages based on membrane integrity (García-Rodríguez *et al.*, 2013). Early apoptosis cells will have fragmented DNA that gives many green colored nuclei as EB could not penetrate the cells, but chromatin condensation can be visualized as bright green patches in the nuclei. Late apoptosis and necrotic cell DNA would be fragmented and orange-red stained as the EB intercalates into the DNA. Thus, an apoptosis cell will be stained by EB over-whelms AO staining contain a bright orange nucleus. Therefore, using this system one can distinguish between early and late apoptosis cells. Viable cells with intact membranes will have a uniformly stained green nucleus because the AO intercalates into the DNA.

We explored the effect of hyptolide on physiological changes focusing on the profile of apoptosis (Fig. 3). In this study, the treatment of MCF-7 cells with a low concentration (one-eighth IC_{50}) of hyptolide slightly induced apoptosis but did not affect the number of cells grow. In contrast, the high concentration of hyptolide (one IC_{50}) highly induced apoptosis and suppresses cells grow compared to the untreated one. Similar results were performed by previous studies in which reported (Tamura *et al.*, 2009; Usui *et al.*, 2004) that pironetin (have a similar structure with hyptolide) could inhibit the growth of HT1080 and 3Y1 cells by apoptosis induction. The apoptosis induction on ER-positive breast cancer cells is due to the role of ER in inhibiting cell growth (Jenie *et al.*, 2019; Rouhimoghadam *et al.*, 2018). According to this finding, cell viability response that under hyptolide treatment

showed a dose-dependent phenomenon and most of the cell deaths occurred predominantly through apoptosis.

In the present study, we found the mechanism of cell death by hypotolide through apoptosis induction. However, the molecular mechanisms involved in hypotolide-induced inhibition in the progression of cancer cells need to be further explored. Nevertheless, we suggest the use of hypotolide as a novel approach to suppress tumorigenesis by using induced apoptosis mechanism.

CONCLUSION

In the present study, authors have investigated the cytotoxic effect of hypotolide on two types of estrogen-positive human breast cancer cells. The results demonstrated that the cytotoxic effect of hypotolide on MCF-7 is stronger than T47D cells using the MTT assay. Authors also found hypotolide highly suppressed cell proliferation in the dose- and time-dependent manner on MCF-7 cell. This effect was mediated through apoptosis induction by analysis of AO/EB multiple staining assay. More importantly, our findings suggest that hypotolide has the potential to be developed as a natural chemotherapeutic agent with better effects and possibly fewer side effects.

ACKNOWLEDGMENT

We express our gratitude to Fundamental Research Grant Ministry of Research Technology and Higher Education, The Republic of Indonesia who funded this research.

CONFLICT OF INTEREST

The authors declare that there is no conflict of interest relevant to the contents of this article.

REFERENCES

- Achmad S, Hoyer T, Kjaer A, Makmur L, Norrestam R. Molecular and crystal structure of hypotolide, a naturally occurring α,β -unsaturated δ -lactone. *Acta Chemica Scandinavica B* 1987; 41:599–609.
- Amaral JD, Xavier JM, Steer CJ, Rodrigues CMP. Targeting the p53 pathway of apoptosis. *Curr Pharm Des* 2010; 16:2493–503.
- Amundson SA, Myers TG, Scudiero D, Kitada S, Reed JC, Fornace J. An informatics approach identifying markers of chemosensitivity in human cancer cell lines. *Cancer Res* 2000; 60:6101–10.
- Ariazi EA, Jordan VC. Estrogen-related receptors as emerging targets in cancer and metabolic disorders. *Curr Top Med Chem* 2006; 6:203–15.
- Arrigoni-Blank MF, Antonioli AR, Caetano LC, Campos DA. Antinociceptive activity of the volatile oils of *hyptis pectinata* L. Poit. (Lamiaceae) genotypes. *Phytomedicine* 2008; 15:334–9.
- Asy M, Diponegoro U, Suzery M, Diponegoro U. In silico study: the anticancer potency of hypotolide and analogue compounds through mechanism of α -tubulin inhibition. *Int J Pharm Bio* 2019; 243–8.
- Barbosa CV, Aquino PGV, Ribeiro-Junior KAL, Moura FBP, Alexandre-Moreira MS, Sant'Ana AEG, Ferreira JRO, Moraes MO, Pessoa C, Aguiar JS, Silva TG. Cytotoxic and antitumor activities of *hyptis pectinata* (Sambacaitá) extract. *Pharmacologyonline* 2012; 3:70–4.
- Berger C, Qian Y, Chen X. The p53-estrogen receptor loop in cancer. *Curr Mol Med* 2013; 13:1229–40.
- Butt AJ, Firth SM, King MA, Baxter RC. Insulin-like growth factor-binding protein-3 modulates expression of Bax and Bcl-2 and potentiates p53-independent radiation-induced apoptosis in human breast cancer cells. *J Biol Chem* 2000; 275:39174–81.
- Falcao RA, Nascimento PLA, de Souza SA, Silva TMG, de Queiroz AC, Matta CBB, Moreira MS, Camara CA, Silva T. Antileishmanial

Phenylpropanoids from the Leaves of *Hyptis pectinata* (L.) Poit. *J Evidence-Based Complement Altern Med* 2013.

Franzotti EM, Bomfim KBR, Moreno MPN, Marchioro M, Antonioli AR. Antinociceptive and anti-inflammatory effects of the aqueous extract of *Hyptis pectinata* leaves in experimental animals. *J Ethnopharmacol* 2001; 76:81–6.

García-Rodríguez MDC, Carvente-Juárez MM, Altamirano-Lozano MA. Antigenotoxic and apoptotic activity of green tea polyphenol extracts on hexavalent chromium-induced DNA damage in peripheral blood of CD-1 mice: analysis with differential acridine orange/ethidium bromide staining. *Oxid Med Cell Longev* 2013.

Holliday DL, Speirs V. Choosing the right cell line for breast cancer research. *Breast Cancer Res* 2011; 13:215–22.

Hollingsworth AB, Lerner MR, Lightfoot SA, Wilkerson KB, Hanas JS, McCay PB, Brackett DJ. Prevention of DMBA-induced rat mammary carcinomas comparing leuprolide, oophorectomy, and tamoxifen. *Breast Cancer Res Treat* 1998; 47:63–70.

Jamalzadeh L, Ghafouri H, Aghamaali M, Sariri R. Induction of apoptosis in human breast cancer MCF-7 cells by a semi-synthetic derivative of artemisinin: a caspase-related mechanism. *Iran J Biotechnol* 2017; 15:157–65.

Jenie RI, Amalina ND, Ilimawati GPN, Utomo RY, Ikawati M, Khumaira A, Kato JY, Meiyanto E. Cell cycle modulation of CHO-K1 cells under Genistein treatment correlates with cells senescence, apoptosis and ROS level but in a dose-dependent manner. *Adv Pharm Bull* 2019; 9:453.

Kayl AE, Meyers CA. Side-effects of chemotherapy and quality of life in ovarian and breast cancer patients. *Curr Opin Obstet Gynecol* 2006; 18:24–8.

Lewis-Wambi JS, Jordan VC. Estrogen regulation of apoptosis: how can one hormone stimulate and inhibit? *Breast Cancer Res* 2009; 11:206.

Li DQ, Pan LH, Shao ZM. Reversal effects of mifepristone on multidrug resistance (MDR) in drug-resistant breast cancer cell line MCF7/ADR in vitro and in vivo. *Chinese J Cancer Res* 2004; 16:93–8.

Lisboa ACCD, Mello ICM, Nunes RS, Santos MA, Antonioli AR, Marçal RM, Cavalcanti SC. Antinociceptive effect of *Hyptis pectinata* leaves extracts. *Fitoterapia* 2006; 77:439–42.

Ma L, Liu Y, Geng C, Qi X, Jiang J. Estrogen receptor β inhibits estradiol-induced proliferation and migration of MCF-7 cells through regulation of mitofusin 2. *Corrigendum. Int J Oncol* 2013; 42:1993–2000.

Mardela AP, Maneewat K, Sangchan H. Breast cancer awareness among Indonesian women at moderate-to-high risk. *Nurs Heal Sci* 2017; 19:301–6.

Miranda RP, Hernandez L, Villavicencio MJ, Novelo M, Ibarra P. Structure and stereochemistry of pectinolides A-C novel antimicrobial and cytotoxic 5,6-dihydro- α -pyrones from *hyptis pectinata*. *J Nat Prod* 1993; 56:583–93.

Mosmann T. Rapid colorimetric assay for cellular growth and survival: Application to proliferation and cytotoxicity assays. *J Immunol Methods* 1983; 65:55–63.

Paruthiyil S, Parmar H, Kerekatte V, Cuncha GR, Firestone GL, Leitman DC. Estrogen receptor β inhibits human breast cancer cell proliferation and tumor formation by causing a G2 cell cycle arrest. *Cancer Res* 2004; 64:423–8.

Raymundo LJRP, Guilhon CC, Alviano DS, Eline M, Antonioli AR, Cavalcanti SCH, Alves PB, Alviano CS, Fernandes PD. Characterisation of the anti-inflammatory and antinociceptive activities of the *Hyptis pectinata* (L.) poit essential oil. *J Ethnopharmacol*, 2011; 134:725–32.

Rouhimoghadam M, Safarian S, Carroll JS, Sheibani N, Bidkhori G. Tamoxifen-induced apoptosis of MCF-7 cells via GPR30/PI3K/MAPKs interactions: Verification by ODE modeling and RNA sequencing. *Front Physiol* 2018; 9:907.

Roy S, Vadlamudi RK. Role of estrogen receptor signaling in breast cancer metastasis. *Int J Breast Cancer* 2012.

Santana FR, Luna-Dulcey L, Antunes VU, Claudio F, Cominetti MR, Duarte MC, da Silva JA. Evaluation of the cytotoxicity on breast cancer cell of extracts and compounds isolated from *Hyptis pectinata* (L.) poit. *Nat Prod Res* 2019; 1–8.

Sasco AJ. Breast cancer and the environment. *Horm Res* 2003; 60:50.

Schüler-Toprak S, Moehle C, Skrzypczak M, Ortmann O, Treack O. Effect of estrogen receptor β agonists on proliferation and gene expression of ovarian cancer cells. *BMC cancer* 2017; 17:319.

Sinaga ES, Ahmad RA, Shivalli S, Hutajulu SH. Age at diagnosis predicted survival outcome of female patients with breast cancer at a tertiary hospital in Yogyakarta, Indonesia. *Pan Afr Med J* 2018; 31:1–9.

Suzery M, Cahyono B. Jurnal Sains dan matematika evaluation of Cytotoxicity effect of *hyptis pectinata* poit (Lamiaceae) extracts using BSLT and MTT methods. *J Sains dan Matematika* 2014; 22:84–8.

Suzery M, Kusniawati E, Hudiyanti D, Cahyono B. Isolasi senyawa $C_{18}H_{26}O_9$ dari hiptolida hasil isolasi daun *Hyptis pectinata*. *Reaktor* 2012; 14:68–72.

Tacar O, Sriamornsak P, Dass CR. Doxorubicin : an update on anticancer molecular action. *J Pharm Pharmacol* 2013; 65:157–70.

Takimoto BCH, Calvo E. Principles of oncologic pharmacotherapy. *Physician Practice* 2005; 1–16.

Tamura Y, Simizu S, Muroi M, Takagi S, Kawatani M, Watanabe N, Osada H. Polo-like kinase 1 phosphorylates and regulates Bcl-x L during pironetin-induced apoptosis. *Oncogene* 2009; 90:107–16.

5

Tian JM, Ran B, Zhang CL, Yan DM, Li XH. Estrogen and progesterone promote breast cancer cell proliferation by inducing cyclin G1 expression. *Braz J Med Biol Res* 2018; 51:5612.

USDA N. The PLANTS database. National Plant Data Team, Greensboro, NC. 2016.

Usui T, Watanabe H, Nakayama H, Tada Y, Kanoh N, Kondoh M, Asao T, Takio K, Watanabe H, Nishikawa K, Kitahara T. The anticancer natural product pironetin selectively targets Lys352 of α -tubulin. *Chem Biol* 2004; 11:799–806.

WHO. Latest global cancer data: Cancer burden rises to 18.1 million new cases and 9.6 million cancer deaths in 2018. *Int Agency Res Cancer* 2018:13–5.

How to cite this article:

Suzery M, Cahyono B, Amalina ND. Antiproliferative and apoptosis effect of hiptolide from *Hyptis pectinata* poit on human breast cancer cells. *J Appl Pharm Sci*, 2020; 10(02):001–006.

Antiproliferative and apoptosis effect of hyptolide from *Hyptis pectinata* (L.) Poit on human breast cancer cells

ORIGINALITY REPORT

22%

SIMILARITY INDEX

12%

INTERNET SOURCES

15%

PUBLICATIONS

10%

STUDENT PAPERS

PRIMARY SOURCES

- 1 Ma, Li, Yuan Chang, Long Yu, Wenbo He, and Yueping Liu. "Pro-apoptotic and anti-proliferative effects of mitofusin-2 via PI3K/Akt signaling in breast cancer cells", *Oncology Letters*, 2015.
Publication 1%
- 2 Submitted to Universitas Tadulako
Student Paper 1%
- 3 Wang, Jianfang, Myriam Beauchemin, and Richard Bertrand. "Phospho-Bcl-xL(Ser62) influences spindle assembly and chromosome segregation during mitosis", *Cell Cycle*, 2014.
Publication 1%
- 4 profiles.ouhsc.edu
Internet Source 1%
- 5 blog.balimedicaljournal.org
Internet Source 1%
- 6 centralplasma.wordpress.com
Internet Source 1%

| | | |
|----|---|-----|
| 7 | www.nature.com Internet Source | 1 % |
| 8 | www.thieme-connect.com Internet Source | 1 % |
| 9 | Submitted to Handong Global University Graduate School Student Paper | 1 % |
| 10 | jct.araku.ac.ir Internet Source | 1 % |
| 11 | publications-affiliated.scilifelab.se Internet Source | 1 % |
| 12 | Eleni Melliou, Ioanna Chinou. "Chemistry and Bioactivity of Royal Jelly from Greece", Journal of Agricultural and Food Chemistry, 2005 Publication | 1 % |
| 13 | core.ac.uk Internet Source | 1 % |
| 14 | Santana, Michele F., Lucindo J. Quintans-Júnior, Sócrates C. H. Cavalcanti, Makson G. B. Oliveira, Adriana G. Guimarães, Edisleide S. Cunha, Mônica S. Melo, Márcio R. V. Santos, Adriano A. S. Araújo, and Leonardo R. Bonjardim. "p-Cymene reduces orofacial nociceptive response in mice", Revista Brasileira de Farmacognosia, 2011. Publication | 1 % |

| | | |
|----|--|------|
| 15 | 9dok.org Internet Source | 1 % |
| 16 | A. Palmeira, E. Sousa, M. H. Vasconcelos, M. M. Pinto. "Three Decades of P-gp Inhibitors: Skimming Through Several Generations and Scaffolds", <i>Current Medicinal Chemistry</i> , 2012 Publication | 1 % |
| 17 | www.isciii.es Internet Source | 1 % |
| 18 | Submitted to The University of Buckingham Student Paper | 1 % |
| 19 | Layla Al-Nakkash, Brandon Markus, Lyn Batia, Walter C. Prozialeck, Tom L. Broderick. "Genistein Induces Estrogen-Like Effects in Ovariectomized Rats but Fails to Increase Cardiac GLUT4 and Oxidative Stress", <i>Journal of Medicinal Food</i> , 2010 Publication | 1 % |
| 20 | docplayer.net Internet Source | 1 % |
| 21 | Xin Fang, Leilei Guo, Zikang Xing, Lei Shi, Heng Liang, Aiyong Li, Chunxiang Kuang, Bangbao Tao, Qing Yang. "IDO1 can impair NK cells function against non-small cell lung cancer by downregulation of NKG2D Ligand via ADAM10", <i>Pharmacological Research</i> , 2022 Publication | <1 % |

- 22 cancerres.aacrjournals.org Internet Source <1 %
-
- 23 www.koreascience.or.kr Internet Source <1 %
-
- 24 Erna P. Setyowati, Umar Anggara Jenie, Sudarsono ., L. Broto Kardono. "Apoptosis Induction of Bioactive Substance Theonellapeptolide 1d and 1-(Tetrahydro-4-Hydroxy-5-(Hydroxymethyl)Furan-2-yl)-5-Methyl Pyrimidine-2,4(1H,3H)-Dione Isolated from Kaliapsis sp. Sponge Collection from West Bali National Park Indonesia", Journal of Biological Sciences, 2015
Publication <1 %
-
- 25 G. Eijo. "Inhibition of Nuclear Factor-Kappa B Sensitises Anterior Pituitary Cells to Tumour Necrosis Factor- α - and Lipopolysaccharide-Induced Apoptosis : Inhibition of NF- κ B sensitises anterior pituitary cells to apoptosis", Journal of Neuroendocrinology, 08/2011
Publication <1 %
-
- 26 Submitted to Kaohsiung Medical University Student Paper <1 %
-
- 27 May Pui Shan Yeung, Emily Ying Yang Chan, Samuel Yeung Shan Wong, Benjamin Hon Kei Yip, Polly Suk-Yee Cheung. "Hong Kong <1 %

female's breast cancer awareness measure:
Cross-sectional survey", World Journal of
Clinical Oncology, 2019

Publication

28

Nanema, RK. "Etude de la relation phylogénétique entre trois morphotypes de *Solenostemon rotundifolius* (Poir J. K. Morton) originaires du Burkina Faso par les marqueurs microsatellites chloroplastiques (SSRcp)", International Journal of Biological and Chemical Sciences, 2011.

Publication

29

Finny S. Varghese, Esther van Woudenberg, Gijs J. Overheul, Marc J. Eleveld et al. "Berberine and obatoclax inhibit SARS-CoV-2 replication in primary human nasal epithelial cells in vitro", Cold Spring Harbor Laboratory, 2020

Publication

30

Sun-Hye Lee, Bum-Joon Park. "p53 Activation by Blocking Snail : A Novel Pharmacological Strategy for Cancer", Current Pharmaceutical Design, 2011

Publication

31

cebp.aacrjournals.org

Internet Source

32

Submitted to Southwestern Oklahoma State University

<1 %

<1 %

<1 %

<1 %

<1 %

33

Submitted to Georgetown University

Student Paper

<1 %

34

Aghdas Pesaraklu, Tayebeh Radjabian, Seyed Alireza Salami. "Methyl jasmonate and Ag+ as effective elicitors for enhancement of phenolic acids contents in *Salvia officinalis* and *Salvia verticillata*, as two traditional medicinal plants", *South African Journal of Botany*, 2021

Publication

<1 %

35

Submitted to Binus University International

Student Paper

<1 %

36

Ian Ellis. "Chapter 4703 Invasive Carcinoma with Signet Ring Cell Differentiation", Springer Science and Business Media LLC, 2020

Publication

<1 %

37

Submitted to Federal University of Technology

Student Paper

<1 %

38

www.scitepress.org

Internet Source

<1 %

39

In Young Kim, Soon Young Han, Tae Seok Kang, Byung Mu Lee et al. "Pyrethroid Insecticides, Fenvalerate and Permethrin, Inhibit Progesterone-Induced Alkaline Phosphatase Activity in T47D Human Breast

<1 %

Cancer Cells", Journal of Toxicology and Environmental Health, Part A, 2005

Publication

40

Submitted to University of Stellenbosch, South Africa

Student Paper

<1 %

41

Ambika Behera, Shruti Awasthi. " Anticarcinogenic Potentials of Silver Oxide Nanoparticles Synthesized from ", International Journal of Nanoscience, 2022

Publication

<1 %

42

M. A. Malik, P. O'Brien. "Chapter 136147 Organometallic and Metallo-Organic Precursors for Nanoparticles", Springer Science and Business Media LLC, 2005

Publication

<1 %

43

Maria João Valente, Rui Henrique, Vânia Vilas-Boas, Renata Silva et al. "Cocaine-induced kidney toxicity: an in vitro study using primary cultured human proximal tubular epithelial cells", Archives of Toxicology, 2011

Publication

<1 %

44

Martha Thomson, Khaled Al-Qattan, Mohamed H. Mansour, Muslim Ali. " Green Tea Attenuates Oxidative Stress and Downregulates the Expression of Angiotensin II AT Receptor in Renal and Hepatic Tissues of Streptozotocin-Induced Diabetic Rats ",

<1 %

Evidence-Based Complementary and Alternative Medicine, 2012

Publication

45

Mati Nejmi, Saber Boutayeb. "Chapter 3 Cancer Trends and Risk Factors in Morocco", Springer Science and Business Media LLC, 2016

Publication

<1 %

46

Submitted to Taylor's Education Group

Student Paper

<1 %

47

doi.org

Internet Source

<1 %

Exclude quotes On

Exclude matches < 10 words

Exclude bibliography Off

Antiproliferative and apoptosis effect of hyptolide from *Hyptis pectinata* (L.) Poit on human breast cancer cells

GRADEMARK REPORT

FINAL GRADE

/0

GENERAL COMMENTS

Instructor

PAGE 1

PAGE 2

PAGE 3

PAGE 4

PAGE 5

PAGE 6
