

# S. Flow regime analysis of Taylor-Couette

*by* Adhi Kusumastuti

---

**Submission date:** 19-Apr-2020 09:15AM (UTC+0700)

**Submission ID:** 1301252620

**File name:** S.\_Flow\_regime\_analysis\_of\_Taylor-Couette.pdf (934.94K)

**Word count:** 2746

**Character count:** 13940

# Flow regime analysis of Taylor-Couette column for emulsion liquid membrane applications

Cite as: AIP Conference Proceedings 2124, 020047 (2019); <https://doi.org/10.1063/1.5117107>

Published Online: 24 July 2019

Adhi Kusumastuti, Gunawan Muhammad Najibulloh, Nur Qudus, and Samsudin Anis



View Online



Export Citation

## ARTICLES YOU MAY BE INTERESTED IN

[Lab-scale study of passive treatment to treat acidic mine effluent by using limestone and dolomite](#)

AIP Conference Proceedings 2124, 020009 (2019); <https://doi.org/10.1063/1.5117069>

**AIP** | Conference Proceedings

Get **30% off** all  
print proceedings!

Enter Promotion Code **PDF30** at checkout



# Flow Regime Analysis of Taylor-Couette Column for Emulsion Liquid Membrane Applications

Adhi Kusumastuti<sup>1, a)</sup>, Gunawan Muhammad Najibulloh<sup>1, b)</sup>, Nur Qudus<sup>1, c)</sup>, and Samsudin Anis<sup>1, d)</sup>

<sup>1</sup> Faculty of Engineering Universitas Negeri Semarang, Kampus UNNES Sekaran, Gunungpati, 50229 Semarang, Indonesia

<sup>a)</sup>Corresponding author: [adhi\\_kusumastuti@mail.unnes.ac.id](mailto:adhi_kusumastuti@mail.unnes.ac.id)

<sup>b)</sup>[gunawanmn@gmail.com](mailto:gunawanmn@gmail.com)

<sup>c)</sup>[nurqudus@mail.unnes.ac.id](mailto:nurqudus@mail.unnes.ac.id)

<sup>d)</sup>[samsudin\\_anis@mail.unnes.ac.id](mailto:samsudin_anis@mail.unnes.ac.id)

**Abstract.** Study on the application of Taylor-Couette column for emulsion liquid membrane system has been done. To optimise extraction process under TCC, a research to investigate effect of volume ratio of oil to water is of important. Fluid viscosity was examined by varying volume ratio of kerosene to water. TCC was characterised to determine flow regimes, shear stress, and energy loss distribution. Volume ratio of oil to water was varied at 1:1, 1:3, 1:5, and 1:8 while inner and outer cylinders speed were maintained constant at 31.4 and 0 rad/s, respectively. Investigation on the effect of volume ratio of oil to water towards flow regime ended to same flow regime of Turbulence Taylor Vortices (TTV). There was degradation of wall shear stress from  $8.57 \times 10^{-2}$  Pa to  $7.42 \times 10^{-2}$  Pa.

## INTRODUCTION

Emulsion liquid membrane (ELM) was invented to overcome the limitation of liquid-liquid extraction (LLE). The conventional LLE requires separated compartment for extraction and stripping processes. Besides, the need of high volume of solvent as well as further treatment process make this process uneconomical for low solute concentration.

ELM offers simpler system in terms of both equipment and solvent usage. Combination of extraction and stripping in a single step significantly contributes to time and equipment saving [1, 2]. ELM has been applied in the removal of many impurities from wastewater [3-6]. However, ELM is facing problem of emulsion instability [7]. Regarding to this problem, some efforts have been done. Some researchers studied emulsification process to get optimally stable emulsion [8-10]. Emulsion formulation related to the consideration of chemical type and concentration while emulsification method refers to operating parameters in emulsification include time, speed, frequency, and tool. It is believed that smaller emulsion provides larger contact area and better stability. Ultrasound emulsification produced tiny emulsion as revealed by some researchers [7, 8, 10]. However too stable emulsion could lower extraction efficiency and rate [11]. Among the available method to overcome the emulsion instability problem is the application of TCC for extraction process. TCC consists of two cylinders, rotate in same or opposite direction. In TCC, solution is flowed in the gap of two cylinders. TCC provides higher extraction efficiency since mass transfer occurs along the cylinder. Moreover, this system has about 45 times lower shear stress than that of conventional stirred tank [12] that almost nullify membrane breakage and emulsion swelling which in turn increase extraction efficiency. Another advantage of TCC is shorter process time.

Some studies related to application of Taylor-Couette flow have been done, i.e. turbulence flow [13], dilute polymer solution [14], and mixing process [15]. Taylor-Couette flow have also been applied to increase the performances of plasma filtration [16], extraction [12], bioreactor for animal cell culture [17], vortex bioreactor [18],

and ELM process [19]. Application of TCC for extraction process is affected by liquid viscosity, as ELM employs emulsion in the process. Fluid viscosity could determine the resistance to shear stress. Moreover, cylinders rotation also determines Reynolds number. To optimise extraction process under TCC, a study to investigate effect of volume ratio of oil to water was done. Fluid viscosity was examined by varying volume ratio of kerosene to water. TCC was characterised to determine flow regimes, shear stress, and energy loss distribution.

## THEORY

Characterisation of flow regimes in TCC was done by Andereck et al. [20] by mapping out flow patterns of the inner and outer cylinders in different rotation rates. The mapping of flow patterns was carried out based on Reynolds number of outer and inner cylinders. There were 18 principles regimes of flow pattern between independently rotating cylinders, as given in Fig. 1. Schematic diagram of TCC is given in Fig. 2.

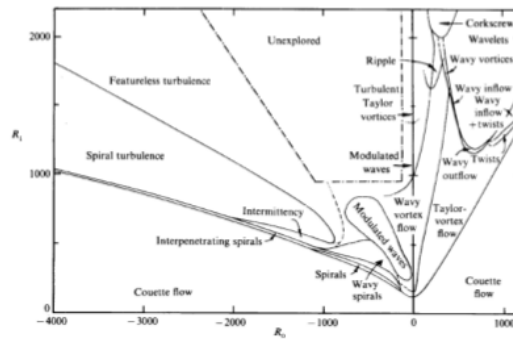


FIGURE 1. Regimes observed in flow between independently rotating cylinders [20]

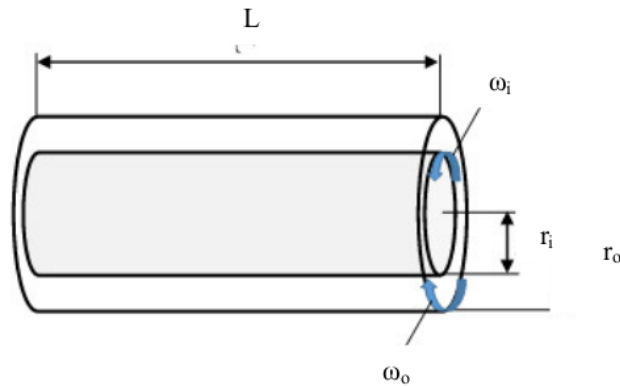


FIGURE 2. Regimes observed in flow between independently rotating cylinders

Some control parameters were taken into account for TCC characterisation with two rotating cylinders as described below [12, 20]. Radius ratio,  $\eta$  is determined by:

$$\eta = \frac{r_i}{r_o} \quad (1)$$

$r_i$  and  $r_o$  are radii of inner and outer cylinder, respectively. Aspect ratio,  $\Gamma$  can be defined by:

$$\Gamma = \frac{L}{d_G} \quad (2)$$

$L$  is the length of fluid column, while  $d_G$  is gap width, can be calculated as  $r_o - r_i$ . Reynolds numbers of inner and outer cylinder are as follow:

$$Re_i = \frac{(r_i \omega_i d_G)}{v} \quad (3)$$

$$Re_o = \frac{(r_o \omega_o d_G)}{v} \quad (4)$$

where

$Re_i$  and  $Re_o$  : Reynolds number of inner and outer cylinder, respectively

$\omega_i$  and  $\omega_o$  : angular velocity of inner and outer cylinder, respectively

$v$  : kinematic viscosity

The angular velocity of inner cylinder ( $\omega_i$ ) is always defined as positive, whereas the angular velocity of outer cylinder ( $\omega_o$ ) can be either positive (for co rotating system) or negative (for counter rotating system). Another dimensionless control parameter of the system is the ratio of angular velocities, i.e.:

$$\Psi = -\frac{\omega_o}{\omega_i} \quad (5)$$

Taylor number is also dimensionless number used to characterise this system. Later stability of Taylor-Couette flow can be described using this number. Taylor number can be defined as [21]:

$$Ta = \frac{1}{4} \sigma (r_o - r_i)^2 (r_o + r_i)^2 (\omega_i - \omega_o)^2 v^{-2} \quad (6)$$

where  $\sigma$  is:

$$\sigma = \left( \frac{(1 + \eta)/2}{\sqrt{\eta}} \right)^4 \quad (7)$$

To represent profile of velocity along the cylinder gap,  $Vt$  is defined by:

$$Vt = Ar + \frac{B}{r} \quad (8)$$

$r$  varies from  $r_i$  to  $r_o$ , while  $A$  and  $B$  can be calculated by:

$$A = \omega_i \frac{(\eta^2 - \Psi)}{\eta^2 - 1} \quad (9)$$

$$B = \omega_i r_i^2 \frac{(1 - \Psi)}{1 - \eta^2} \quad (10)$$

Estimation for wall shear stress can be done by using following equation:

$$\tau = -2\mu \frac{B}{r_i^2} \quad (11)$$

The energy loss along the gap width under counter rotating of inner and outer cylinders can be determined as [22]:

$$\frac{dH}{ds} = 4\mu \frac{\omega_i r_i}{h^2} \frac{r_i^4}{r^4} \frac{(1-\eta)^2}{\eta^2} \frac{(1-\Psi)^2}{(1-\eta^2)^2} \left[ \frac{\eta^2 - \Psi}{\eta^2 - 1} \frac{r}{r_i} + \frac{r_i}{r} \frac{1 - \Psi}{1 - \eta^2} \right]^{-1} \quad (12)$$

## EXPERIMENTAL

Deionised water was used for all of the solutions preparation. Commercial grade kerosene was employed. Kerosene and deionised water was mixed at volume ratio of 1:1, 1:3, 1:5, and 1:6. Study on the effect of speed rotation was done at outer cylinder and inner cylinder speed of 0 and 31.4 rad/s, respectively. For each variation, fluid viscosity was measured [12] and flow pattern was visualised. Characterisation of Taylor-Couette flow was carried out by calculating Reynolds number, Taylor number, shear stress, and energy loss distribution.

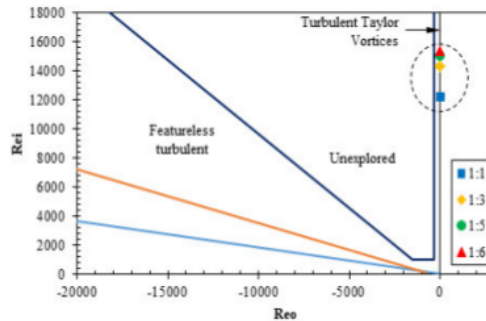
### Characterisation

The developed TCC system has  $R_i$ ,  $R_o$  and  $L$  of 2.4 cm, 4.0 cm and 15 cm, respectively, thus result in  $\eta$  and  $\Gamma$  to be 0.6 and 9.375, respectively. This dimension provides total gap volume that can be used for extraction process of about 482.5 mL. Reynolds number of both outer and inner cylinders could be determined by measuring fluid kinematic viscosity.

Varying volume ratio of oil to water resulted in kinematic viscosity of  $9.8 \times 10^{-7}$ ,  $8.4 \times 10^{-7}$ ,  $8 \times 10^{-7}$ , and  $7.9 \times 10^{-7}$  m<sup>2</sup>/s, respectively. In all experiments investigated, the outer and inner cylinders were rotated at a constant speed of 0 and 31.4 rad/s. The negative sign indicated that the outer cylinder rotated at opposite direction of inner cylinder rotation (counter rotation).

## Flow Regime

In this study, flow regime was investigated as the effect of volume ratio of oil to water. It was found that decreasing volume ratio of oil to water from 1:1 to 1:6 gave a decrease in kinematic viscosity thus lowering the flow resistance. Investigation on the effect of volume ratio of oil to water towards flow regime ended to same flow regime of Turbulence Taylor Vortices (TTV). It was due to insignificant difference of kinematic viscosity for each volume ratio. Mathematically, the increase of fluid viscosity will linearly decrease Reynolds number. Some studies showed that flow pattern of fluids were significantly affected by fluid viscosity [23, 24].



**FIGURE 3.** Flow regime in Taylor-Couette column (outer cylinder rotation: 0 rad/s; inner cylinder rotation: 31.4 rad/s; volume ratio of oil to water: 1:1, 1:3, 1:5, 1:6)

Flow pattern of laminar Couette in a Taylor-Couette flow system will run into transition to Taylor vortex flow when cylinder rotation is increase to certain number [25]. The obtained Reynolds numbers of outer and inner cylinders were converted into graph by mapping flow pattern as given by Andereck et al. [20] in Fig. 3.

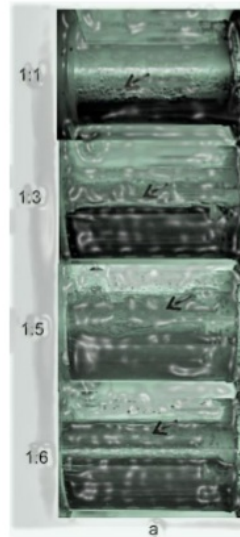
Study of Ahmad et al. [12] supported this finding. Using radius ratio  $\eta = 0,571$ , the study underwent TUR (Featureless Turbulent Flow) and TTV (turbulent Taylor vortices). While this current study applying radius ratio of 0.6 provided TTV (turbulent Taylor vortices). Some researchers found this flow pattern in their studies. Wu and Andereck [26] revealed that the phase dynamics of the coherent structure were described by a diffusion model with a diffusion coefficient an order of magnitude larger than for the laminar Taylor vortex flow. Tsukahara et al. [27] observed the presence of TTV in the flow field and in the cases of rib-roughened inner cylinders. For more details, data from each flow type mapping is given in Table 1.

**Table 1.** Flow regime of each volume ratio of oil to water (O/W)

Outer Cylinder Speed (rad/s)	Inner Cylinder Speed (rad/s)	Volume Ratio			
		1:1	1:3	1:5	1:6
0	31.4	TTV	TTV	TTV	TTV

## RESULTS AND DISCUSSION

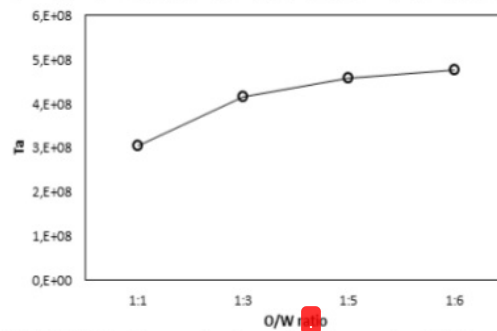
Using different volume ratio, it was found that volume ratio gave no effect to the flow regime. However, the same flow regime given by different volume ratio caused various turbulent flows due to the difference of bubbles spread. This is due to the boundary of kerosene and water was located in different level thus the rotation resulted in different forces. Figure 4 shows the flow pattern of each volume ratio produced by camera setting of ISO-6400, 1/500 exposure time, +5 exposure bias, and f/5.3 F-Stop.



**FIGURE 4.** Flow pattern in each volume ratio (outer cylinder rotation: 0 rad/s; inner cylinder rotation: 31.4 rad/s; volume ratio of oil to water: 1:1, 1:3, 1:5, 1:6)

### Taylor Number and Shear Stress

Ahmad et al.[12] revealed the increment of Taylor number by the increase of counter rotated cylinders speed compared to that of co rotated cylinders. Counter rotation cylinders provide higher Taylor number by using lower rotation speed. Taylor number is non-dimensional number that determines Taylor-Couette flow pattern by characterising the importance of centrifugal force by fluid rotation, relative to viscous force. Taylor number for each volume ratio of oil to water is given in Figure 5. It can be observed that Taylor number increase as the decrease of volume ratio of oil to water. The increment was due to the decrease of fluid viscosity.



**FIGURE 5.** Taylor number for each volume ratio of oil to water

Further study in Taylor-Couette system characterisation was done to wall shear stress. It is known that wall shear stress is equal and opposite to that of fluid shear stress. Effect of volume ratio of oil to water on the wall shear stress is described in Figure 6. It is seen in Figure 6 that wall shear stress has negative value, showing that its direction was opposite to the fluid flow direction as the result of counter rotated cylinders. The figure reveals the decrease of wall shear stress with the reduction of volume ratio of oil to water. At volume ratio of oil to water of 1, the highest shear stress of  $8.57 \times 10^{-2}$  Pa was obtained. While at the lowest volume ratio of oil to water of 1/6, the lowest wall shear stress of  $7.42 \times 10^{-2}$  Pa was achieved. This result indicates the degradation of about 13% under the investigated conditions.

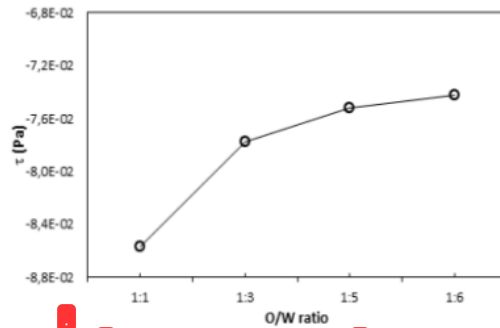


FIGURE 6. Wall shear stress for each volume ratio of oil to water (outer cylinder rotation: 0 rad/s; inner cylinder rotation: 31.4 rad/s; volume ratio of oil to water: 1:1, 1:3, 1:5, 1:6)

Figure 7 presents distribution of energy loss along the gap width for variation of volume ratio of oil to water under counter rotating of inner and outer cylinders. Investigation was carried out in the aspect and radius ratios of 9.375 and 0.6, respectively. In this study, inner cylinder rotated while the outer cylinder was at rest, it can be seen that the energy loss distribution for volume ratio of 1/3, 1/5, and 1/6 was almost the same. The highest energy loss distribution was achieved by the system with volume ratio of oil to water of 1. This is due to higher fluid viscosity leads to higher energy loss thus delay fluid instability. Fluid viscosity could determine energy loss in the flow thus affects the efficiency of the fluid transportation. But in some cases, flow stability could be enhanced by energy loss [28].

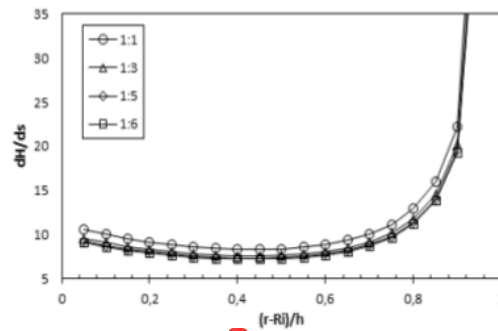


FIGURE 7. Energy loss distribution (outer cylinder rotation: 0 rad/s; inner cylinder rotation: 31.4 rad/s; volume ratio of oil to water: 1:1, 1:3, 1:5, 1:6)

## CONCLUSION

TCC characterisation was carried out by varying effect of volume ratio of oil to water. Flow regimes, shear stress, and energy loss distribution were determined. Investigation on the effect of volume ratio of oil to water towards flow regime resulted in flow regime of Turbulence Taylor Vortices (TTV). Reduction of wall shear stress increased from  $8.57 \times 10^{-2}$  Pa to  $7.42 \times 10^{-2}$  Pa by the decrease of volume ratio of oil to water. System with volume ratio of oil to water of 1 was able to achieve the highest energy loss distribution.

## ACKNOWLEDGMENTS

Competency-based research grant from Ministry of Research, Technology, and Higher Education of Indonesia is gratefully acknowledged.



## REFERENCES

1. A.L. Ahmad, et al., *Jurnal Teknologi*, **65**, 17–24 (2013).
2. A.L. Ahmad, et al., *Journal of Water Process Engineering*, **15**, 26-30 (2017).
3. A.L. Ahmad, et al., *Membrane Water Treatment*, **4**, 15 (2013).
4. A.L. Ahmad, et al., *Desalination and Water Treatment*, **57**, 28274 - 28283 (2016).
5. T.A. Razo-Lazcano, et al., *Colloids Surf. Physicochem. Eng. Aspects*, **536**, 68-73 (2018).
6. H.P. Kohli, S. Gupta, and M. Chakraborty, *Colloids Surf. Physicochem. Eng. Aspects*, **539**, 371-381 (2018).
7. A.L. Ahmad, et al., *Desalination*, **287**, 30-34 (2012).
8. M. Chiha, et al., *Ultrason. Sonochem.*, **17**, 318-325 (2010).
9. Y. Wan, et al., *J. Membr. Sci.*, **184**, 49-57 (2001).
10. M. Djenouhat, et al., *Sep. Purif. Technol.*, **62**, 636-641 (2008).
11. A.L. Ahmad, et al., *Chem. Eng. J.*, **171**, 870-882 (2011).
12. A.L. Ahmad, et al., *Sep. Purif. Technol.*, **127**, 46-52 (2014).
13. D.P. Lathrop, J. Fineberg, and H.L. Swinney, *Phys. Rev. Lett.*, **68**, 1515-1518 (1992).
14. C.S. Dutcher and S.J. Muller, *J. Rheol.*, **55**, 1271-1295 (2011).
15. M. Nemri, S. Charton, and E. Climent, *Chem. Eng. Sci.*, **139**, 109-124 (2016).
16. B. G and J. Michell, *Artif Organs*, **13**, 43-51 (1989).
17. B. Haut, et al., *Chem. Eng. Sci.*, **58**, 777-784 (2003).
18. M. Ramezani, et al., *Chem. Eng. J.*, **279**, 286–296 (2015).
19. Y. Park, et al., *Chem. Eng. Sci.*, **59**, 5725-5734 (2004).
20. C.D. Andereck, S.S. Liu, and H.L. Swinney, *J. Fluid Mech.*, **164**, 155-183 (1986).
21. D.P.M. van Gils, et al., *J. Fluid Mech.*, **706**, 118-149 (2012).
22. H.-S. Dou, B.C. Khoo, and K.S. Yeo, *International Journal of Thermal Sciences*, **47**, 1422-1435 (2008).
23. T. Furukawa and T. Fukano, *Int. J. Multiphase Flow*, **27**, 1109-1126 (2001).
24. R.S. Boogar, R. Gheshlaghi, and M.A. Mahdavi, *Korean J. Chem. Eng.*, **30**, 45-49 (2013).
25. Sarip, *Majalah Ilmiah STTR Cebu*, **15**, 31-35 (2012).
26. M. Wu and C.D. Andereck, *Physics of Fluids A: Fluid Dynamics*, **4**, 2432-2445 (1992).
27. T. Tsukahara, M. Ishikawa, and Y. Kawaguchi, *Advances in Mechanical Engineering*, **2013**, 12 (2013).
28. H.-S. Dou, B.C. Khoo, and K.S. Yeo, *International Journal of Thermal Sciences*, **46**, 262-275 (2007).

# S. Flow regime analysis of Taylor-Couette

---

## ORIGINALITY REPORT

---

**22%**

SIMILARITY INDEX

**5%**

INTERNET SOURCES

**20%**

PUBLICATIONS

**5%**

STUDENT PAPERS

---

## MATCH ALL SOURCES (ONLY SELECTED SOURCE PRINTED)

---

8%

★ Luo, M.. "Desulfurization of dibenzothiophene by lyophilized cells of *Pseudomonas delafieldii* R-8 in the presence of dodecane", *Biochemical Engineering Journal*, 200301

Publication

---

Exclude quotes      On

Exclude matches      Off

Exclude bibliography      On