

Polymorphism of Glutamate-Cysteine Ligase Subunit Catalytic (GCLC) Gene in Pulmonary Tuberculosis Patients

by Ari Yuniastuti

Submission date: 18-Sep-2019 06:48AM (UTC+0700)

Submission ID: 1174739446

File name: 1._2017-Pakistan_Journal_of_Biological_Science_397-402.pdf (661.43K)

Word count: 3523

Character count: 18952

<http://www.pjbs.org>

PJBS

ISSN 1028-8880

**Pakistan
Journal of Biological Sciences**

ANSI*net*

Asian Network for Scientific Information
308 Lasani Town, Sargodha Road, Faisalabad - Pakistan



Research Article

Polymorphism of Glutamate-Cysteine Ligase Subunit Catalytic (GCLC) Gene in Pulmonary Tuberculosis Patients

¹Ari Yuniastuti, ¹R. Susanti and ²Dewi Mustikaningtyas

¹Laboratory of Biochemistry and Molecular Biology, Department of Biology, Faculty of Mathematics and Natural Science, Universitas Negeri Semarang, 50229 Semarang, Central Java, Indonesia

²Laboratory of Microbiology, Department of Biology, Faculty of Mathematics and Natural Science, Universitas Negeri Semarang, 50229 Semarang, Central Java, Indonesia

Abstract

Background and Objective: The biomarker of oxidative stress in pulmonary tuberculosis patients has not been found. Oxidative stress occurs due to the low level of antioxidants. Single nucleotide polymorphism of glutamate-cysteine ligase subunit catalytic (GCLC) gene namely -129C/T GCLC has been reported to have an association with a risk factor of oxidative stress' susceptibility. The Objective of this study was to determine the GCLC polymorphism in pulmonary tuberculosis (TB) patient. **Materials and Methods:** Blood samples of 225 pulmonary TB patients were taken from the central public health in Semarang city. The genetic test was carried out using polymerase chain reaction-restriction fragment length polymorphism (PCR-RFLP). The isolation of DNA from 225 blood samples was performed using DNA extraction kit (Promega DNA purification kit) following the manufacturing procedure. The amplification of GCLC fragment was performed by a master mix from Thermo Scientific. Data was analyzed descriptively. Statistical analysis was performed by Chi-square test. **Results:** The results showed the existence of polymorphism-129C/T in the 5'-flanking region of GCLC genes. The frequency of C/C and C/T genotype were 63.6 and 36.4%, respectively. The C/T gene in the GCLC -129 region is a T gene promoter. There was a significant difference between C/C and C/T frequencies with the value of significance of $p = 0.000$ ($p < 0.05$). **Conclusion:** Therefore it was concluded that the frequency of C/T polymorphism genotype of GCLC gene in patients with pulmonary tuberculosis is 36.4%.

Key words: Gene polymorphism, GCLC gene, GCL enzyme, pulmonary TB, glutathione, -129C/T GCLC

Citation: Ari Yuniastuti, R. Susanti and Dewi Mustikaningtyas, 2017. Polymorphism of glutamate-cysteine ligase subunit catalytic (gclc) gene in pulmonary tuberculosis patients. Pak. J. Biol. Sci., 20: 397-402.

Corresponding Author: Ari Yuniastuti, Laboratory of Biochemistry and Molecular Biology, Department of Biology, Faculty of Mathematics and Natural Science, Universitas Negeri Semarang, 50229 Semarang, Central Java, Indonesia Tel: +628156615624

Copyright: © 2017 Ari Yuniastuti *et al.* This is an open access article distributed under the terms of the creative commons attribution License, which permits unrestricted use, distribution and reproduction in any medium, provided the original author and source are credited.

Competing Interest: The authors have declared that no competing interest exists.

Data Availability: All relevant data are within the paper and its supporting information files.

INTRODUCTION

Glutamate cysteine ligase (GCL) catalytic subunit is a monomer of GCL gene. Glutamate cysteine ligase is an enzyme that catalyzes the formation of glutathione (GSH). Glutathione is one of the antioxidants that play a role in the regulation of the immune system and direct antimicrobial effect by improving the immunity and inhibiting the growth of *Mycobacterium tuberculosis*¹⁻³.

Gene polymorphism in enzymes that synthesize glutathione affects glutathione levels^{4,5} and is associated with impaired lung function^{6,3,7}.

Glutathione (γ -glutamylcysteine glycine) is a tripeptide composed of glutamate, cysteine and glycine. Glutathione synthesis is through two stages, each catalyzed by a different enzyme. In phase I, the formation of the dipeptide γ -glutamyl cysteine is catalyzed by the enzyme glutamate-cysteine ligase (GCL). The II phase involves glutathione synthesis from γ -glutamyl cysteine and glycine, a reaction catalyzed by the enzyme glutathione synthetase (GSS)⁸. The enzymes that synthesize glutathione are genetically expressed by the sequence of genes that make up a protein enzyme. GCL enzyme has two components in each of its heterodimer structure, that is, the catalytic subunits (GCLC) and the modulator subunits (GCLM). GCLC and GCLM genes encode both subunits⁹.

Polymorphism occurs when two or more clearly different phenotypes are present in the same population of a species. In other words, polymorphism is the presence of more than one form of morphism in the same habitat at the same time. Usually, adaptation and genetic variation are used to store various morphisms in a population living in different environments.¹⁰ Hence, polymorphism is the result of an evolutionary process and can be genetically inherited and modified by natural selection.

Several studies suggest that genetic polymorphisms in GCLC and GCLM genes are associated with low levels of reduced glutathione (GSH) *in vitro* and lead to susceptibility to certain diseases¹¹⁻¹⁵. Polymorphisms resulting from the expression and enzyme activity of GCL were significantly reduced and phenotype shows the severity of the disease. Research conducted by Yuniastuti and Dewi¹⁶ found that there is GCL gene polymorphism in pulmonary TB patient at 30%. TB patients with suspected GCL gene polymorphism are more susceptible to oxidative stress, thus exacerbating the disease. So, this study was conducted to analyze the polymorphism of glutamate-cysteine ligase subunit catalytic gene (GCLC) in pulmonary tuberculosis patients.

MATERIALS AND METHODS

This study was conducted on March-November, 2013. The grading of solution used in this study was commercial grading. Materials used in this study were: Peripheral blood sample of pulmonary TB patients, MgCl₂, methanol+BHT 0.05%, Chloroform: Methanol+BHT+TPP, ethyl acetate, heptane, deionized water pH 3, KOH 15%, PBS (Phosphate Buffer Saline) 1×1 mL, Chelex 20% 50 μ L, sterile water, Hot Master Mix Kit Cat Number 203443, primer GCLC forward 5'TCGTCCCAAGTCTCACAGTC-3' reverse 5'CGCCCTCCCCGCTGCTCCTC-3', *Tsp451* enzyme with cutting region at 5'...-▼GTSAC...3' with complement side at 3'...CASTG...5'.

Sample collection: Blood samples were obtained from the center for central public health in Semarang by consecutive non-probability sampling¹⁷.

All patients who fulfilled the inclusion and exclusion criteria, were willing to participate in the study and signed the informed consent form were recruited as research subjects. The cohort consisted of 225 patients with pulmonary tuberculosis.

DNA extraction: The first step of DNA examination was DNA extraction process. The method of DNA extraction used was by Chelex¹⁸.

Polymerase chain reaction-restriction fragment length polymorphism (PCR-RFLP): Genomic DNA was isolated from the leukocyte-rich buffy coat layer of peripheral venous blood using a QIAamp DNA Blood Mini Kit (Qiagen, Valencia, CA). DNA fragments of the GCLC were genotyped for the polymorphisms by PCR and amplified with the following primers, (forward) 5'TCGTCCCAAGTCTCACAGTC-3' and (reverse) 5'CGCCCTCCCCGCTGCTCCTC-3'. PCR was performed in a 25 μ L reaction mixture, containing 10X PCR buffer, KAPA 2G robust start ready mix 12.5 μ L, 10 mmol of each dNTP, ddH₂O 7.5 μ L, primer forward 1.5 μ L, primer reverse 1.5 μ L, 3 U μ L⁻¹ of Taq polymerase and 2.0 μ L of genomic DNA sample. The cycling conditions were pre-denaturation at 94°C for 5 min., denaturation at 94°C for 30 sec., annealing at 56.1°C for 45 sec., extension at 72°C for 2 min and a final extension at 72°C for 5 min. The cycle was repeated for 35 times. The Magnitude of the expected PCR products was 613 base pairs (bp).

The PCR fragments of the GCLC genes were analyzed by RFLP, with digestion of the fragments with *Tsp451* (Thermo Scientific, Lithuania) restriction enzyme, which was 5'...-▼

GTS...3' with the complement of the 3'...CASTG▲...5'. Ten μL of PCR product was digested with 1 μL of FastDigest *Tsp451* restriction enzyme at 37°C for 5 min. The restriction fragments were subjected to electrophoresis on 2% agarose/ethidium bromide gel in 1× TBE buffer (0.09 M Tris-boric acid and 0.002 M EDTA). Gels were visualized under UV light and documented in Molecular Imager apparatus (BIO-RAD). The cleaved fragments were separated by electrophoresis on 2.0% agarose gel in 1× TBE buffer (89 mM Tris-HCl, 2.5 mM EDTA and 89 mM boric acid pH 8.3) containing 0.05 $\mu\text{g mL}^{-1}$ ethidium bromide at 75 V for 2 h.

PCR-RFLP amplification of GCLC gene: After the process of amplification, the electrophoresis was conducted using agarose gel 1.2%. It was made by dissolving 1.2 g of agarose into 100 mL 0.5X buffer TBE in Erlenmeyer flask which subsequently was heated until it became transparent. Then it was cooled until a lukewarm condition. Five μL of ethidium bromide (10 mg mL^{-1}) was added to the solution then it is molded using the tray that has been prepared before. Then the gel was put in an electrophoresis tank. 0.5x buffer TBE (108 g Tris base, 55 g Borate and 40 mL EDTA 0.5 M) was poured into the tank up to about 1 mm above the surface of the gel. After that, 3 μL PCR products were added to gel's sink. Electrophoresis tank was closed down and connected to the power supply at 100 V for 30 min. The result of PCR product's electrophoresis was observed using a gel doc¹⁸. The bands were visualized under ultraviolet light in a gel doc system (Thermo Scientific).

Statistical analysis: Chi-square was used to examine the difference between the wild type and the polymorphism gene

of GCLC gene. Statistical analysis program used was Social Science (SPSS) software (version 20.0 for Windows, IBM Corp., NY, Armonk) with confidence interval at 95% and significance value at $p \leq 0.05$ ¹⁹.

RESULTS

Molecular approaches were conducted using the polymerase chain reaction-fragment length polymorphism (PCR-RFLP) method. The restriction site of enzyme *Tsp451* lies outside the recognition site, 5' to the G residues in each strand. PCR-RFLP results of GCLC gene cut by the restriction enzyme *Tsp451* shows the shape of the genotype (Fig. 1). The differences of nucleotide were found at -129 promoter regions of genes GCLC. According to the sequencing analysis, the sequences GTGAC corresponded to the promoter region of GCLC Gene Bank. Since GTCAC turned into this position, it was recognized by the restriction enzyme *Tsp451* as a cleavage site.

The -129C/C, -129C/T and -129T/T genotype frequencies were then examined by the Chi square test. The result showed that there was a significant different between C/C and C/T frequencies with the value of significance of $p = 0.000$ ($p < 0.05$). Hereafter, the calculation of allele frequencies was performed in order to get the proportion or percentage of the C or T allele on the loci of GCLC gene. The result of the allele percentage calculation can be used to determine the characteristic of the loci. A locus can be said as a polymorphic locus if the highest allele frequency is less or equal to 0.95. In the other hand, a locus can be said as a monomorphic locus if the highest allele frequency is more than 0.95.

Chisquare test results indicated that there were significant differences between the C/C genotype with C/T genotype of

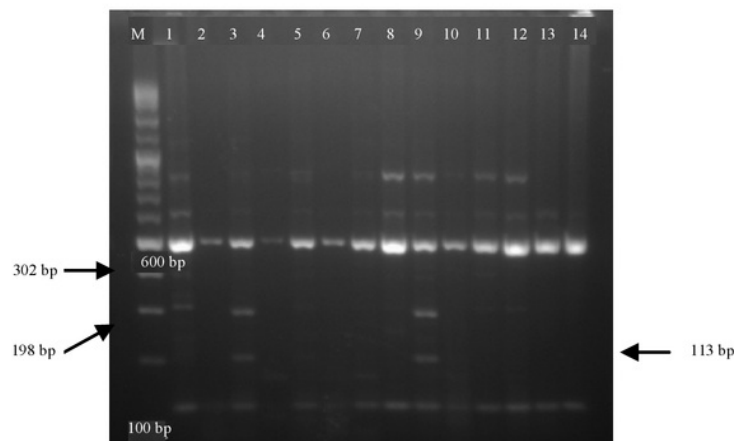


Fig. 1: Electrophoresis of PCR-RFLP products of GCLC gene

15
Table 1: C and T allele frequency of GCLC gene

Indicator	Genotype			Total	Frequency of gene
	15 CC	CT	TT		
Number of individual	143	82	0	225	
Number of C gene	286	82	0	368	368/450 = 0.82
Number of T gene	0	82	0	82	82/450 = 0.18
Number of gene total	286	164	0	450	

Table 2: Expectation and real gene frequency

Genotype	Frequency of expectation genotype	Number of individual = 225	
		Expectation	Reality
CC	$p^2 = (0.82)^2 = 0.67 \times 225$	150.75	143
CT	$2pq = 2(0.82)(0.18) = 0.295 \times 225$	66.38	82

27
GCLC gene with a significance p-value of 0.000 ($p < 0.05$). Furthermore, in order to determine the proportion of allele C or T in GCLC gene loci, the allele frequency calculation was performed (Table 1). The allele frequency calculation results were used to determine the nature of the loci alleles located. A locus is said to be polymorphic if the frequency of an allele is similar to or less than 0.95. However, a locus is said to be monomorphic if its allele has a greater frequency than 0.95.

The results of the C allele frequency calculations in this study were 82 and 18% T allele, thus is polymorphic loci. The proportion of polymorphic loci in a population is often used as an index of genetic diversity. In other words, the C allele contributes 82% to the rest of the GCLC gene activity while the role of T allele is 18%. Furthermore, the predicted genotype frequency expectations from the real genotype frequencies are given in Table 2. Given in a sexually reproducing population, each member of the population is expected to conduct random mating. In this kind of arrangement, each genotype and phenotype have the opportunity to meet one another and be passed on to the next generation.

DISCUSSION

14
Polymorphism -129 C/T in GCLC gene pulmonary TB patients are likely to respond differently to oxidative stress and OAT therapy when compared with patients with no GCLC polymorphism gene. If there is a polymorphism in pulmonary TB patients, such patients are susceptible to oxidative stress which manifests on the severity of pulmonary TB diseases such as pulmonary fibrosis and lung cancer. 45
37
Polymorphism -129 C/T suppress the increase in GCLC gene expression in response to oxidative stress and it is likely to weaken the activity of the enzyme to synthesize intracellular GSH in response to oxidative stress. Liu *et al.*²⁰ reported that polymorphisms -129/T in the promoter region of genes GCLC

induce different responses to oxidants and reduce the production of glutathione. This leads to lower antioxidant capacity in lung cells and lead to increased susceptibility to oxidant injury in chronic obstructive pulmonary disease (COPD). 36

Glutathione is synthesized from its constituent amino acids in two sequential by GCL and GSH synthetase⁹. 5
Glutamylcysteine, synthesized by GCL is rapidly converted to GSH by GSH synthetase. Glutamate-cysteine ligase is the rate-limiting enzyme in GSH synthesis, whereas GSH synthetase had apparently no regulatory role. When cells are challenged with sublethal oxidative stress or GSH depletion, GCLC gene expression was regulated through upward activation of oxidative stress-responsive elements in the promoter regions. This leads to GSH synthesis and provides a protective/adaptive mechanism against oxidative stress¹⁵.

The previous study showed that the -129C/T polymorphism may suppress the increase of GCLC gene expression in response to oxidative stress²⁰. The existence of -129 8
T polymorphism found in this study indicated that it is also possibly weaken the intracellular production of GSH in response to oxidative stress, leading to an increase in the susceptibility to oxidant-induced susceptibility, *M. tuberculosis* and pulmonary injury, which were thought to occur as a part of TB diseases severity. The nuclear protein bound more strongly to the sequence with the C allele may be an activator of transcriptional activity. Although there is no putative enhancer element that contains the -129 position on the computer-based data research, there are several binding sites for nuclear proteins (that is, CCAAT binding protein, near the -129C/T polymorphic site). Thus, it is possible that the -129T allele might modify the binding of nuclear proteins to unidentified cis-elements around the -129 position, leading to suppression of GCLC gene expression.

In this study, the analysis of the genetic variation of GCLC genes as the indicator for the presence of oxidative stress in the pulmonary TB patients was also conducted. Moreover, the genetic variation plays a role in the severity of the pulmonary TB diseases, for example, the development of the pulmonary fibrosis as well as the pulmonary cancer. The genetic variation of GCL enzyme in pulmonary TB patients needs to be investigated to distinguish the difference of individual's genetic traits under the same conditions. The patients were infected by *M. tuberculosis* nevertheless, they gave different responses to acid-resistant bacteria changes after anti-TB drug therapy. Based on the results of this study supported with the result of study by [Li et al.²⁰](#), it was proven that GCLC gene polymorphism is a risk factor for susceptibility to oxidative stress and severity of pulmonary TB.

CONCLUSION

The frequency of C/T genotype in GCLC gene is 36.4%. This can be used as a basic knowledge for adding antioxidants (Vit C, Vit E, etc.) in the pulmonary TB treatment. The addition of antioxidants is useful to maintain the levels of antioxidants in the body and prevent the oxidative stress.

SIGNIFICANCE STATEMENT

This study discovers the existence of -129C/TGCLC as the GCLC gene polymorphism in pulmonary TB patients which indicates the low level of glutathione in their body. The result of this study can be beneficial for informing the medical personnel that the provision of antioxidant is needed in pulmonary TB treatment. This study will help the researchers to uncover the critical areas of pulmonary TB treatment from the molecular analysis that many researchers were not able to explore. Thus, a new theory on others supporting treatment for pulmonary TB patients, may be arrived at the pulmonary TB treatment.

ACKNOWLEDGMENT

A very special gratitude goes out to the Ministry of Research Technology and Higher Education for providing the funding for this study through the Fundamental Research via the Head of Institute for Research and Community Service Universitas Negeri Semarang. The grant number of funding is DIPA-023.04.2189822/2013, December 5, 2012.

REFERENCES

1. Venketaraman, V., Y.K. Dayaram, M.T. Talaue and N.D. Connell, 2005. Glutathione and nitrosoglutathione in macrophage defense against *Mycobacterium tuberculosis*. *Infect. Immunity*, 73: 1886-1889.
2. Venketaraman, V., T. Rodgers, R. Linares, N. Reilly and S. Swaminathan *et al.*, 2006. Glutathione and growth inhibition of *Mycobacterium tuberculosis* in healthy and HIV infected subjects. *AIDS Res. Therapy*, Vol. 3. 10.1186/1742-6405-3-5.
3. Connell, N.D. and V. Venketaraman, 2009. Control of *Mycobacterium tuberculosis* infection by glutathione. *Recent Patents Anti-Infective Drug Discov.*, 4: 214-226.
4. Rahman, I., 2005. Regulation of glutathione in inflammation and chronic lung diseases. *Mutat. Res./Fund. Mol. Mech. Mutagen.*, 579: 58-80.
5. Njalsson, R. and S. Norgren, 2005. Physiological and pathological aspects of GSH metabolism. *Acta Paediatr.*, 94: 132-137.
6. Siedlinski, M., D.S. Postma, C.C. van Diemen, A. Blokstra, H.A. Smit and H.M. Boezen, 2008. Lung function loss, smoking, vitamin C intake and polymorphisms of the glutamate-cysteine ligase genes. *Am. J. Respir. Crit. Care Med.*, 178: 13-19.
7. McKone, E.F., J. Shao, D.D. Frangolias, C.L. Keener and C.A. Shephard *et al.*, 2006. Variants in the glutamate-cysteine-ligase gene are associated with cystic fibrosis lung disease. *Am. J. Respir. Crit. Care Med.*, 174: 415-419.
8. Biolo, G., R. Antonione and M. de Cicco, 2007. Glutathione metabolism in sepsis. *Crit. Care Med.*, 35: S591-S595.
9. Heisterkamp, N., J. Groffen, D. Warburton and T.P. Sneddon, 2008. The human gamma-glutamyltransferase gene family. *Hum. Genet.*, 123: 321-332.
10. Jumraini, 2011. The relationship between BCL1 genetic polymorphism and promoter-148C/T β fibrinogen with fibrinogen plasma level of patients with acute ischemic stroke. Master Thesis, Hasanuddin University, Makassar.
11. Yang, P., W.R. Bamlet, J.O. Ebbert, W.R. Taylor and M. de Andrade, 2004. Glutathione pathway genes and lung cancer risk in young and old populations. *Carcinogenesis*, 25: 1935-1944.
12. Koide, S., K. Kugiyama, S. Sugiyama, S. Nakamura and H. Fukushima *et al.*, 2003. Association of polymorphism in glutamate-cysteine ligase catalytic subunit gene with coronary vasomotor dysfunction and myocardial infarction. *J. Am. Coll. Cardiol.*, 41: 539-545.
13. Custodio, H.M., K. Broberg, M. Wennberg, J.H. Jansson and B. Vessby *et al.*, 2004. Polymorphisms in glutathione-related genes affect methylmercury retention. *Arch. Environ. Health: Int. J.*, 59: 588-595.

14. Tan, K.S., K.O. Lee, K.C. Low, A.M. Gamage and Y. Liu *et al.*, 2012. Glutathione deficiency in type 2 diabetes impairs cytokine responses and control of intracellular bacteria. *J. Clin. Invest.*, 122: 2289-2300.
15. Nakamura, B.N., T.J. Fielder, Y.D. Hoang, J. Lim, L.A. McConnachie, T.J. Kavanagh and U. Luderer, 2011. Lack of maternal glutamate cysteine ligase modifier subunit (Gclm) decreases oocyte glutathione concentrations and disrupts preimplantation development in mice. *Endocrinology*, 152: 2806-2815.
16. Yuniastuti, A. and M. Dewi, 2012. Development of enzymatic biomarkers for the detection of oxidative stress due to the exposure of anti tuberculosis drugs to *Mycobacterium tuberculosis* infections. Institute for Research and Community Service Universitas Negeri Semarang, Semarang.
17. Sastroasmoro, S., 2010. Selection of Research Subjects. In: *Fundamentals of Clinical Research Methodology*, Sastroasmoro, S. (Ed.). 3rd Edn., SagungSeto, Jakarta, pp: 78-90.
18. Fatchiyah, L.A. Estri, W. Sri and R. Sri, 2011. *Molecular Biology: Basic Principles of Analysis*. Pnerbit Erlangga, Jakarta, Indonesia.
19. Dahlan, M.S., 2011. *Statistics for Medicine and Health: Descriptive, Bivariate and Multivariate Equipped Applications using SPSS*. Salemba Medika, Jakarta, Indonesia.
20. Liu, S., B. Li, Y. Zhou, N. Zhong and P Ran, 2007. Genetic analysis of CC16, OGG1 and GCLC polymorphisms and susceptibility to COPD. *Respirology*, 12: 29-33.

Polymorphism of Glutamate-Cysteine Ligase Subunit Catalytic (GCLC) Gene in Pulmonary Tuberculosis Patients

ORIGINALITY REPORT

21%

SIMILARITY INDEX

14%

INTERNET SOURCES

16%

PUBLICATIONS

5%

STUDENT PAPERS

PRIMARY SOURCES

1	ird.yahooapis.com Internet Source	1%
2	tsukuba.repo.nii.ac.jp Internet Source	1%
3	www.ijstr.org Internet Source	1%
4	Toto Sudargo, Indwiani Astuti, Eti Nuwening S, Rasita Amelia, Laila Maknunah, M. Risnhukath, Yosephin Anandati P. "The Effect of Kersen Juice on Lipid Profile of Spargue Dawley Rats: A Randomized Controlled Trial", Asian Journal of Clinical Nutrition, 2017 Publication	1%
5	Ming Zhu. "Molecular Mechanism(s) for UV-B Irradiation-Induced Glutathione Depletion in Cultured Human Keratinocytes", Photochemistry and Photobiology, 04/30/2007 Publication	1%
6	brightkite.com Internet Source	1%

7	Methods in Molecular Biology, 2010.	1%
Publication		
8	Polonikov, A.V.. "The relationship between polymorphisms in the glutamate cysteine ligase gene and asthma susceptibility", Respiratory Medicine, 200711	1%
Publication		
9	Oxidative Stress in Applied Basic Research and Clinical Practice, 2014.	1%
Publication		
10	core.ac.uk	1%
Internet Source		
11	mro.massey.ac.nz	1%
Internet Source		
12	Nichenametla, Sailendra N., Joshua E. Muscat, Jason G. Liao, Philip Lazarus, and John P. Richie. "A functional trinucleotide repeat polymorphism in the 5'-untranslated region of the glutathione biosynthetic gene GCLC is associated with increased risk for lung and aerodigestive tract cancers", Molecular Carcinogenesis, 2012.	1%
Publication		
13	Laura Ortiz, Brooke Nakamura, Xia Li, Bruce Blumberg, Ulrike Luderer. "In utero exposure to benzo[a]pyrene increases adiposity and causes hepatic steatosis in female mice, and glutathione deficiency is protective",	1%

Toxicology Letters, 2013

Publication

14 Claudia Pinto Marques Souza Oliveira. "Association of polymorphisms of glutamate-cystein ligase and microsomal triglyceride transfer protein genes in non-alcoholic fatty liver disease", Journal of Gastroenterology and Hepatology, 02/2010

Publication

1%

15 Submitted to University of Iowa

Student Paper

<1%

16 Submitted to University of Sheffield

Student Paper

<1%

17 www.jleukbio.org

Internet Source

<1%

18 Hugo E. Cuevas, Louis K. Prom. "Assessment of molecular diversity and population structure of the Ethiopian sorghum [*Sorghum bicolor* (L.) Moench] germplasm collection maintained by the USDA–ARS National Plant Germplasm System using SSR markers", Genetic Resources and Crop Evolution, 2013

Publication

<1%

19 wacci.edu.gh

Internet Source

<1%

20 Submitted to University of North Texas

Student Paper

<1%

21	www.sigmaaldrich.com Internet Source	<1 %
22	jarcm.tbzmed.ac.ir Internet Source	<1 %
23	Tommy Saing, Minette Lagman, Jeffery Castrillon, Eutiquio Gutierrez, Frederick T. Guilford, Vishwanath Venketaraman. "Analysis of glutathione levels in the brain tissue samples from HIV-1-positive individuals and subject with Alzheimer's disease and its implication in the pathophysiology of the disease process", BBA Clinical, 2016 Publication	<1 %
24	biosignaling.biomedcentral.com Internet Source	<1 %
25	www.thieme-connect.de Internet Source	<1 %
26	openscholarship.wustl.edu Internet Source	<1 %
27	publications.aston.ac.uk Internet Source	<1 %
28	www.unical.edu.ng Internet Source	<1 %
29	Y. K. Dayaram. "Characterization of a Glutathione Metabolic Mutant of Mycobacterium tuberculosis and Its Resistance to Glutathione and	<1 %

Nitrosoglutathione", Journal of Bacteriology,
02/15/2006

Publication

30

www.alamaya.net

Internet Source

<1 %

31

www.glutathioneexperts.com

Internet Source

<1 %

32

Sampath, Venkatesh, Jeffery S. Garland, Daniel Helbling, David Dimmock, Neil P. Mulrooney, Pippa M. Simpson, Jeffrey C. Murray, and John M. Dagle. "Anti-Oxidant Response Genes sequence variants and BPD susceptibility in VLBW infants", Pediatric Research, 2014.

Publication

<1 %

33

www.medsci.org

Internet Source

<1 %

34

Saijyothi, Aluru Venkata, Jenofar Fowjana, Subramanian Madhumathi, Mahadevan Rajeshwari, Maruthamuthu Thennarasu, Padmanaban Prema, and Narayanasamy Angayarkanni. "Tear fluid small molecular antioxidants profiling shows lowered glutathione in keratoconus", Experimental Eye Research, 2012.

Publication

<1 %

35

www.healingwithphyllis.com

Internet Source

<1 %

36	Owen W. Griffith. "The Enzymes of Glutathione Synthesis:γ-Glutamylcysteine Synthetase", Advances in Enzymology - and Related Areas of Molecular Biology, 01/01/1999 Publication	<1 %
37	pats.atsjournals.org Internet Source	<1 %
38	Akihiko Saitoh. "An MDR1-3435 variant is associated with higher plasma nelfinavir levels and more rapid virologic response in HIV-1 infected children", AIDS, 03/2005 Publication	<1 %
39	vetzoo.lsmuni.it Internet Source	<1 %
40	studentsrepo.um.edu.my Internet Source	<1 %
41	download.hjcz.org Internet Source	<1 %
42	Narciso Couto, Jennifer Wood, Jill Barber. "The role of glutathione reductase and related enzymes on cellular redox homoeostasis network", Free Radical Biology and Medicine, 2016 Publication	<1 %
43	www.genecards.org Internet Source	<1 %

44

Kim Quang Do. "Genetic dysregulation of glutathione synthesis predicts alteration of plasma thiol redox status in schizophrenia", *Antioxidants and Redox Signaling*, 08/2010

Publication

<1%

45

Langston, W.. "Insulin stimulation of @c-glutamylcysteine ligase catalytic subunit expression increases endothelial GSH during oxidative stress: Influence of low glucose", *Free Radical Biology and Medicine*, 20081201

Publication

<1%

Exclude quotes On

Exclude matches Off

Exclude bibliography On