

Investigating the Effect of Nanoclay Loadings and Re- Processing

by W Dyah P Rengga

Submission date: 30-Jun-2019 08:59PM (UTC+0700)

Submission ID: 1148078797

File name: 1_7_MSF.951.21.pdf (1.71M)

Word count: 2187

Character count: 11763

2

Investigating the Effect of Nanoclay Loadings and Re-Processing on the Melting and Crystallization Behavior of PP/Clay Nanocomposites

ACHMAD Chafidz^{1,a,*}, SHOLEH Ma'mun^{1,b,*}, HARYANTO^{2,c},
WARA Dyah Pita Rengga^{3,d},
PRIMA A. Handayani^{3,e} and LUCKY Setyaningsih^{1,f}

1

¹Chemical Engineering Department, Universitas Islam Indonesia, Yogyakarta 55584, Indonesia

²Chemical Engineering Department, Universitas Muhammadiyah Purwokerto, Purwokerto 53182, Indonesia

³Chemical Engineering Department, Universitas Negeri Semarang, Semarang 50229, Indonesia

^aachmad.chafidz@uii.ac.id, ^bsholeh.mamun@uii.ac.id, ^charyanto@um¹.ac.id,
^dwdpitar@mail.unnes.ac.id, ^eprima@mail.unnes.ac.id, ^flucky.nuzulia@uii.ac.id

Keywords: Polypropylene, nanoclay, nanocomposites, melt compounding, melting, crystallization

Abstract. In this study, PP/clay nanocomposites have been fabricated at different nanoclay loadings, i.e. 0, 5, 10, and 5 wt% for the 1st cycle and 2nd cycle (re-processing). The prepared nanocomposites were then characterized by a Differential Scanning Calorimetry (DSC) to investigate the effects of nanoclay loadings and re-processing on the melting and crystallization of the nanocomposites. The DSC results showed that the melting temperature, T_m , was not significantly affected by the nanoclay loadings and re-processing. In the other hand, the degree of crystallinity, X_c of the nanocomposites was higher than that of neat PP, but only reached a maximum at nanoclay loading of 5 wt% (i.e. 51.2% for NC-5-I and 48.3% for NC-5-II). Thereafter, the X_c decreased at higher nanoclay loadings. There was no significant difference in X_c between 1st cycle and 2nd cycle. Additionally, in all nanocomposites samples for both cycles, there were two crystallization temperatures, i.e. T_{c1} and T_{c2} . In the overall crystallization process, the T_c of nanocomposites increased by 11-12°C compared to that of neat PP. Whereas, the onset crystallization temperature, T_{oc} also increased by approx. 13°C. Apparently, there was no significant effect of nanoclay loadings and re-processing on the T_c and T_{oc} of the nanocomposites.

Introduction

Polymer nanocomposites (PNCs) have become an interesting topic of research for many researchers and have been intensively developed in the last two decades for many uses [1]. PNCs consist of polymeric materials as the matrix and nano-sized materials as the filler. Example of nanomaterials that have been widely used in the production of PNCs are layered silicates or nanoclay [2]; carbon nanotubes (CNTs) [2, 3]; and nano-silica, which correspond to the 1D-nanolayers, 2D-nanotubes, and 3D-nanoparticles, respectively. The 1D-nanolayers are the type of nanomaterials that only have one dimension that in nano-scale range, and therefore have a high aspect ratio (L/D), such as layered silicates or nanoclay [4, 5]. In recent years, nanoclay has attracted great interest among researchers in both academic and industry [6]. Additionally, nanoclay or layered is one of the most frequently used nanofillers for preparation of PNCs and approx. 70% of the market [5, 7].

Recently, nanomaterials-based masterbatch has been available in the market. Masterbatch is a polymer matrix filled with a high concentration of nanomaterials (typically 50-80wt%). The use of masterbatch is a promising method to fabricate polymer nanocomposites. It is because this method is simple (easy to process), no-dust since the nanomaterials are embedded inside the polymer matrix (less risk of health and safety), and less expensive. Additionally, using this method could increase the dispersion level as compared with the use of bulk nanomaterials. Moreover, this method also very compatible with the melt compounding method and thus most industrial processes, such as extrusion and injection molding [8]. In particular, polypropylene (PP)/clay nanocomposites is attractive due to their potential applications in the automotive industry, construction, etc. [9]. Based on the literature

4

review, there have been numerous research studies about PP/clay nanocomposites [1, 6, 9-11]. In our knowledge, the investigation about the effect of nanoclay loadings and re-processing effect on the melting and crystallization of the PP/clay nanocomposites prepared via melt compounding using masterbatch was still limited and therefore was considered as an attractive research topic.

Experimental

Materials and Fabrication of Nanocomposites. We have prepared PP/clay nanocomposites by melt compounding Polypropylene (PP) pellets and nanoclay-based masterbatch pellets in a twin-screw extruder. Injection molding grade PP pellets (PP570) were provided from SABIC, Saudi Arabia. Whereas, the nanoclay-based masterbatch with a weight ratio of nanoclay: PP matrix 50:50 (product name: NanoMax) was obtained from Nanacor, USA. The type of nanoclay material used was montmorillonite (MMT). The PP carrier is believed to be already compatibilized with maleic anhydride (MA). The method to prepare the nanocomposites was described in our previous work [8].

Nanocomposites Characterization. A Differential Scanning Calorimetry (DSC) was employed to investigate the effect of nanoclay loadings and re-processing on the thermal properties (i.e. melting and crystallization) of the PP/clay nanocomposites. The DSC analysis procedure for the PP/clay nanocomposites was already explained in our previous work [8].

Results and Discussion

Figure 1 shows the thermograms from the DSC heating scan of PP/clay nanocomposites for both 1st and 2nd cycles. As seen in the figure, the 1st cycle samples were presented by different colored symbols (o) and the 2nd cycle samples were presented by different colored dashed-lines. From the Fig. 2, some parameters could be derived, e.g. melting temperature (T_m), which was taken as the peak temperature of the DSC heating curve; degree of crystallinity (X_c), which was determined from the experimental heat of fusion ΔH_m and the literature value of 100% crystalline ΔH_m^0 (see our previous work [8]). These parameters are listed in Table 1. As seen in Fig. 1, all the nanocomposites samples for 2nd cycle were nicely overlapping with that of the 1st cycle, especially at higher nanoclay loadings (e.g. NC-10-I and NC-15-I). Moreover, the T_m of all nanocomposites samples were in the close range of temperature (i.e. 162-164°C) (see Table 1).

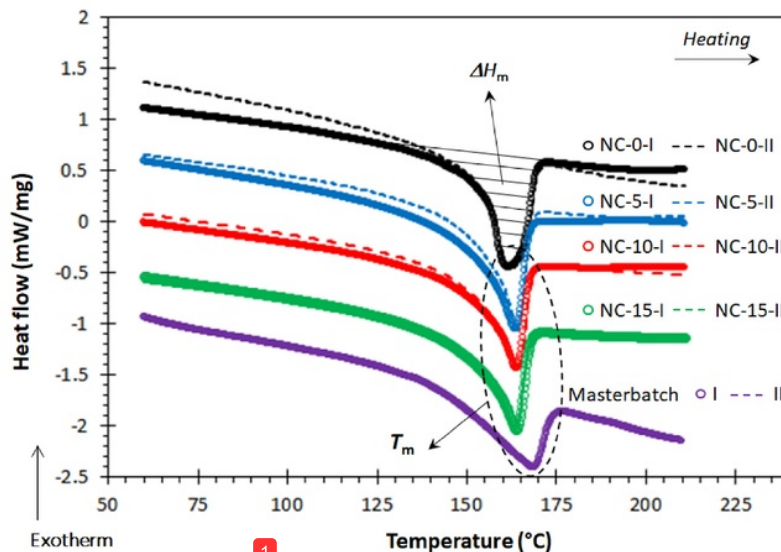


Fig. 1. DSC heating thermograms of PP/clay nanocomposites for 1st and 2nd cycles. The 1st cycle samples were presented by symbol (o) and the 2nd cycle samples were presented by dashed-lines

This indicates that the nanoclay loadings and re-processing **did not significantly affect the melting properties of the nanocomposites**. Additionally, the degree of crystallinity (X_c) of the nanocomposites was slightly higher than that of neat PP, which reached a maximum at nanocomposites samples with 5 wt% nanoclay loading (i.e. 51.2% for NC-5-I and 48.3% for NC-5-II). The increase of X_c could be related to the existence of nanoclay, which acted as nucleating agent and thus enhanced "heterogeneous" nucleation and crystallization process of the nanocomposites. Afterward, the X_c decreased at higher nanoclay loadings. This phenomenon could be related to the excessive existence of nanoclay, which could hinder the crystal growth of the nanocomposites. Since there are two opposing effects of nanoclay on the crystallization of the nanocomposites, i.e. heterogeneous nucleation and crystal growth inhibition [8].

Table 1. Representative storage modulus values (G') of the composites at several temperatures

PP/clay Nanocomposites	T_m [°C]	ΔH_m [J/g]	X_c [%]	T_{c1} [°C]	T_{c2} [°C]	T_{oc} [°C]
Sample	± 0.2 %	± 2 %	± 2 %	± 0.2 %	± 0.2 %	± 0.2 %
1 st cycle	NC-0-I	162	98	47.3	113	-
	NC-5-I	164	106	51.2	114	126
	NC-10-I	164	102	49.3	114	126
	NC-15-I	164	91	44.0	114	126
	Masterbatch-I	168	68	32.9	-	126
2 nd cycle	NC-0-II	162	96	46.4	113	-
	NC-5-II	164	100	48.3	115	126
	NC-10-II	164	93	44.9	115	126
	NC-15-II	164	87	42.0	115	126
	Masterbatch-II	168	68	32.9	-	126

Additionally, the DSC cooling thermograms of PP/clay nanocomposites for both 1st and 2nd cycles are presented in Fig. 2. As seen in the figure, the 1st cycle samples were presented by different colored symbols (o) and the 2nd cycle samples were presented by different colored dashed-lines. From this figure, several parameters could be derived, which are: crystallization temperature (T_c), which was taken as the peak temperature of the DSC cooling curve; and onset crystallization temperature (T_{oc}). These parameters are also listed in Table 1.

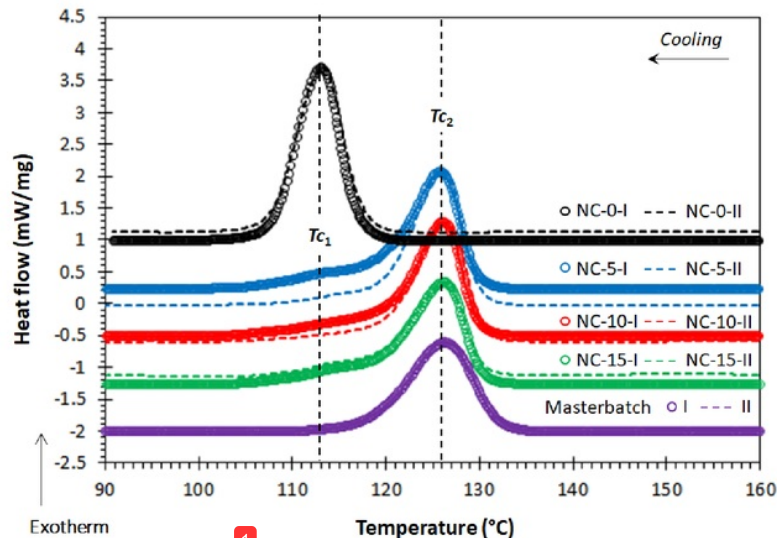


Fig. 2. DSC cooling thermograms of PP/clay nanocomposites for 1st and 2nd cycles. The 1st cycle samples were presented by symbol (o) and the 2nd cycle samples were presented by dashed-lines

As seen in Fig. 2, there were two crystallization peaks, i.e. T_{c1} and T_{c2} . The T_{c1} was associated with the “homogeneous” crystallization process of the neat PP. Whereas, T_{c2} was associated with the “heterogeneous” crystallization process, which promoted by the “heterogeneous” nucleation by the nanoclay materials. This was confirmed by comparing the T_c of the nanocomposites to that of PP and masterbatch. The T_{c1} was close to the T_c of neat PP, while, T_{c2} was close to the T_c of the masterbatch. This clearly indicates that the incorporation of nanoclay in the PP matrix has significantly increased the T_c as well as altered the crystallization mechanism/process of the nanocomposites by acting as a nucleating agent. Many literatures have reported the similar behavior of nanoclay [9-11]. Furthermore, the T_{oc} of the nanocomposites also shifted to a higher temperature (i.e. approx. 13°C) compared to the neat PP. Additionally, the percentage of heterogeneous and homogeneous in overall crystallization mechanism of the nanocomposites were determined by deconvoluting the two crystallization peaks of the nanocomposites using the “Peak Fit” commercial software (Stat Software Inc. USA). Figures 3a and 3b show the deconvolution result of nanocomposites sample, NC-5-I and NC-5-II, respectively. It is worth noting that the rest of the samples were not shown here.

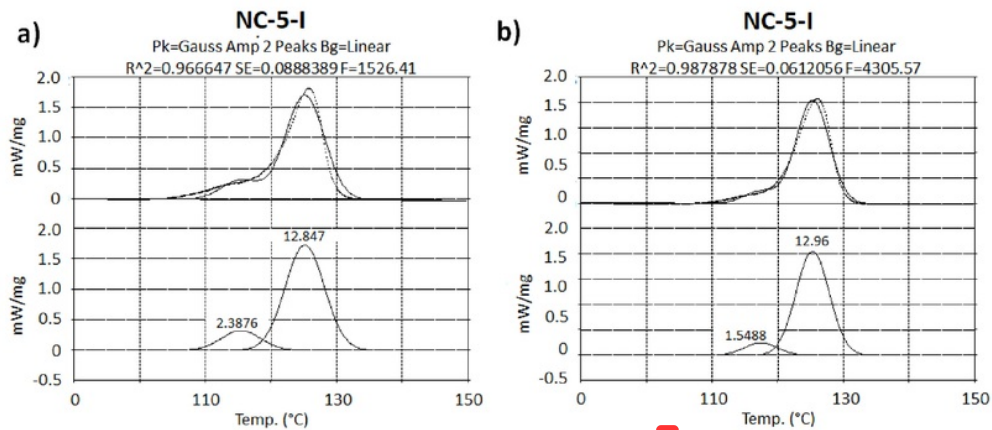


Fig. 3. Deconvolution result of crystallization peak of: a) NC-5-I and b) NC-5-II

Figure 4 shows the plot of these percentages. As seen in Fig. 4, the 2nd cycle of nanocomposites samples showed higher heterogeneous percentage compared to the 1st cycle. This can be explained that in the 2nd cycle, the nanoclay materials were better dispersed than in the 1st cycle, which was due re-processing effect. Therefore, the effect of heterogeneous nucleation also become better in 2nd cycle compared to the 1st cycle.

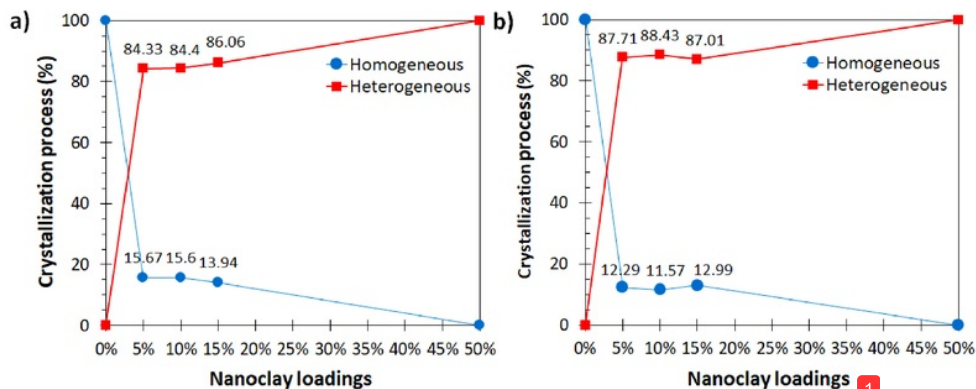


Fig. 4. The plot of the homogeneous and heterogeneous crystallization process of PP/clay nanocomposites samples, a) 1st cycle and b) 2nd cycle

Conclusion

The effects of nanoclay loadings and re-processing (i.e. 1st cycle and 2nd cycle) on the melting and crystallization of the nanocomposites have been investigated by using a Differential Scanning Calorimetry (DSC). The DSC results showed that the melting temperature T_m was not significantly affected by the nanoclay loadings and re-processing. In the other hand, the degree of crystallinity, X_c of the nanocomposites was higher than that of neat PP, but only reached a maximum at nanoclay loading of 5 wt% (i.e. 51.2% for NC-5-I and 48.3% for NC-5-II). Hereafter, the X_c decreased at higher nanoclay loadings. There was no significant difference in X_c between 1st cycle and 2nd cycle. Additionally, in all nanocomposites samples for both cycles, there were two crystallization temperatures, i.e. T_{c1} and T_{c2} . The T_{c1} was associated with the "homogeneous" crystallization process of the neat PP. Whereas, T_{c2} was associated with the "heterogeneous" crystallization process which promoted by the "heterogeneous" nucleation by the nanoclay materials. In the overall crystallization process, the T_c of nanocomposites increased by 11-12°C compared to that of neat PP. Whereas, the onset crystallization temperature, T_{oc} also increase by approx. 13°C. Apparently, there was no significant effect of nanoclay loadings and re-processing on the T_c and T_{oc} of the nanocomposites.

References

- [1] G. Zhang, T. Wu, W. Lin, Y. Tan, R. Chen, Z. Huang, X. Yin and J. Qu: *Compos. Sci. Technol.* Vol. 145 (2017), p. 157
- [2] M. Mirik, Ş. Ekinçi and M. Taşyürek: *International Journal of Materials, Mechanics And Manufacturing* Vol. 4 (2016), p. 247
- [3] A. Chafidz, F. H. Latief, A. S. Al-Fatesh and M. Kaavessina: *Philos. Mag. Lett.* Vol. 96 (2016), p. 367
- [4] A. P. Kumar, D. Depan, N. S. Tomer and R. P. Singh: *Prog. Polym. Sci.* Vol. 34 (2009), p. 479
- [5] K. Majeed, M. Jawaid, A. Hassan, A. A. Bakar, H. A. Khalil, A. Salema and I. Inuwa: *Mater. Design* Vol 46 (2013), p. 391
- [6] R. R. Hegde, J. E. Spruiell and G. S. Bhat: *Journal of Materials Research* Vol. 27 (2012), p. 1360
- [7] C. Silvestre, D. Duraccio and S. Cimmino: *Prog. Polym. Sci.* Vol. 36 (2011), p. 1766
- [8] A. Chafidz, M. A.-h. Ali and R. Elleithy: *J. Mater. Sci.* Vol. 46 (2011), p. 6075
- [9] P. Kodgire, R. Kalgaonkar, S. Hambir, N. Bulakh and J. Jog: *J. Appl. Polym. Sci.* Vol. 81 (2001), p. 1786
- [10] S. Lei, S. Hoa and M. Tonthat: *Compos. Sci. Technol.* Vol. 66 (2006), p. 1274
- [11] J. Ma, S. Zhang, Z. Qi., G. Li and Y. Hu: *J. Appl. Polym. Sci.* Vol. 83 (2002), p. 1978

Investigating the Effect of Nanoclay Loadings and Re-Processing

ORIGINALITY REPORT

19%

SIMILARITY INDEX

0%

INTERNET SOURCES

9%

PUBLICATIONS

20%

STUDENT PAPERS

PRIMARY SOURCES

1

Submitted to Universitas Islam Indonesia

Student Paper

12%

2

Samson Rwahwire, Wilson Babu Musinguzi. "Impact Resistance and Shore Hardness of Barkcloth Reinforced Epoxy Composites for Interior Automotive Panels", Materials Science Forum, 2019

Publication

4%

3

Submitted to Universitas Sebelas Maret

Student Paper

2%

4

Submitted to Yarmouk University

Student Paper

2%

Exclude quotes

Off

Exclude matches

< 2%

Exclude bibliography

On