

Kinetic Study on Catalytic Cracking of Rubber Seed (*Hevea brasiliensis*) Oil to Liquid Fuels

by Wara Dyah Pita Rengga

Submission date: 08-May-2018 11:26AM (UTC+0700)

Submission ID: 960626463

File name: BCrec.pdf (501.76K)

Word count: 6203

Character count: 30268



Research Article

Kinetic Study on Catalytic Cracking of Rubber Seed (*Hevea brasiliensis*) Oil to Liquid Fuels

Wara Dyah Pita Rengga^{1*}, Prima Astuti Handayani¹, Sri Kadarwati², Agung Feinnudin³

¹ Department of Chemical Engineering, Universitas Negeri Semarang, Kampus Sekaran Gunungpati, Semarang 50229, Indonesia

² Department of Chemical, Universitas Negeri Semarang, Kampus Sekaran Gunungpati, Semarang 50229, Indonesia

³ Education and Training Agency, Ministry of Energy and Mineral Resources of Republic Indonesia, Jl Poncol Raya No. 39 Ciracas, Jakarta 13740, Indonesia

Received: 3rd December 2013; Revised: 5th December 2014; Accepted: 7th December 2014

Abstract

Reaction kinetics of catalytic cracking of rubber seed oil to liquid fuels has been investigated. The reaction was performed with sulfuric acid as catalyst at temperatures of 350-450 °C and the ratio of oil-catalyst of 0-2 wt.% for 30-90 minutes. Kinetics was studied using the model of 6-lump parameters. The parameters were rubber seed oil, gasoline, kerosene, diesel, gas, and coke. Analysis of experimental data using regression models to obtain reaction rate constants. Activation energies and pre-exponential factors were then calculated based on the Arrhenius equation. The simulation result illustrated that the six-lump kinetic model can well predict the product yields of rubber seed oil catalytic cracking. The product has high selectivity for gasoline fraction as liquid fuel and the smallest amount of coke. The constant indicates that secondary reactions occurred in diesel products compared to gasoline and kerosene. The predicted results indicate that catalytic cracking of rubber seed oil had better be conducted at 450 °C for 90 minutes using 0.5 wt.% catalyst. © 2015 BCREC UNDIP. All rights reserved.

Keywords: Catalytic Cracking; Kinetics; Rubber Seed Oil; Liquid Fuel; six-lump

How to Cite: Rengga, W.D.P., Handayani, P.A., Kadarwati, S., Feinnudin, (2015). Kinetic Study on Catalytic Cracking of Rubber Seed (*Hevea brasiliensis*) Oil to Liquid Fuels. *Bulletin of Chemical Reaction Engineering & Catalysis*, 10 (1): 50-60. (doi:10.9767/bcrec.10.1.5852.50-60)

Permalink/DOI: <http://dx.doi.org/10.9767/bcrec.10.1.5852.50-60>

1. Introduction

In the future, demand for bio-fuels will rise due to the rise in the price of fossil fuel, energy security reasons and environmental issues. A growing trend towards employing modern tech-

nologies and efficient bio fuels conversion are becoming cost-wise competitive fossil fuels in developed countries [1]. Renewable energy technologies use the seed oils of plant to produce an attractive alternative fuel. Liquid fuels are primarily used to fuel transportation vehicle and applicable to fuel engines or fuel cells for electricity generation [2]. The seed oils are converted into liquid fuels due to their high energy density, liquid nature and availability as a non-edible renewable feedstock such as

* Corresponding Author

E-mail: wdpitar@email.unnes.ac.id;
pita.rengga@gmail.com (W.D.P. Rengga)
Tel: +62-24-8508101, Fax: +62-24-8508101

rubber seed oil (RSO).

The rubber seed production potential in Indonesia is about 120 kg/ha per annum. The productivity of RSO per hectare per annum is reported as 170 kg oil/ha. The estimated availability of rubber seed is about 280 kg seed/ha/year from 3 million hectare of rubber plantation. At present, RSO has found as natural production of seeds remain under utilized and any major application such as biodiesel (methyl ester) [3-4] and alkyl resins [5]. In order to obtain diversified product from RSO it is necessary to introduce and upgrade the process through catalytic cracking process.

Numerous catalytic cracking reactions have been used to convert palm oil [6-8], jatropha oil [9], cottonseed oil [10] into liquid fuels. The composition of palm oils, vegetable oils and cottonseed oils are different with RSO, mainly unsaturated fatty acid. The advantage of rubberseed is the content of unsaturated fatty acids are higher than these oils around 80-85 %. However, RSO as possible can be done [3] application of catalytic cracking process. A primary cracking is characterized by the formation of a fatty acid through the decomposition of triglyceride molecules which occurs through breaking of the ester bonds. The secondary cracking is characterized by the degradation of the acids produced in the first stage leading to the formation of hydrocarbons with properties similar to those of petroleum products.

Catalytic cracking process using a newly developed catalyst has enabled to produce high quality. The general catalysts which have been used to cracking process is solid catalyst such as silica sand [10] and zeolite [6,7,9,11]. However the use of solid heterogeneous catalyst may produce coke which caused fouling in catalyst pores and lead to deactivation of catalyst. The liquid homogeneous can cover the obstacle that can be performed in the use of solid heterogeneous catalyst. The phase is similar to the raw material which is favorable to the process of interface contact between catalyst and the oils. It is a homogeneous catalyst intrinsically more active and selective compared to heterogeneous catalyst [12].

It is necessary to conduct research on RSO catalytic cracking using sulfuric acid as a homogeneous catalyst to find out the potency of RSO producing liquid fuel. After reaction, sulfuric acid removal is necessarily conducted from the product by washing in water. The sulfuric acid is highly soluble in water. Some water is needed until the mixture has a pH of 7. Water settles to the bottom and then siphon off the liquid fuels (gasoline, kerosene, and diesel).

However the research is only studying the kinetic of catalytic cracking reaction of RSO to liquid fuels.

The study of kinetic reaction needs to be done to find out the kinetic parameter such as activation energy and pre-exponential factor. The most important aspects [1] catalytic cracking process are kinetic study. It should be done to model and simulate the reactor, predict the distribution of many products, design the process, and optimize the operational conditions for industrial application. The several kinetic models for catalytic cracking for production of liquid fuel were used as feedstock from naphtha [13], palm oil [14] mixture of palm oil and fatty-acid's palm oil [15] and gas oil [16]. RSO can be converted into liquid fuels through complex reactions that occur during the oil cracking which aims to break large molecules into smaller ones such as gasoline, kerosene, and diesel fraction, gas fraction, and coke.

The objective of the present investigation is to design a suitable kinetic model for RSO cracking using sulfuric acid catalyst for the production of liquid fuels (hydrocarbon). The reaction parameters of the proposed kinetic model are evaluated and experimental data obtained are compared with the calculated values obtained from the proposed model. Kinetic parameters were then estimated based on the regression method. After the estimation of the kinetic parameters, the variations of product yields were predicted using operating conditions.

2. Materials and Methods

2.1. Preparation of Rubber Seed Oils

Rubber seed (*Hevea brasiliensis*) originated from Perhutani PTP Nusantara IX Semarang, Indonesia, was composed predominantly of linoleic acid, which is C18:2 unsaturated fatty acid. RSO contains about 80% unsaturated fatty acids. Properties of RSO compared with the other rubber seed were given in Table 1. The raw rubber-seed oil was degummed using phosphoric acid 1% wt. oils. RSO was used for cracking study in the present investigation.

2.2. Catalytic Cracking Method

RSO was fed in a stainless steel reactor (110 mm height x 10 mm ID) (Figure 1). The reactor was used in catalytic cracking processes and equipped with a furnace and a thermocouple. A certain amount of sulfuric acid was used as the catalyst in catalytic cracking processes which was obtained from Merck. Reaction was performed at various temperatures which heated

externally at rate of 10 °C/min. Once the temperature was reached subsequently, the catalyst was introduced into the reactor by injection through a sample input hole. The catalyst 1.0% wt. was fed by liquid syringe-metering pump to add into RSO. The catalytic cracking process was done at different reaction times. The ranges of operating conditions for catalytic cracking of rubber seed are given in Table 2. The product gases were allowed to pass through a spiral condenser with flow of ice water. The weight of the gaseous products was estimated by weight of RSO be subtracted by weight of the residual oil, the liquid product, and the coke formed. The coke formed was separated by decanting the liquid products. The liquid products analyzed using GC-MS were

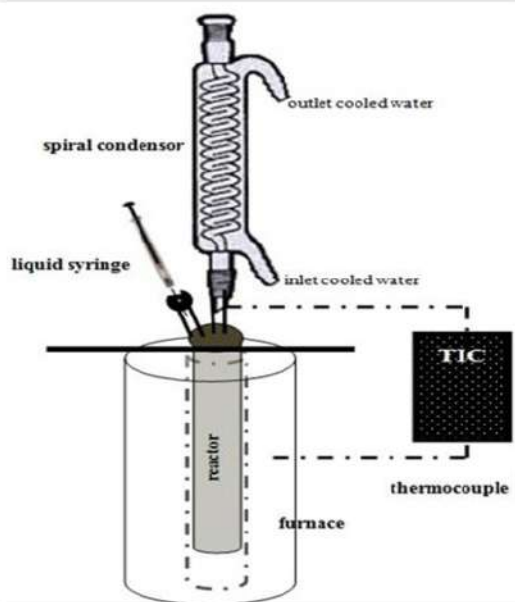


Figure 1. Catalytic cracking reactor

used for identifying the compounds in the liquid products. GC-MS with accuracy levels of 1/100 for liquid (gasoline, kerosene, and diesel) identification.

2.3. Product Analysis

The weight of residue which was not converted or phase that was not distilled is residual oil. Yield (X_p) in wt.% after the reaction is the weight of RSO subtracted by weight of residual oil (RO). These results compared with the weight of initial RSO are shown in Equation (1). The data of final volume measurement from obtained volume is shown in Table 3.

$$X_p(\text{wt. \%}) = \frac{RSO(g) - RO(g)}{RSO(g)} \times 100\% \quad (1)$$

Conversion of RSO with the addition of sulfuric acid catalyst into gaseous organics, liquid products (LP) and solid coke products was expressed respectively in units of wt.%. Product concentration (wt.%) for liquid products divided into gasoline, kerosene and diesel is shown in Equation (2).

$$LP(\text{wt. \%}) = \frac{\text{mass of product (g)}}{RSO \text{ feedstock (g)}} \times 100\% \quad (2)$$

Table 2. Operating conditions for catalytic cracking

Parameter	Value
Reaction temperature (°C)	350-450
Reaction time (minute)	30-90
Catalyst weight (wt.%)	0.0-2.0

Table 1. Properties of Rubber Seed Oil

Property	Rubber Seed Oil			
	[3]	[11]	[17]	This research
Fatty acid composition (%)				
- Palmitic acid (C16:0)	10.2	8.8	8.8	10.4
- Stearic Acid (C18:0)	8.7	7.7	6.2	8.3
- Oleic Acid (C18:1)	24.6	24	39.0	24.8
- Linoleic acid (C18:2)	39.6	36.1	42.1	40.0
- Linolenic acid (C18:3)	16.3	20.2	2.4	16.5
Specific gravity	0.91	0.93	0.93	0.92

GC-MS analyses providing data for quantification of compounds were divided into three classes: gasoline (C₁-C₉), kerosene (C₁₀-C₁₅), and diesel (C₁₆-C₂₄) based on the percentage of peak area on GC chromatogram. The weight of the gas products was estimated by weight of RSO subtracted by weight of the residual oil, the liquid product, and the coke formed. Solid product obtained after decanting the liquid products was assumed as coke.

The constants (*k*) are reaction rate constants of products such as: diesel, kerosene, gasoline, gas, and coke. They are temperature-dependent, calculated in accordance with the Arrhenius expression. Determination of the activation energy was performed using the Arrhenius Equation (Equation (3)) and calculating the activation energies (*E*) and frequency factor for (*A*) each reaction by plotting logarithmic reaction rate constant against reciprocal temperature. The activation energy was obtained from the slope of the plot, whereas the intercept was used to determine the pre-exponential factor.

$$k = A \exp\left(-\frac{E}{RT}\right) \quad (3)$$

2.4. Prediction of the 6-lump Kinetic Model

To validate the kinetic modeling, scatter diagram predicted and other new experimental data was utilized. *R*-squared (*R*²) is a statistical measure of how close the experimental data are to the fitted regression line. root-mean-square error (*RMSE*) is a frequently used measure of the differences between values predicted by a model or an estimator and the values actually observed. The sum of squares of error (*SSE*) and the total of sum of squares (*SST*) were used to define the *R*² and *RMSE* as equation (4-7), where *Y*_{exp} is yield from experimental data and *Y*_{model} is yield from model.

$$R^2 = 1 - \frac{SSE}{SST} \quad (4)$$

$$RMSE = \sqrt{SSE} \quad (5)$$

$$SSE = \sum_{i=1}^n (Y_{exp,i} - Y_{model,i})^2 \quad (6)$$

$$SST = \sum_{i=1}^n (Y_{exp,i} - \bar{Y}_{exp})^2 \quad (7)$$

3. Results and Discussion

Oil product from the cracking of RSO by sulfuric acid was mainly composed of n-paraffin, branched-chain and cyclic-chain paraffin, and aromatics (derivatives of benzene). Some products of rubber seed oils including gas, gasoline, kerosene, diesel, and coke.

3.1. Lumped Catalytic Cracking Reaction Model

The reaction network employed for the kinetic modeling of the liquid fuel RSO is presented in scheme of Figure 2. The lumps of cracking products were calculated based on the weight fraction.

This model requires 6 parameters to facilitate the data processing obtained from experiments. Using this model some simultaneously reaction occurrences in a set of experiments based on a 6-lump derivative model can be shown [6]. This model consists of a series of liquid products divided into three series, namely gasoline, kerosene, and diesel fraction. In each lump, it is assumed that the larger hydrocarbons will be cut down into smaller hydrocarbons. The parameter of kinetic reaction of 6-lump model was estimated in Equation (14-21).

$$R_{diesel} = k_{11} C_{oil} - k_5 C_{diesel} \quad (14)$$

$$R_{kerosene} = k_{12} C_{oil} + k_{51} C_{diesel} - k_6 C_{kerosene} \quad (15)$$

$$R_{gasoline} = k_{13} C_{oil} + k_{52} C_{diesel} + k_{61} C_{kerosene} - k_7 C_{gasoline} \quad (16)$$

$$R_{gas} = k_{21} C_{oil} + k_{53} C_{diesel} + k_{62} C_{kerosene} + k_{71} C_{gasoline} - k_4 C_{gas} \quad (17)$$

$$R_{coke} = k_{22} C_{oil} + k_{54} C_{diesel} + k_{63} C_{kerosene} + k_{72} C_{gasoline} + k_4 C_{gas} \quad (18)$$

$$k_5 = k_{51} + k_{52} + k_{53} + k_{54} \quad (19)$$

$$k_6 = k_{61} + k_{62} + k_{63} \quad (20)$$

$$k_7 = k_{71} + k_{72} \quad (21)$$

where *R*_{*i*} reaction rate of species *i*; *k*_{*i*} is reaction rate constant of species *i*; *k*_{*ij*} is reaction rate constant of species *i* into species *j*; and *C*_{*i*} is concentration of species *i*.

3.2. Effect of Temperature

In some cases, RSO was converted to gas phase, liquid phase, and coke at various temperatures and various times of catalytic cracking reaction at concentrations of catalyst 0.5 wt.%. Effect of reaction temperatures on the conversion of RSO with sulfuric acid catalyst was examined. The effect of temperature on the yield was studied by varying the temperature of 350-450 °C. Figure 3 shows the yield of product catalytic cracking with reaction time for 90 minutes by varying temperature. It has been observed that the yield of liquid and gaseous product is highly influenced by the increase in temperature. The optimum yield of cracking

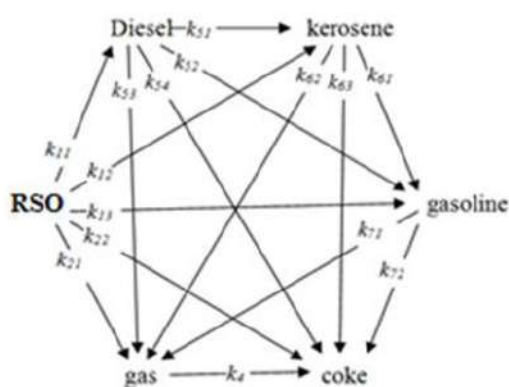


Figure 2. Model 6-lump catalytic cracking of rubber seed oils

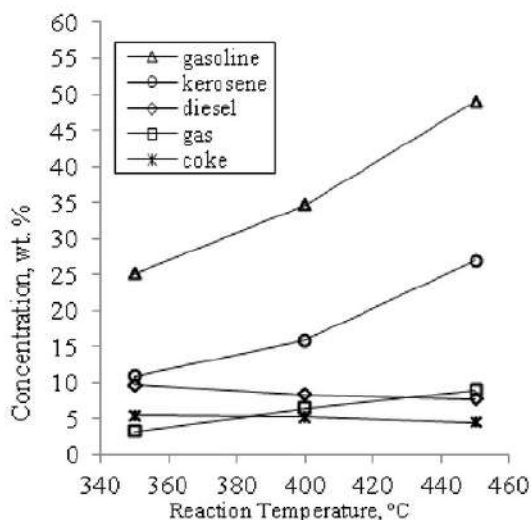


Figure 3. Variation temperature of reaction for 90 minutes using 0.5 wt.% catalyst

reaction of RSO to liquid product is 78 % at 450 °C (Table 3) using 0.5 wt.% sulfuric acid catalyst from total yield product 97 wt.%. The higher temperature (450 °C) accelerates the thermal decomposition and changes long-chain hydrocarbon molecules into middle/light hydrocarbon molecules by catalytic cracking. In other case, catalytic cracking using palm oil had an optimum yield as well with the same fraction product [6].

The concentration of each cracking reaction product at temperatures of 350-450 °C increased with increasing temperature. At catalyst concentration of 0.5 wt.% and reaction time of 30 minutes, the concentration of each reaction product decreased except the gas product. This might be caused by the amount of catalyst added to the reaction conditions which was not sufficient to catalyze the cracking reaction resulting in decrease in the conversion of each product. The gas product increased with increasing temperature due to the increase in free radical formation at elevated temperature without hydrogen due to the high molecular energy levels of the reactants. Cracking activity increased, occurred less randomly so that the generated gas product (light fractions) increased as well.

The results of catalytic cracking from RSO with sulfuric acid are the gasoline and kerosene fractions which increased with increasing reaction time. The coke formation seemed have a close relationship with the gasoline fraction, but not with the kerosene fraction. The secondary/continued cracking reactions occurred. It was observed that the most of the kerosene fraction from diesel fraction cracked. Deviation of reaction kinetics for diesel and gas fraction in fitting method were probably due to both are the products that are kinetically not stable, so that when equilibrium is reached, the fractions are not found in large numbers because of consumed and converted into more dominant products. The dominant products which are stable kinetically and thermodynamically were gasoline fractions with conversion of 48.3%. The similar result was obtained from palm oil with conversion of gasoline of 35% by using nanocrystalline zeolite [16].

The increase in gas product with increasing temperature may be due to the high cracking activity confirmed to the coke produced. The increasing temperature, the potential for coke became lower. The high cracking activity as a result of the high molecular energy was the dominant factor. The catalyst played fewer roles in declining the potential for coke formation. The

increasing concentration of the catalyst was not followed by a significant decrease in the amount of coke.

3.3. Effect of Reaction Time

Reaction time reflects the interaction between reactants and reactant-catalyst in the reaction system. The reaction time contributed mainly to the liquid yield was increased at 450 °C until 78%. Figure 4 shows the concentrations of RSO, diesel, kerosene, gasoline, gas and coke against the reaction time. Generally, it can be observed that the increase in reaction time resulted in the increasing concentrations of liquid products at catalyst concentration 0.5 wt.% and reaction temperature 450 °C with the highest gasoline concentration. This is because the longer the reaction time, the longer the interaction, and the greater probability for reaction. In these conditions, gasoline provided a high selectivity towards liquid product.

Gas product of lighter fractions as the consequences of advanced reaction seems occur. It can be observed from the decrease in the concentration of the gas product of light fractions with increasing reaction time, the possible reaction is the polymerization reaction (incorporation of light fractions to heavier fractions) and isomerization [16]. The effect of reaction time on the product distribution indicates that temperature was also a main factor affecting the conversion of long-chain hydrocarbon to middle-chain hydrocarbon, and continued cracking led to middle hydrocarbon goes to gas fraction [19], low-chain hydrocarbon and coke by increasing the reaction time.

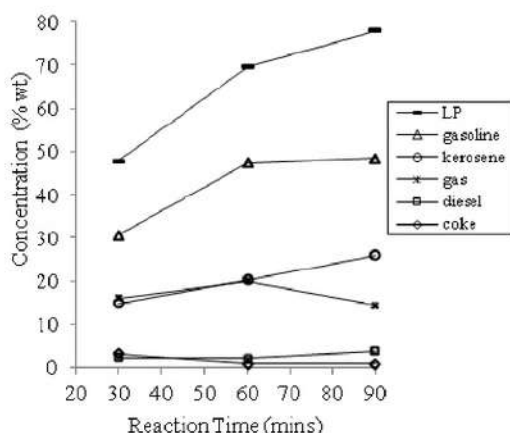


Figure 4. Variation of reaction time of catalytic cracking at 450 °C using 0.5% catalyst

3.4. Effect of Catalyst

The catalyst can accelerate the rate of reaction that leads to more dominant products in the equilibrium by lowering the activation energy. But the decline in activation energy should be significant enough to accommodate an increase in the rate of reaction, or be accompanied by a very significant increase in frequency factor. If the decrease in activation energy is not significant without a significant increase in frequency factor, the reaction rate will decrease. If the research of liquid fuel development based on natural oil is seriously engaged, the process with high efficiency and does not require a big expense need to be considered.

Figure 5 shows that the yield of the catalytic cracking at temperatures of 450 °C for variation of catalyst concentrations and reaction times. The catalytic cracking products can be found in the form of liquid fuel, gas, and coke products. The catalytic process for differences in reaction time of 30, 60, and 90 minutes can be seen clearly that the longer the product of liquid fuel, the reaction process of the higher product yields, especially a reaction time of 90 minutes to reach 78% yield. The use of a catalytic amount ranges from without catalyst up to 2.0 wt.% of liquid fuel is seen that the optimum concentration of catalyst 1.0 wt.% that the reaction time of 30 minutes with a yield of 61%. This is in contrast that liquid fuel products with the reaction time of 60 minutes and 90 minutes using 0.5 wt.% catalyst can achieve the highest yield of 72% and 78%, respectively. The highest yield of liquid fuels in the catalytic

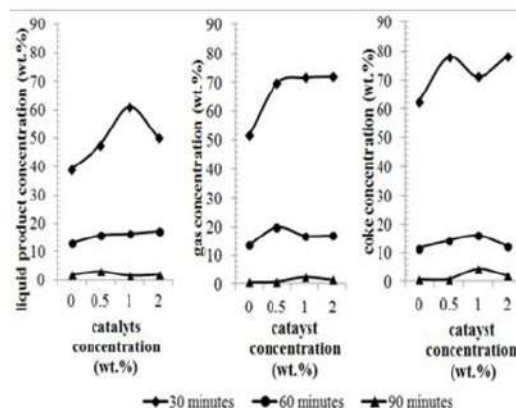


Figure 5. Concentrations of catalytic cracking products at reaction temperature 450 °C for different catalyst concentrations and reaction times

Table 3. Gaseous, liquid, and solid product of catalytic cracking of rubber seed oil

T (°C)	t (min)	Catalyst (wt.%)	Xp (wt.%)	LP (wt.%)	C gasoline (wt.%)	C kerosene (wt.%)	C diesel (wt.%)	C gas (wt.%)	C coke (wt.%)
350	30	0.0	11.6	5.3	3.2	1.5	0.5	0.4	0.5
350	30	0.5	14.8	11.9	7.3	3.9	0.7	1.1	1.8
350	30	1.0	45.8	37.4	19.8	8.2	9.4	2.9	2.8
350	30	2.0	34.6	26.6	9.4	10.5	6.6	2.5	5.3
350	60	0.0	17.9	15.4	8.3	2.8	4.3	0.6	1.9
350	60	0.5	35.7	24.7	13.6	4.0	7.1	1.6	2.2
350	60	1.0	51.0	43.1	22.9	9.5	10.7	5.6	4.6
350	60	2.0	67.1	53.6	22.3	9.5	21.8	2.0	5.9
350	90	0.0	34.4	30.4	20.4	8.4	1.5	1.5	2.5
350	90	0.5	65.8	52.1	35.0	13.9	3.2	2.9	3.7
350	90	1.0	56.7	46.7	25.9	10.8	10.0	3.2	5.4
350	90	2.0	74.7	53.5	29.4	17.4	6.7	6.2	7.7
400	30	0.0	68.0	55.2	30.5	14.5	3.5	4.6	2.0
400	30	0.5	82.7	67.7	40.1	20.8	6.8	6.8	5.1
400	30	1.0	65.8	53.2	31.2	13.0	9.0	9.0	2.1
400	30	2.0	58.8	45.6	25.6	13.9	6.1	6.9	6.8
400	60	0.0	46.5	39.5	24.9	10.6	4.0	5.9	1.0
400	60	0.5	65.7	52.0	31.5	13.0	7.4	7.6	2.9
400	60	1.0	69.0	60.1	35.2	15.1	9.7	8.5	4.2
400	60	2.0	74.0	58.6	33.7	16.3	8.7	8.1	4.0
400	90	0.0	49.5	43.6	27.4	14.1	2.1	4.3	1.6
400	90	0.5	78.7	59.4	35.7	18.3	5.4	7.9	2.9
400	90	1.0	78.0	58.7	34.0	15.8	8.9	6.4	5.2
400	90	2.0	82.9	67.3	37.8	22.3	7.2	6.9	4.8
450	30	0.0	54.1	39.2	24.5	12.4	2.2	13.0	1.8
450	30	0.5	71.7	47.7	30.6	14.8	2.2	16.0	3.0
450	30	1.0	89.1	61.1	42.3	17.2	1.7	16.6	1.5
450	30	2.0	77.3	50.2	33.7	14.6	1.9	17.5	1.9
450	60	0.0	65.7	51.5	34.9	16.0	0.6	13.6	0.6
450	60	0.5	97.0	69.6	46.4	20.3	2.0	19.9	0.8
450	60	1.0	91.7	71.6	44.4	21.4	5.8	16.9	2.4
450	60	2.0	94.7	72.0	44.6	23.5	3.8	16.9	1.4
450	90	0.0	74.6	62.4	39.5	20.4	2.4	11.5	0.7
450	90	0.5	96.6	78.0	48.3	25.9	3.7	14.4	0.8
450	90	1.0	97.9	71.2	43.8	22.7	4.7	16.3	4.5
450	90	2.0	97.9	78.0	45.3	24.6	8.3	12.3	2.1

T = temperature, t = time, C = concentration

cracking reaction temperature at 450 °C for 90 minutes using a catalyst of 0.5 wt.%.

Coke formation rate is a measure of the success of the process of production of liquid fuels. In Figure 3 as well, it can be shown that the coke produced were very low (0.8 wt.%) although with increasing catalyst concentration. At 450 °C and with a fairly low concentration of catalyst of 0.5%, coke produced reached its lowest point with a reaction time of 90 minutes. In these conditions gasoline fuel fractions also was produced at highest level. Thus, these conditions provide a high selectivity towards gasoline fraction. Effect of usage of catalyst is shown in Figure 6. Gasoline, a dominant product of liquid fuel has the same behavior with liquid fuels. The concentration of gasoline clearly higher for reaction time of 90 minutes than 60 minutes happened at reaction temperature of 450 °C. The use of catalysts 0.5 wt.% shows an increase of yield product of 20-25 % than reaction without catalyst. However, the use of 1.0 wt.% catalyst on catalytic cracking for 90 minutes shows a decrease yield after peak of yield on 0.5 wt.% catalyst usage.

Some fraction of liquid fuel produced, gasoline fraction always provided the greatest conversion compared to other fractions such as diesel, and kerosene products. In general it can notice that the concentration of gasoline produced as selective product is a function of temperature, catalyst concentration, and reaction time. However, for a reaction time of 90 minutes and a catalyst concentration of 0.5 wt.%, the trend of gasoline fraction increased with increasing temperature and time is the case. It was due to the limited amount of catalyst in the reaction system was not supported with adequate contact time between reactants.

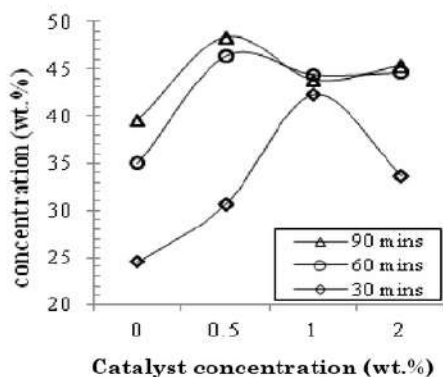


Figure 6. Gasoline concentration at reaction temperature of 450 °C

3.5. Kinetics Parameter Estimation

The reaction rate constants calculated by assuming that each of the single reaction is following the pseudo-first order kinetics. This paper presents the kinetic study of catalytic cracking of RSO catalyzed by homogeneous acid catalyst including the kinetic parameters for each of fuel products as well as activation energy for the reactions undergone. A better understanding about the mechanism of catalytic cracking of RSO will be reported separately.

Kinetic parameters are firstly estimated to detect the fitting capability of lumping models.

The reaction rate constants (k) were estimated by solving the system of differential equations (9-21) from model. It was determined by quasi-fitting method using f_{min} search program. The model equation is used to predict the yield of products. It is important to include the temperature effect on the kinetic parameters using the Arrhenius law. The k value each product is shown rate formation product. The formation of gasoline, kerosene, and gas is getting higher, while the formation of the diesel and coke decreases for long reaction times and high reaction temperatures. As seen in the Table 5, the

Table 4. Reaction rate constant of the 6-lump model

Reaction	Parameter	Reaction Rate Constant (min ⁻¹)		
		350 °C	400 °C	450 °C
oil→diesel	k_{11}	0.190	0.289	1.254
oil→ kerosene	k_{12}	0.074	0.110	0.634
oil→gasoline	k_{13}	0.098	0.115	0.956
diesel → kerosene	k_{51}	0.310	0.621	1.345
diesel → gasoline	k_{52}	0.026	0.081	0.143
diesel→gas	k_{53}	0.110	0.523	0.890
diesel→coke	k_{54}	0.039	0.082	0.385
kerosene → gasoline	k_{61}	-	-	-
kerosene→ gas	k_{62}	-	-	-
kerosene → coke	k_{63}	-	-	-
gasoline→ gas	k_{71}	-	-	-
gasoline → coke	k_{72}	0.0046	0.0110	0.2100

values of k gasoline are much higher than the other product. Therefore, the gasoline is produced more in the catalytic cracking than kerosene, gas, coke, and, diesel as obtained in the experimental results.

Determination of the activation energy was performed using the Arrhenius Law and calculating the pre-exponential factors and activation energies. Table 5 shows the activation energies and pre-exponential factors calculated for the reaction parameters. The activation energy is associated with the thermodynamic factors that require an adequate energy, while kinetically the measurement of the accuracy of orientation is reflected by the pre-exponential factor.

Over the temperature range, the average values of energy activation were estimated 100 kJ/moles for liquid fuels. The activation energy determined in this paper are close to those reported for catalytic cracking of waste lubricating oil and palm oil was 103.68 kJ/moles [19] and 132 kJ/moles [6]. Shortly, the catalytic cracking of RSO using sulfuric acid as catalyst is preferred thermodynamically due to the lower activation energy.

3.6. Prediction of Kinetic Model

In order to validate the kinetic modeling, diagram of predicted and new experimental data was utilized. R^2 can take any value between 0 and 1, with a value closer to 1 indicates a good fitness. The obtained results

Table 5. Pre-exponential factors and Activation energies

Parameter	Pre-exponential Factor, A	Activation Energy, E (kJ/mol)
k_{11}	1.06×10^5	69.46
k_{12}	3.42×10^5	80.94
k_{13}	6.36×10^5	82.79
k_{51}	1.21×10^4	54.92
k_{52}	2.28×10^3	58.97
k_{53}	5.38×10^5	79.09
k_{54}	3.97×10^5	84.30
k_{61}	1	-
k_{62}	1	-
k_{63}	1	-
k_{71}	1	-
k_{72}	2.09×10^9	140.91

demonstrate that kinetic model is in good agreement with experimental data. A significant test indicates that the observed R^2 is reliable, and is not a spurious result of oddities in the data set. The R^2 and RMSE of the test for components such as diesel, kerosene and gasoline are reported closer the value of R^2 to 1, the better agreement of experimental data and model prediction is implied.

Figure 7 shows predicted yield of variation in diesel, kerosene, and gasoline with reaction temperatures of 350-450, keeping the reaction time 90 minutes and ratio catalyst/oil at 1. The yields increased monotonously with increasing temperature, and that of diesel, kerosene and gasoline showed a maximum of 8.9 wt.%, 26.9 wt.%, and 49.0 wt.%, respectively. Maximum error as compared to experimental data for products used in the objective function is 9.4%. The model fits reasonably well with the experimental data were indicated to R^2 and RMSE. The observed R^2 is reliable with closer value of R^2 to 1, while RMSE are 1.001, 0.666, and 0.330 for gasoline, kerosene, and diesel, respectively. These results have better agreement of experimental data and model prediction.

The higher the reaction temperature, decreasing yield of diesel, followed with increasing yield of the kerosene and diesel. The kinetic rate constants showed that gasoline and kerosene fractions did not undergo secondary cracking reactions compared with the diesel fraction. The diesel tends to take part in secondary reactions.

Figure 8 shows the graph of experimental data versus estimated data of yield. The correlation of values between experimental data and

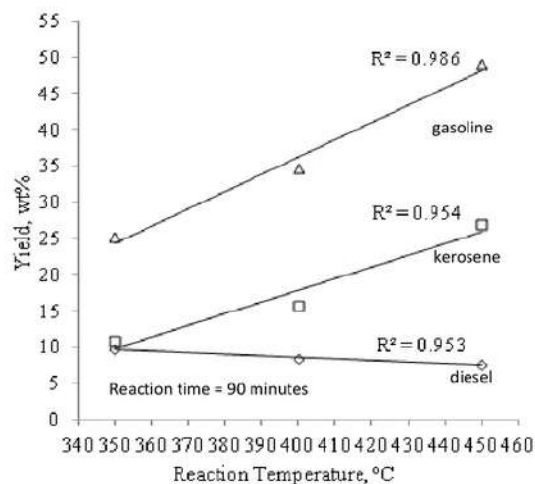


Figure 7. Predicted yields gasoline, kerosene, diesel as a function of reaction temperature

model were more suitable. Results indicate no meaningful difference in the predicted values though it is obvious that using 6-lumps will provide more details of the catalytic cracking reactions. Maximum error as compared to experimental data for products used in the objective function is 9.4%. In spite of limitation of experimental data for model, the model predictions for product yield describes very well the kinetic phenomena occurring on sulfuric acid catalyst in catalytic cracking of RSO.

4. Conclusions

Cracking reaction of RSO catalyzed by sulfuric acid achieved condition at temperature range of 350-450 °C with the concentration of sulfuric acid 0-2 wt.% and reactions time of 30-90 minutes This reaction was in accordance to the pseudo-order kinetics with the assumption the cracking reaction was the rate limiting step and used 6-lumps models. The advantage of this model was able to predict the main products of liquid fuel. The estimated kinetic parameters, as well as good agreement between model and experimental data were obtained. Concentration expressions of lumping species at the outlet of the reactor have been obtained. Reaction rate constants and model parameters have been estimated with the method and experimental data. Secondary reactions occurred in diesel products compared to gasoline and kerosene. The simulated results have shown that reaction time for 90 minutes, 450 °C and catalyst concentration 0.5 wt.% favored the pro-

duction of liquid fuels with a high selectivity for gasoline fraction and the lowest number of coke.

Acknowledgments

This work was financially supported by the Directorate General of Higher Education of the Republic of Indonesia for financial support under grant (Fundamental Research No. DIPA-023.04.2.189822/2013 and No. 2.14.5/PPK.3.1/2013. The authors would like to thank to Universitas Negeri Semarang have supported in this research.

References

- [1] Puhan, S., Vedaraman, N., Rambrahaman, B.V., Nagarajan, G. (2005). Mahua (Madhuca indica), Seed Oil: A Source of Renewable Energy in India. *Journal of Scientific and Industrial Research*, 64: 890-896.
- [2] Demirbas, A. (2007). Progress and Recent Trends in Bio-fuels. *Progress in Energy and Combustion Science*, 33(1):1-18.
- [3] Ramadhas, A.S., Muraleedharan, C., Jayaraj, S. (2005). Performance and Emission Evaluation of A Diesel Engine Fueled with Methyl Esters of Rubber Seed Oil. *Renewable Energy*, 30: 1789-1800.
- [4] Morshed, M., Ferdous, K., Khan, M.R., Mazumder, M.S.I., Islam, M.A., Uddin, M.D.T. (2011). Rubber Seed Oil as A Potential Source for Biodiesel Production in Bangladesh. *Fuel*, 90: 2981-2986.
- [5] Ikhuoria, E. U., Aigbodion, A. I., Okieimen F. E. (2004). Enhancing the Quality of Alkyd Resins using Methyl Esters of Rubber Seed Oil. *Tropical Journal of Pharmaceutical Research*, 3(1): 311-317.
- [6] Twaiq, F., Mohamed, A. R., Bhatia, S. (2004). Catalytic Cracking of Palm Oil into Liquid Fuels: Kinetic Study. In *Proceedings of The Seventh Asia-Pacific International Symposium on Combustion and Energy Utilization*, 1-8.
- [7] Taufiqurrahmi, N., Mohamed, A. R., Bhatia, S. (2011). Nanocrystalline Zeolite Beta and Zeolite Y as Catalysts in Used Palm Oil Cracking for The Production of Bio-fuel. *Journal of Nanoparticle Research*, 13: 3177-3189.
- [8] Charusiri, W., Yongchareon, W., Vitidsant, T. (2006). Conversion of Used Vegetable Oils to Liquid Fuels and Chemicals Over HZSM-5, Sulphated Zirconia, and Hybrid Catalysts. *Korean Journal of Chemical Engineering*, 23: 349-355.

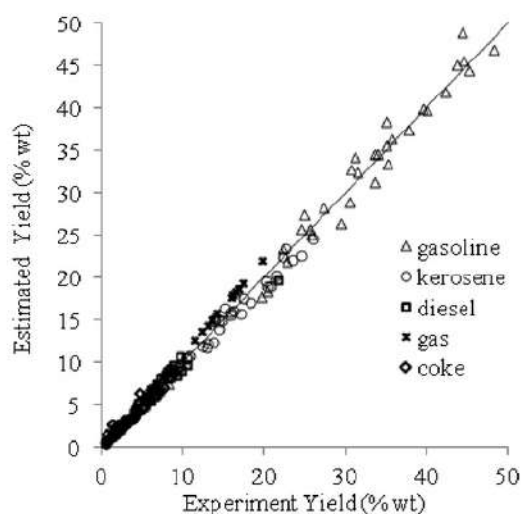


Figure 8. Comparison between experimental and estimated yield

- [9] Ramya, G., Sudhakar, R., Amala I.J.J, Ramakrishnan, R., Sivakumar, T., (2012). Liquid Hydrocarbon Fuels from Jatropha Oil through Catalytic Cracking Technology using AlMCM-41/ZSM-5 Composite Catalysts. *Applied Catalysis A: General* 433-434: 170-178.
- [10] Li, H., Shen, B., Kabalu, J.C., Nchare, M. (2009). Enhancing The Production of Bio-fuels from Cottonseed Oil by Fixed-Fluidised Bed Catalytic Cracking. *Renewable Energy*, 34: 1033-1039.
- [11] Li, L., Quan, K., Xu, J., Liu, F., Liu, S., Yu, S., Xie, C., Zhang, B., Ge, X. (2014). Liquid Hydrocarbon Fuels from Catalytic Cracking of Rubber Seed oil using USY as Catalyst. *Fuel*, 123: 189-193.
- [12] Cole-Hamilton, D.J. (2003). Homogeneous Catalysis--New Approaches to Catalyst Separation, Recovery, and Recycling. *Science*, 14(299): 1702-1706.
- [13] Sedighi, M., Keyvanloo, K., Towfighi, J. (2004). Kinetic Study of Steam Catalytic Cracking of Naphtha on A Fe/ZSM-5 Catalyst. *Energy & Fuel*, 18: 1555-1561.
- [14] Leng, Y.T., Mohamed, A.R, Bhatia, S. (1999). Catalytic Conversion of Palm Oil to Fuels and Chemicals. *The Canadian Journal of Chemical Engineering*, 77: 156-162.
- [15] Ooi, Y.S., Yakaria, R., Mohamed, A.R., Bhatia, S. (2004). Catalytic Conversion of Palm Oil-based Fatty Acid Mixture of Liquid Fuel. *Biomass and Energy*, 27: 477-484.
- [16] Ancheyta-JuaÁrez, J., LoÁpez-Isunza, F., Aguilar-RodrÁguez, E., (1999). 5-Lump kinetic model for gas oil catalytic cracking. *Applied Catalysis A: General*, 177: 227-235.
- [17] Kittigowittana, K., Wongsakul, S., Krisdaphong, P., Jimtaisong, A, Saewan, N. (2013). Fatty Acid Composition and Biological Activities of Seed Oil from Rubber (Hevea brasiliensis) Cultivar RRIM 600. *International Journal of Applied Research in Natural Products*. 6(2): 1-7.
- [18] de Klerk, A. (2007). Thermal Cracking of Fischer-Tropsch Waxes. *Industrial & Engineering Chemical Research*, 46: 5516-5521.
- [19] Permsubscul, A., Vitidsant, T., Damronglerd, S. (2007). Catalytic Cracking Reaction of Used Lubricating Oil to Liquid Fuels Catalyzed by Sulfated Zirconia. *Korean Journal of Chemical Engineering*, 24(1): 37-43.

Kinetic Study on Catalytic Cracking of Rubber Seed (*Hevea brasiliensis*) Oil to Liquid Fuels

ORIGINALITY REPORT

9%

SIMILARITY INDEX

1%

INTERNET SOURCES

8%

PUBLICATIONS

1%

STUDENT PAPERS

PRIMARY SOURCES

1 Mehdi Sedighi, Kamyar Keyvanloo, Jafar Towfighi. "Kinetic study of steam catalytic cracking of naphtha on a Fe/ZSM-5 catalyst", *Fuel*, 2013 **5%**
Publication

2 Jon Alvarez, Gartzzen Lopez, Mainer Amutio, Javier Bilbao, Martin Olazar. "Physical Activation of Rice Husk Pyrolysis Char for the Production of High Surface Area Activated Carbons", *Industrial & Engineering Chemistry Research*, 2015 **1%**
Publication

3 Prado, C.M.R.. "Production and characterization of the biofuels obtained by thermal cracking and thermal catalytic cracking of vegetable oils", *Journal of Analytical and Applied Pyrolysis*, 200911 **1%**
Publication

4 ejournal2.undip.ac.id **1%**
Internet Source

5 José Roberto Hernández-Barajas, Richart Vázquez-Román, Ma.G. Félix-Flores. "A comprehensive estimation of kinetic parameters in lumped catalytic cracking reaction models", Fuel, 2009 1%

Publication

6 atrium.lib.uoguelph.ca 1%

Internet Source

7 Taufiqurrahmi, Niken, and Subhash Bhatia. "Catalytic cracking of edible and non-edible oils for the production of biofuels", Energy & Environmental Science, 2011. 1%

Publication

Exclude quotes On
Exclude bibliography On

Exclude matches < 1%